

SHINWA EXPRESS

Information

2019
April

VOL. A17

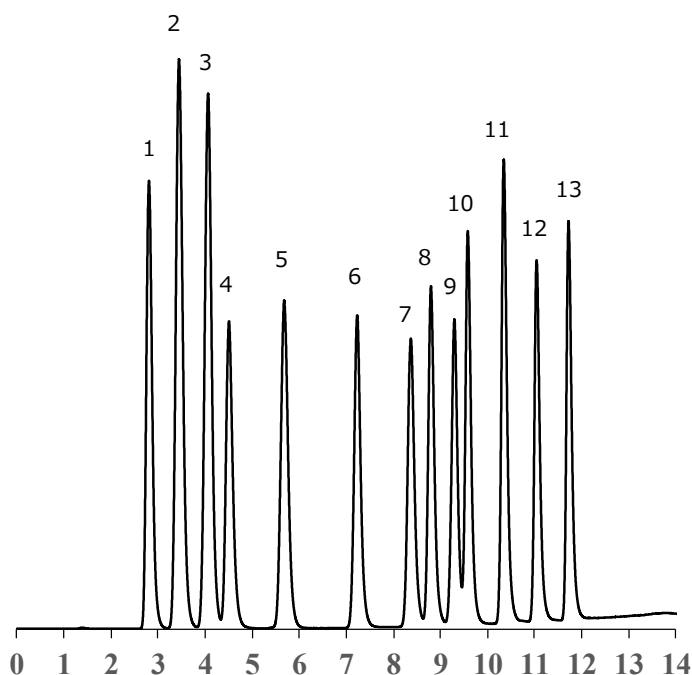
亲水相互作用色谱柱

NEW

ULTRON AF-HILIC-CD (HT)

AF-HILIC-CD (HT)是, 在原有产品ULTRON AF-HILIC系列色谱柱基础上, 采用粒径 $2\mu\text{m}$ 填料填充的HILIC色谱柱。可以对结构类似物和结构异构体进行快速高分离的分析。

同时分析单糖, 二糖和低聚糖



- | | |
|--------------|---------------------|
| 1. Xylose | 8. Lactose |
| 2. Fructose | 9. Trehalose |
| 3. Glucose | 10. Xylotriose |
| 4. Mannitol | 11. 1-Kestose (GF2) |
| 5. Xylobiose | 12. Raffinose |
| 6. Sucrose | 13. Nystose (GF3) |
| 7. Lactulose | |

Gradient : 10 minutes gradient, 88% - 65%
with 20minutes re-equilibration

Time (min)	Profile %A	Profile %B
0.00	96	4
10.00	58	42
10.01	96	4
30.00	96	4

Column: ULTRON AF-HILIC-CD (HT) ($2\mu\text{m}$)
 Column size: 100 mm x 2.0 mm I.D.
 Mobile phase: A 20 mM $\text{CH}_3\text{CO}_2\text{NH}_4$ (pH 6.8) / CH_3CN = 10/90 (v/v)
 B 20 mM $\text{CH}_3\text{CO}_2\text{NH}_4$ (pH 6.8) / CH_3CN = 70/30 (v/v)

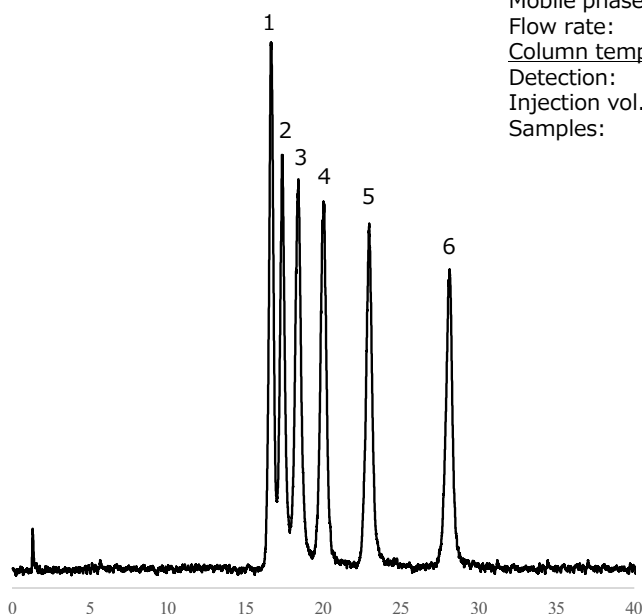
Flow rate: 0.26 mL/min
 Column temp.: 40°C
 Detection: ELSD
 Injection vol.: 2.5 μL



信和化工株式会社

〒612-8307 京都市伏見区景勝町50番地2
 TEL: 075-621-2360 FAX: 075-602-2660
 E-mail: info@shinwa-cpc.co.jp
 URL: http://shinwa-cpc.co.jp/

分离糖异构体



Column: ULTRON AF-HILIC-CD (HT) (2 μ m)
 Column size: 150 mm x 2.0 mm I.D.
 Mobile phase: 100 mM CH₃CO₂NH₄ (pH 6.8)/CH₃CN = 10/90 (v/v)
 Flow rate: 0.45 mL/min
 Column temp.: 40°C
 Detection: ELSD
 Injection vol.: 1.0 μ L
 Samples:
 1. Turanose (Glucose - Fructose α (1 \rightarrow 3))
 2. Palatinose (Glucose - Fructose α (1 \rightarrow 6))
 3. Maltulose (Glucose - Fructose α (1 \rightarrow 4))
 4. Maltose (Glucose - Glucose α (1 \rightarrow 4))
 5. Lactose (Galactose - Glucose β (1 \rightarrow 4))
 6. Trehalose (Glucose - Glucose α (1 \rightarrow 1))

ULTRON AF-HILIC-CD系列

产品名称	粒径 (μ m)	柱尺寸 (mm)
ULTRON AF-HILIC-CD (HT)	2	50 x 2.0
		100 x 2.0
		150 x 2.0
ULTRON AF-HILIC-CD	5	100 x 2.0
		100 x 4.6
		150 x 2.0
		150 x 4.6
		250 x 4.6

※ 如需更多尺寸色谱柱, 请与我们联系。

本公司秉承不断改良产品之宗旨, 如产品规格有变动, 恕不另行通知。