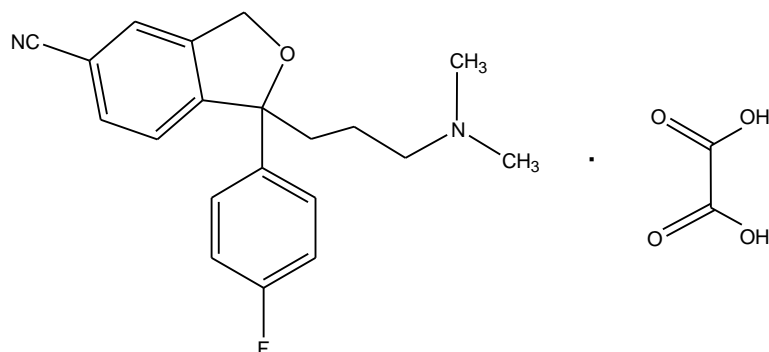
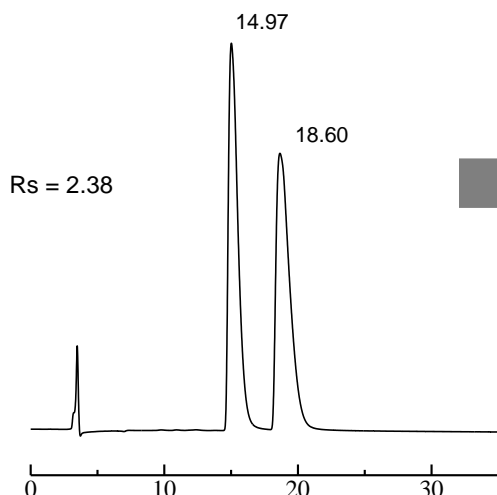


Analysis of escitalopram oxalate using the ULTRON ES-OVM (3 μ m)

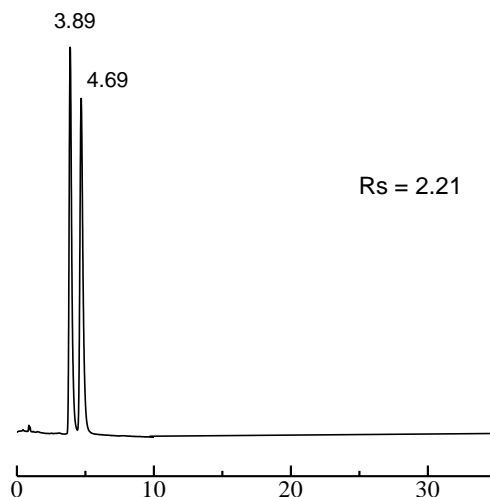
Shown below are comparative analyses of escitalopram oxalate performed using ULTRON ES-OVM 5 μ m (150 x 4.6 mm I.D.) and ULTRON ES-OVM 3 μ m (100 x 3.0 mm I.D.) columns.



① ULTRON ES-OVM (5 μ m)
150 x 4.6 mm I.D.



② ULTRON ES-OVM (3 μ m)
100 x 3.0 mm I.D.



*Resolution values will differ depending on the specifications of the system used.

Column: ULTRON ES-OVM (5 μ m)/ULTRON ES-OVM (3 μ m)
 Column size: 150 x 4.6 mm I.D./100 x 3.0 mm I.D.
 Column temp.: 30°C
 Mobile phase: 50 mM KH₂PO₄ + 0.2 N NaOH (pH 7.0)/CH₃CN = 85/15
 Flow rate: 0.6 mL/min

Detection: UV-240 nm
 Sample: 125 mg/L (in mobile phase)
 Injection vol.: 15.0 μ L (ES-OVM, 5 μ m 150 x 4.6 mm I.D.)
 0.5 μ L (ES-OVM, 3 μ m 100 x 3.0 mm I.D.)



SHINWA CHEMICAL INDUSTRIES LTD.

50-2 Kagekatsu-cho, Fushimi-ku
 Kyoto 612-8307 Japan
 TEL: +81-75-621-2360 FAX: +81-75-602-2660
 E-mail: info@shinwa-cpc.co.jp
 Website: <http://shinwa-cpc.co.jp/en/>

Features of the ULTRON ES-OVM (3 μ m) (compared to the 5 μ m column)

- Employs a 3 μ m packing material for higher peak resolution and theoretical plate numbers.
- Enables significant reductions in analysis times while maintaining high theoretical plate numbers.
- Maximum operating pressure of 30 MPa.
- Can be used in LC/MS systems as well.
- Enables further improvements in performance with optimization of LC system tubing and flow cells.
- 9 column length and inner diameter combinations available.

ULTRON ES-OVM (3 μ m) line-up

Application	Semi-micro LC	Semi-micro LC Conventional LC	Conventional LC
Column dimensions Length \times I.D. (mm)	50 \times 2.1	50 \times 3.0	50 \times 4.6
	100 \times 2.1	100 \times 3.0	100 \times 4.6
	150 \times 2.1	150 \times 3.0	150 \times 4.6



Please feel free to contact us with questions related to analyses.
Column screening services are also available.

Please be aware that specifications are subject to change without prior notification.