

SHINWA EXPRESS

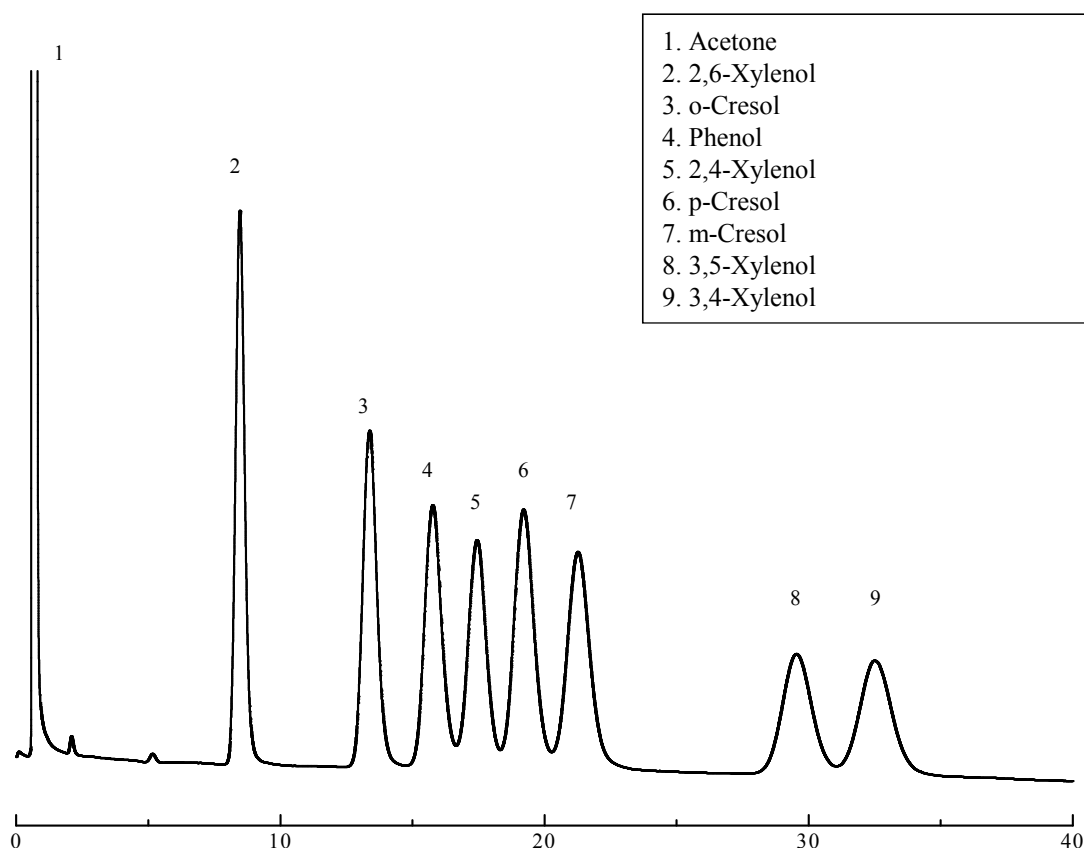
*Application*2013
September

VOL. 14

Measurements of cresol and xylene isomers using Shinwasorb

Cresols are used in a wide range of applications as intermediates in the manufacture of solvents and disinfectants. They are also commonly used in the manufacture of flavors and fragrances, antioxidants, dyes, pesticides, and plastics and resins. Shown below is an example of an analysis of cresol and xylene isomers using a cresol isomer/alkylphenol analytical column packed with a Shinwasorb packing material (stationary phase: FAP-S), and performed in accordance with Japan's Food Sanitation Law.

FAP-S Shinwasorb-U 60/80



Column: 3.1 m x 3.2 mm I.D. Glass
Carrier gas: 50 ml/min N₂
Injection port temp.: 250°C

Sample volume: 1 µL
Column temp.: 160°C
Detector: FID 250°C

**SHINWA CHEMICAL INDUSTRIES LTD.**

50-2 Kagekatsu-cho, Fushimi-ku
Kyoto 612-8307 Japan
TEL: +81-75-621-2360 FAX: +81-75-602-2660
E-mail: info@shinwa-cpc.co.jp
Website: <http://shinwa-cpc.co.jp/en/>

■ Packing material specifications and price ■

Product name	Weight	Price
FAP-S Shinwasorb-U 60/80	25 g	22,300 JPY

■ Packed column specifications and price ■

Product name	Column material	Dimensions	Price
FAP-S Shinwasorb-U 60/80	Glass	3.1 m x 3.2 mm I.D.	52,000 JPY

Prices for glass columns for Shimadzu systems other than GC-14A, GC-14B, and GC-2014, and systems manufactured by other manufacturers will differ from those shown above.

The prices shown above are accurate as of October 17th, 2013. Please contact us for pricing.

Feel free to contact us if you have particular analytical conditions you would like to use or if you have any questions related to analyses.



Please be aware that specifications and prices are subject to change without prior notification due to the implementation of improvements.