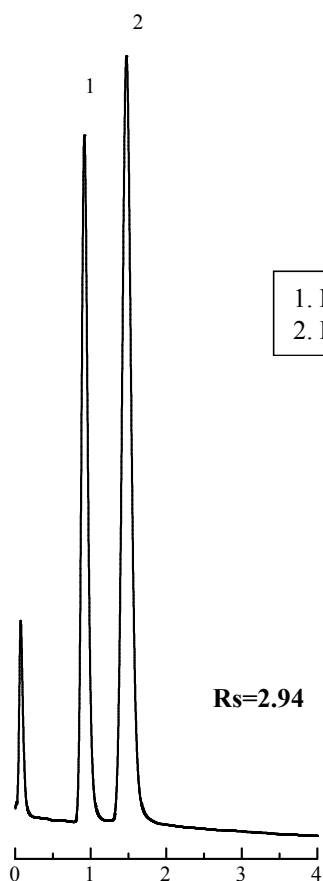


Measurement of alkyl mercury compounds using Shinwasorb

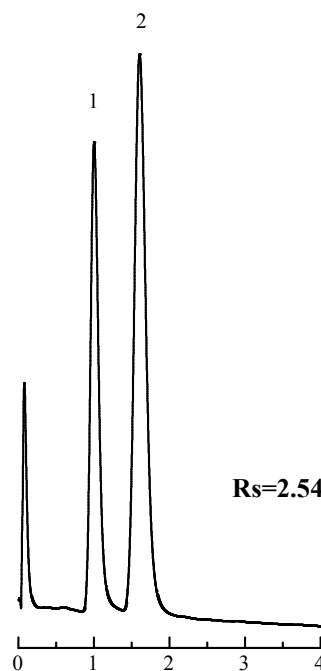
The majority of organic mercury found in the environment exists in the forms of methyl and ethylmercury. Of these two compounds, methylmercury, which builds up in the environment and is difficult to break down, is the most dangerous. Residual levels of these compounds are determined through chlorination of these compounds followed by detection using ECDs (electron capture detectors). Shown below is an example of an analysis of methyl and ethylmercury using a column packed with a Shinwasorb packing material, and performed in accordance with Japan's "Testing methods for industrial wastewater" (JIS-K0102).

5% Thermon-HG Shinwasorb-U 60/80



10% Thermon-HG Chromosorb W 80/100 AW-DMCS

1. Methyl mercuric chloride
2. Ethyl mercuric chloride



Column: 0.5 m x 3.0 mm I.D. Glass
Sample: Each 100 ppb in n-hexane
Carrier gas: 50 mL/min N₂
Injection port temp.: 250°C

Sample volume: 1 µL
Column temp.: 160°C
Detector: ECD 250°C



SHINWA CHEMICAL INDUSTRIES LTD.

50-2 Kagekatsu-cho, Fushimi-ku
Kyoto 612-8307 Japan
TEL: +81-75-621-2360 FAX: +81-75-602-2660
E-mail: info@shinwa-cpc.co.jp
Website: <http://shinwa-cpc.co.jp/en/>

■ Packing material specifications and price ■

Product name	Weight	Price
5% Thermon-HG Shinwasorb-U 60/80	25 g	30,300 JPY

■ Packed column specifications and price ■

Product name	Column material	Dimensions	Price
5% Thermon-HG Shinwasorb-U 60/80 with data	Glass	0.5 m x 3.0 mm I.D.	60,200 JPY

Prices for glass columns for Shimadzu systems other than the GC-2014, and systems manufactured by other manufacturers will differ from that shown above. The prices shown above are accurate as of December 9th, 2013. Please contact us for pricing.



Please feel free to contact us with questions related to analyses.

Please be aware that specifications and prices are subject to change without prior notification.