

# SHINWA EXPRESS

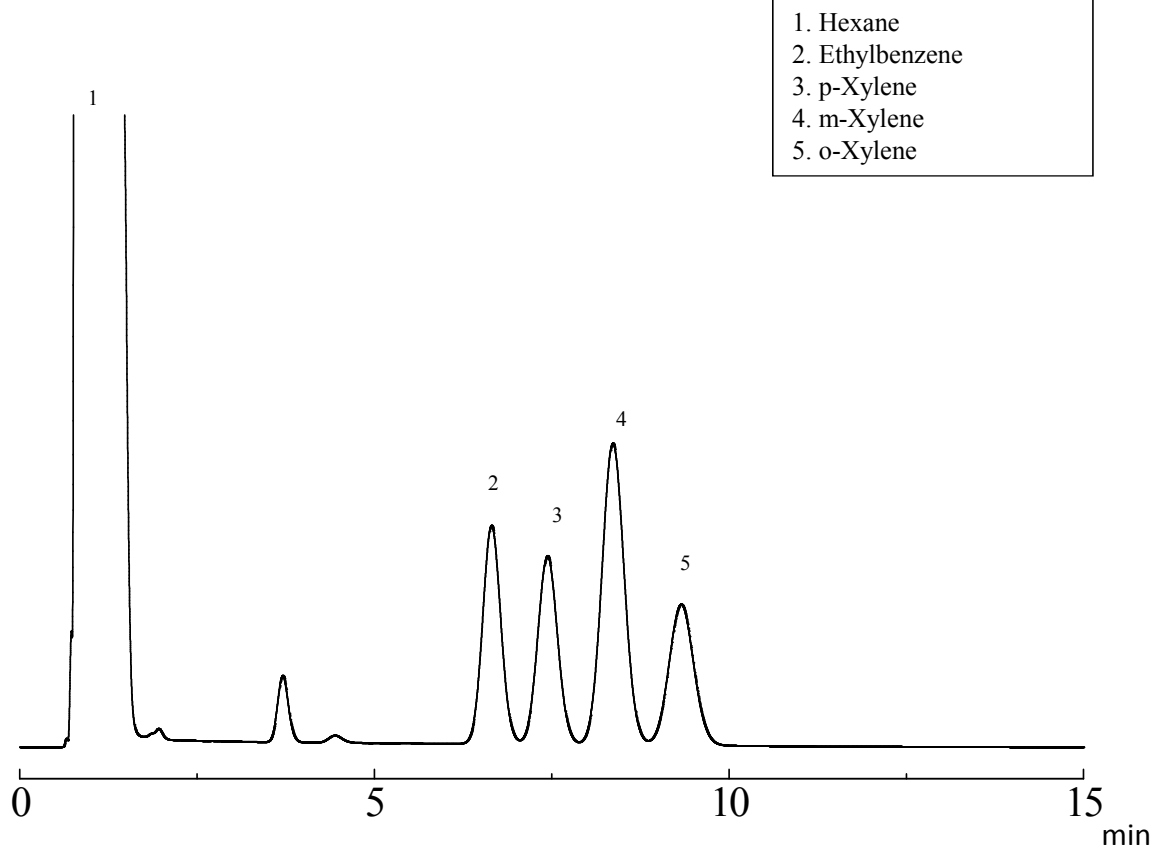
*Application*2014  
January

VOL. 20

## Measurement of xylene isomers using Shinwasorb

Xylene is separated into its isomers, which are then used as starting materials in synthetic processes. As the four isomers (ethylbenzene, m-xylene, o-xylene, and p-xylene) contained in xylene have the same molecular weight and similar boiling points, separations and quantifications of trace isomers contained in highly purified xylene isomers are regarded as being difficult. Shown below is an example of an analysis of the isomers of xylene using a column packed with a Shinwasorb packing material.

Shinchrom F51 + Bentone 34 3 + 2% Shinwasorb-U 60/80



Column: 2.1 m x 3.2 mm I.D. Glass  
Sample: 100 ppm in hexane  
Carrier gas: 40 ml/min N<sub>2</sub>  
Injection port temp.: 240°C

Sample volume: 1.0 µL  
Column temp.: 80°C  
Detector: FID 240°C

**SHINWA CHEMICAL INDUSTRIES LTD.**

50-2 Kagekatsu-cho, Fushimi-ku  
Kyoto 612-8307 Japan  
TEL: +81-75-621-2360 FAX: +81-75-602-2660  
E-mail: [info@shinwa-cpc.co.jp](mailto:info@shinwa-cpc.co.jp)  
Website: <http://shinwa-cpc.co.jp/en/>

■ Packing material specifications and price ■

Product name	Weight	Price
Shinchrom F51 + Bentone 34 3 + 2% Shinwasorb-U 60/80	25 g	22,100 JPY

■ Packed column specifications and price ■

Product name	Column material	Dimensions	Price
Shinchrom F51 + Bentone 34 3 + 2% Shinwasorb-U 60/80	Glass (For GC-2014 systems)	2.1 m x 3.2 mm I.D.	61,700 JPY (Includes test data)

Prices for glass columns for Shimadzu systems other than the GC-2014, and systems manufactured by other manufacturers will differ from that shown above. The prices shown above are accurate as of January 28th, 2014. Please contact us for pricing.

Please be aware that specifications and prices are subject to change without prior notification.