

SHINWA EXPRESS

Application

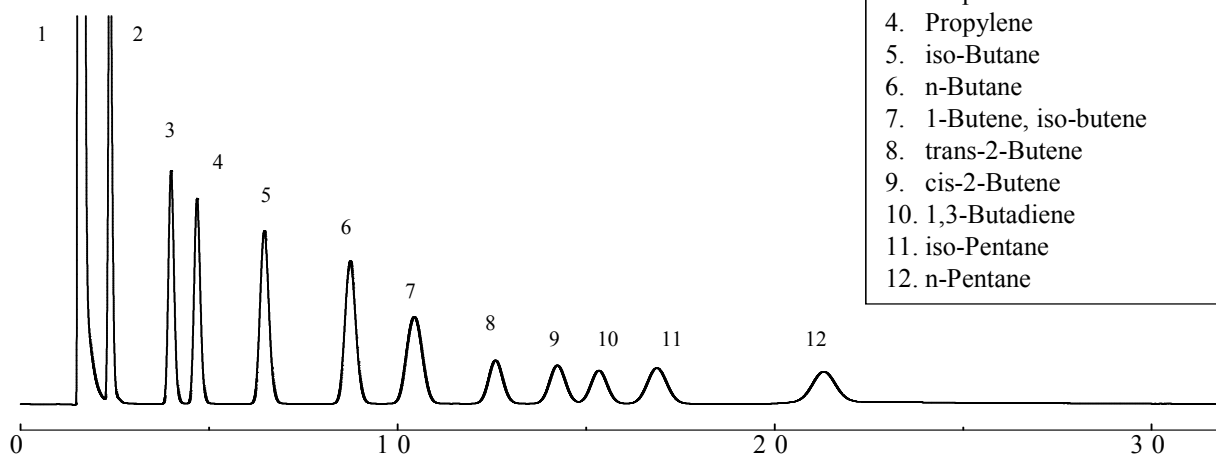
2014
M a y
VOL. 29

Measurement of liquefied petroleum gas (LPG) using Shinwasorb

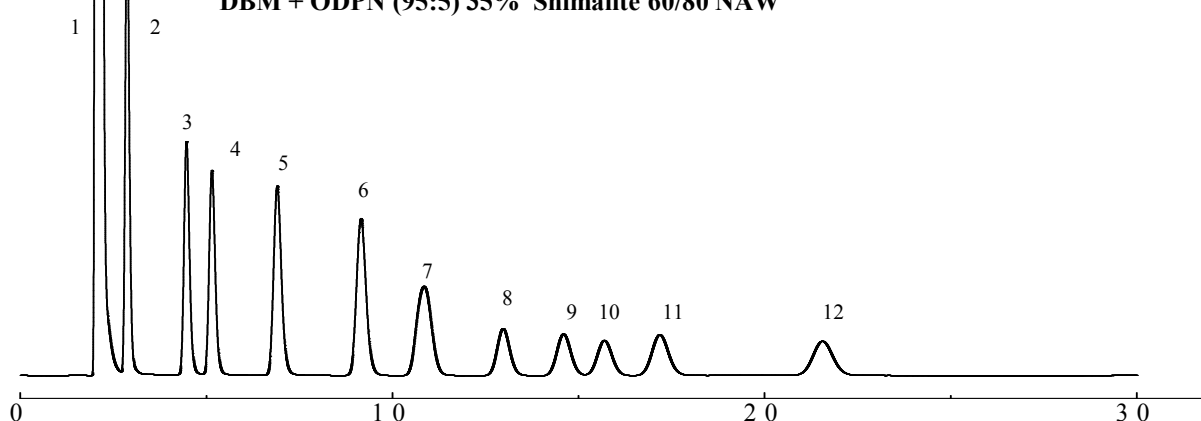
Liquefied petroleum gas (LPG) is subject to regulations covering composition and sulfur content, etc. in many countries.

Shown below is an example of an analysis of liquefied petroleum gas using a column packed with a Shinwasorb packing material, and performed in accordance with a method stipulated in the Japanese Industrial Standards (JIS).

DBM + ODPN (95:5) 35% Shinwasorb-U 60/80



DBM + ODPN (95:5) 35% Shimalite 60/80 NAW



Column: 6.0 m (3.0 m + 3.0 m) x 3.0 mm I.D. SUS
Sample: LPG
Carrier gas: 30 ml/min He (Shimalite)
45 ml/min He (Shinwasorb)
Injection port temp.: 50°C

Sample volume: 1 mL
Column temp.: 40°C
Detector: TCD 50°C



SHINWA CHEMICAL INDUSTRIES LTD.

50-2 Kagekatsu-cho, Fushimi-ku
Kyoto 612-8307 Japan
TEL: +81-75-621-2360 FAX: +81-75-602-2660
E-mail: info@shinwa-cpc.co.jp
Website: <http://shinwa-cpc.co.jp/en/>

■ Packing material specifications and price ■

Product name	Weight	Price
35% (95:5) DBM + ODPN Shinwasorb-U 60/80	25 g	15,200 JPY

■ Packed column specifications and price ■

Product name	Column materials	Dimensions	Price
35% (95:5) DBM + ODPN Shinwasorb-U 60/80	Stainless steel	6.0 m (3.0 m + 3.0 m) x 3.0 mm I.D.	100,700 JPY

The packed column shown above is designed for use in Shimadzu GC systems. Prices for columns for systems manufactured by other manufacturers will differ from that shown above. The above prices are accurate as of May 27th, 2014. Please contact us for pricing.



Please feel free to contact us with questions related to analyses.

Please be aware that specifications and prices are subject to change without prior notification due to the implementation of improvements.