

# SHINWA EXPRESS

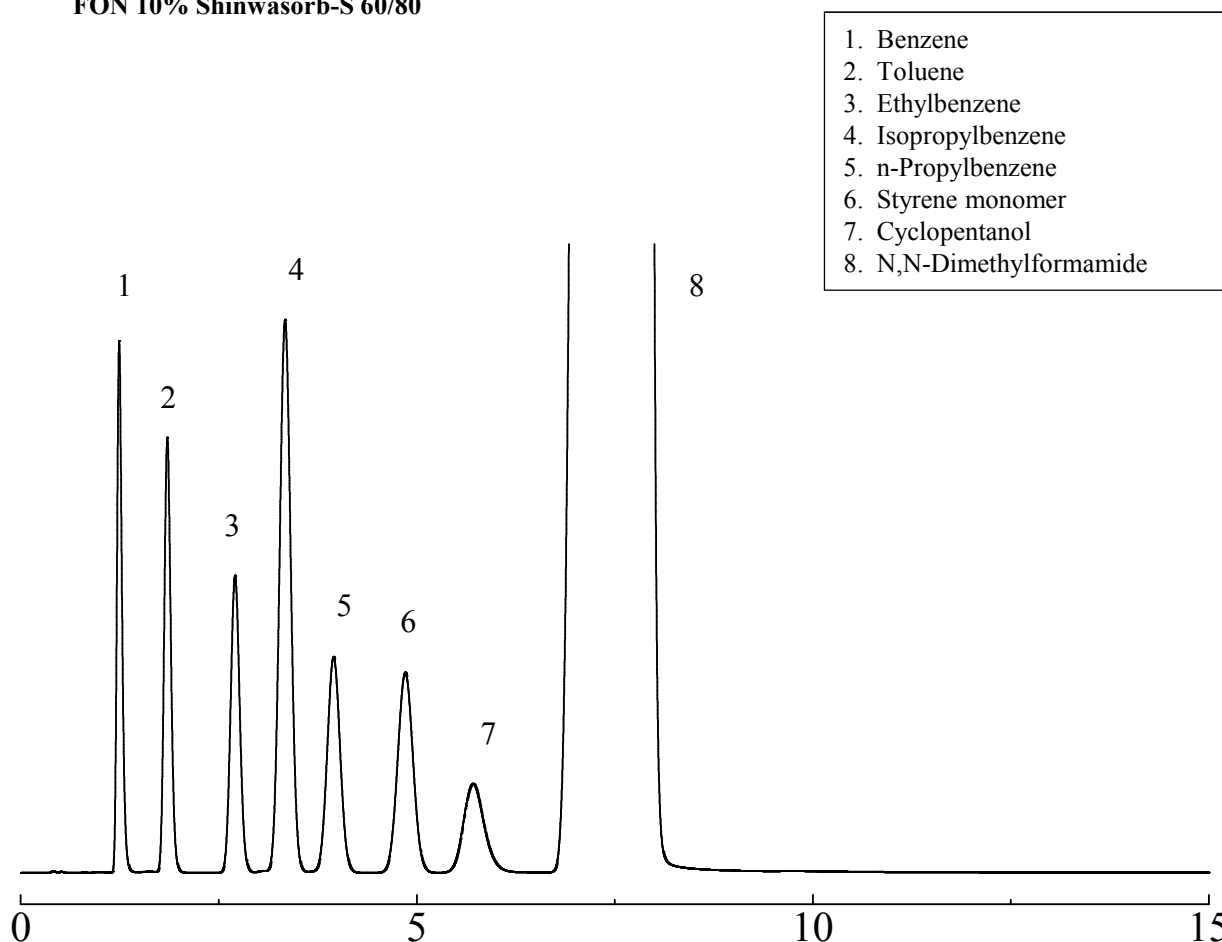
*Application*2014  
October

VOL. 39

## Measurement of styrene monomer in DMF using Shinwasorb

Styrene monomer, which is used as a raw material in the manufacture of products such as polystyrene resin, synthetic rubber, synthetic resin paints, and FRP, possesses a strong, distinctive smell. Shown below is an example of an analysis of styrene monomer in DMF using a column packed with a Shinwasorb packing material.

FON 10% Shinwasorb-S 60/80



Column: 2.1m x 3.2 mm I.D. Glass  
Sample: Styrene monomer in DMF  
Column temp.: 110°C  
Injection port temp.: 230°C

Sample volume: 1 µL  
Carrier gas: 50 ml/min N<sub>2</sub>  
Detector: 230°C (FID)

**SHINWA CHEMICAL INDUSTRIES LTD.**

50-2 Kagekatsu-cho, Fushimi-ku  
Kyoto 612-8307 Japan  
TEL: +81-75-621-2360 FAX: +81-75-602-2660  
E-mail: [info@shinwa-cpc.co.jp](mailto:info@shinwa-cpc.co.jp)  
Website: <http://shinwa-cpc.co.jp/en/>

■ Packing material specifications and price ■

Product name	Weight	Price
FON 10% Shinwasorb-S 60/80	25 g	19,900 JPY

■ Packed column specifications and price ■

Product name	Column material	Dimensions	Price
FON 10% Shinwasorb-S 60/80	Glass (For GC-2014 systems)	2.1 m x 3.2 mm I.D.	59,500 JPY

Prices for glass columns for Shimadzu systems other than the GC-2014, and systems manufactured by other manufacturers will differ from that shown above. The prices shown above are accurate as of October 24th, 2014. Please contact us for pricing.



Please feel free to contact us with questions related to analyses.

Please be aware that specifications and prices are subject to change without prior notification.