

SHINWA EXPRESS

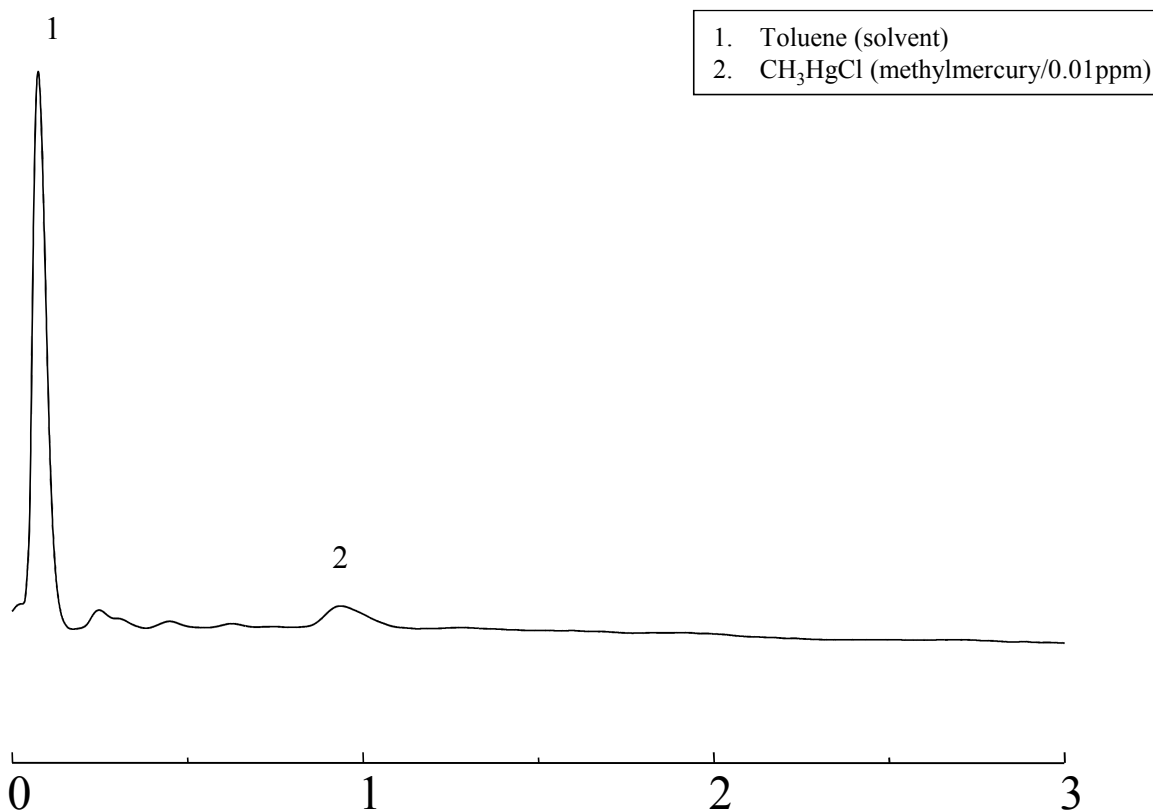
*Application*2014
November

VOL. 41

Measurement of methylmercury in black bass using Shinwasorb

Most organic mercury in the environment is found in the form of methyl and ethylmercury. Of these two, methylmercury, which accumulates in the environment and is not easily degraded, is the most dangerous compound. The presence or absence of these compounds is determined by chlorination of these compounds and subsequent detection using ECD detectors. Shown below is an example of an analysis of methylmercury in black bass using a column packed with a Shinwasorb packing material.

Thermon-HG 5% Shinwasorb-U 60/80



Column: 0.5 m x 3.0 mm I.D. Glass
Sample: Black bass sample in toluene
Column temp.: 170°C
Injection port temp.: 200°C

Sample volume: 1.0 µL
Carrier gas: 50 mL/min N₂
Detector: 200°C (ECD)

**SHINWA CHEMICAL INDUSTRIES LTD.**

50-2 Kagekatsu-cho, Fushimi-ku
Kyoto 612-8307 Japan
TEL: +81-75-621-2360 FAX: +81-75-602-2660
E-mail: info@shinwa-cpc.co.jp
Website: <http://shinwa-cpc.co.jp/en/>

■ Packing material specifications and price ■

Product name	Weight	Price
Thermon-HG 5% Shinwasorb-U 60/80	25 g	30,300 JPY

■ Packed column specifications and price ■

Product name	Column material	Dimensions	Price
Thermon-HG 5% Shinwasorb-U 60/80	Glass (For GC-2014 systems)	0.5 m x 3.0 mm I.D.	60,200 JPY

Prices for glass columns for Shimadzu systems other than the GC-2014, and systems manufactured by other manufacturers will differ from that shown above. The prices shown above are accurate as of November 21st, 2014. Please contact us for pricing.



Please feel free to contact us with questions related to analyses.

Please be aware that specifications and prices are subject to change without prior notification.