

# SHINWA EXPRESS

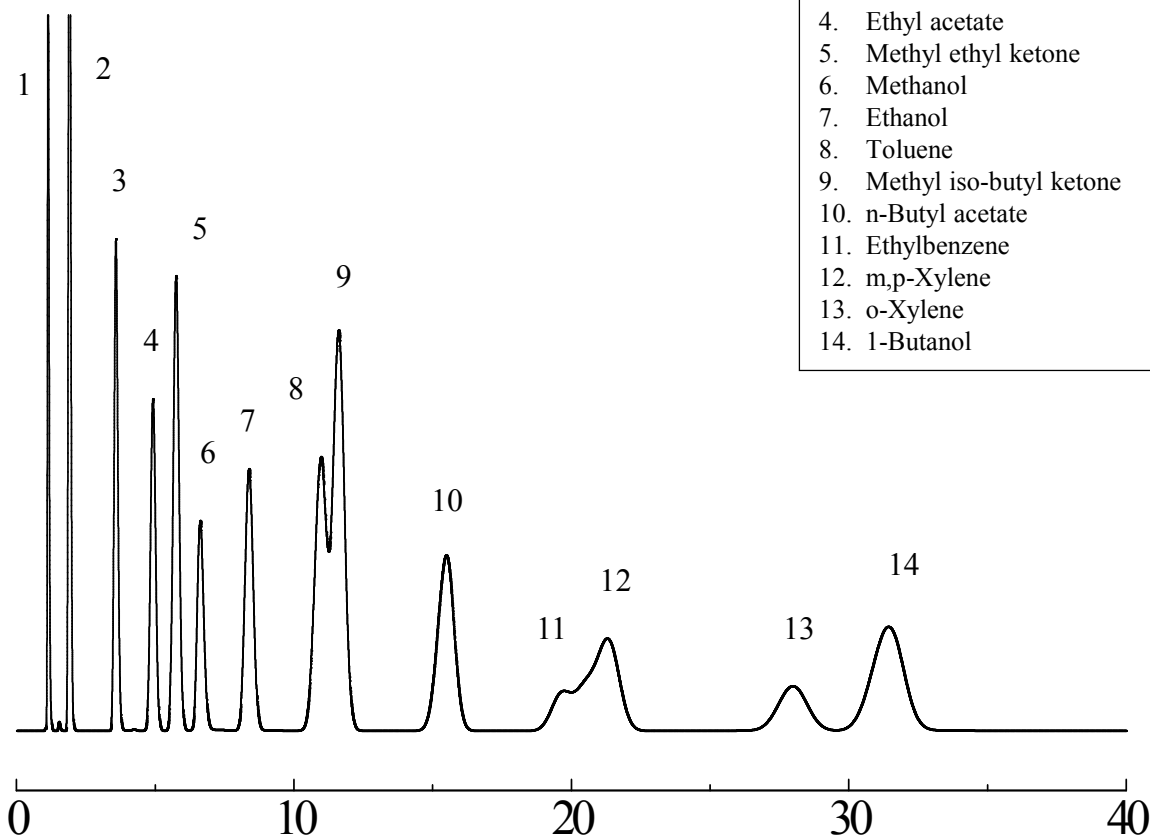
*Application*2015  
January

VOL. 45

## Measurement of organic solvents using Shinwasorb

Analyses of organic solvents serve as an important type of analysis in areas such as quality control measurements of residual organic solvents. Shown below is an example of an analysis of organic solvents using a column packed with a Shinwasorb packing material.

PEG1500 12.5% Shinwasorb-U 40/60



Column: 2.1 m x 3.2 mm I.D. Glass  
Sample: Mixture of 13 organic solvents  
Column temp.: 70°C  
Injection port temp.: 200°C

Sample volume: 1.0 µL  
Carrier gas: 40 mL/min N<sub>2</sub>  
Detector: 200°C (FID)

**SHINWA CHEMICAL INDUSTRIES LTD.**

50-2 Kagekatsu-cho, Fushimi-ku  
Kyoto 612-8307 Japan  
TEL: +81-75-621-2360 FAX: +81-75-602-2660  
E-mail: [info@shinwa-cpc.co.jp](mailto:info@shinwa-cpc.co.jp)  
Website: <http://shinwa-cpc.co.jp/en/>

■ Packing material specifications and price ■

Product name	Weight	Price
PEG1500 12.5% Shinwasorb-U 40/60	25 g	12,100 JPY

■ Packed column specifications and price ■

Product name	Column material	Dimensions	Price
PEG1500 12.5% Shinwasorb-U 40/60	Glass (For GC-2014 systems)	2.1 m x 3.2 mm I.D.	51,700 JPY

Prices for glass columns for Shimadzu systems other than the GC-2014, and systems manufactured by other manufacturers will differ from that shown above. The prices shown above are accurate as of January 23<sup>rd</sup>, 2015. Please contact us for pricing.



Please feel free to contact us with questions related to analyses.

Please be aware that specifications and prices are subject to change without prior notification.