

SHINWA EXPRESS

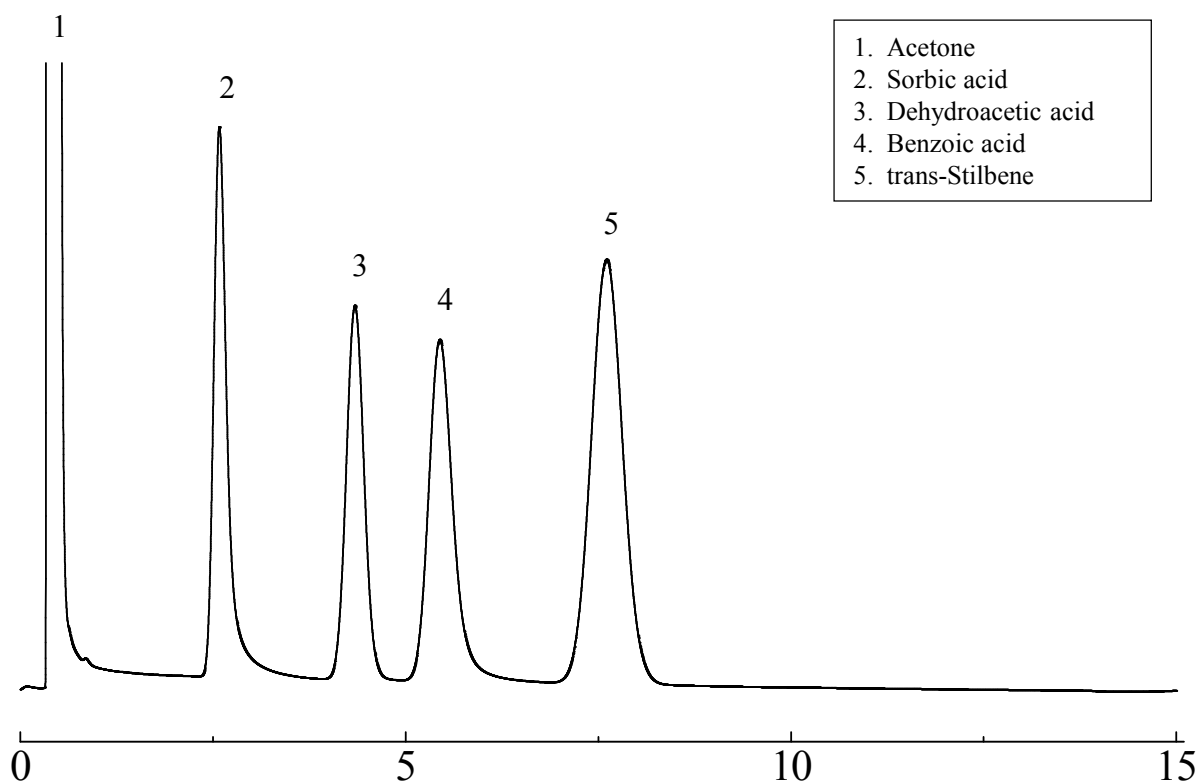
2015
May
VOL. 59

Analysis of preservatives using Shinwasorb

~Part 2~

Food additives such as preservatives, sweeteners, coloring agents, and flavor ingredients are widely used in food manufacturing processes and for processing and preserving food products. Shown below is an example of an analysis of food additives (preservatives) using a column packed with a Shinwasorb packing material.

Advance-DS + H₃PO₄ 2 + 0.25% Shinwasorb-S 60/80



Column: 3.1 m x 3.2 mm I.D. Glass
Sample: Preservatives
Carrier gas: 50 mL/min N₂
Injection port temp.: 260°C

Sample volume: 1.0 µL
Column temp.: 200°C
Detector: FID 260°C



SHINWA CHEMICAL INDUSTRIES LTD.

50-2 Kagekatsu-cho, Fushimi-ku
Kyoto 612-8307 Japan
TEL: +81-75-621-2360 FAX: +81-75-602-2660
E-mail: info@shinwa-cpc.co.jp
Website: <http://shinwa-cpc.co.jp/en/>

■ Packing material specifications and price ■

Product name	Weight	Price
Advance-DS + H ₃ PO ₄ 2 + 0.25% Shinwasorb-S 60/80	25 g	21,100 JPY

■ Packed column specifications and price ■

Product name	Column material	Dimensions	Price
Advance-DS + H ₃ PO ₄ 2 + 0.25% Shinwasorb-S 60/80	Glass (For GC-2014 systems)	3.1 m x 3.2 mm I.D.	66,500 JPY

Prices for glass columns for Shimadzu systems other than the GC-2014, and systems manufactured by other manufacturers will differ from that shown above. The prices shown above are accurate as of May 22nd, 2015. Please contact us for pricing.



Please feel free to contact us with questions related to analyses.

Please be aware that specifications and prices are subject to change without prior notification.