

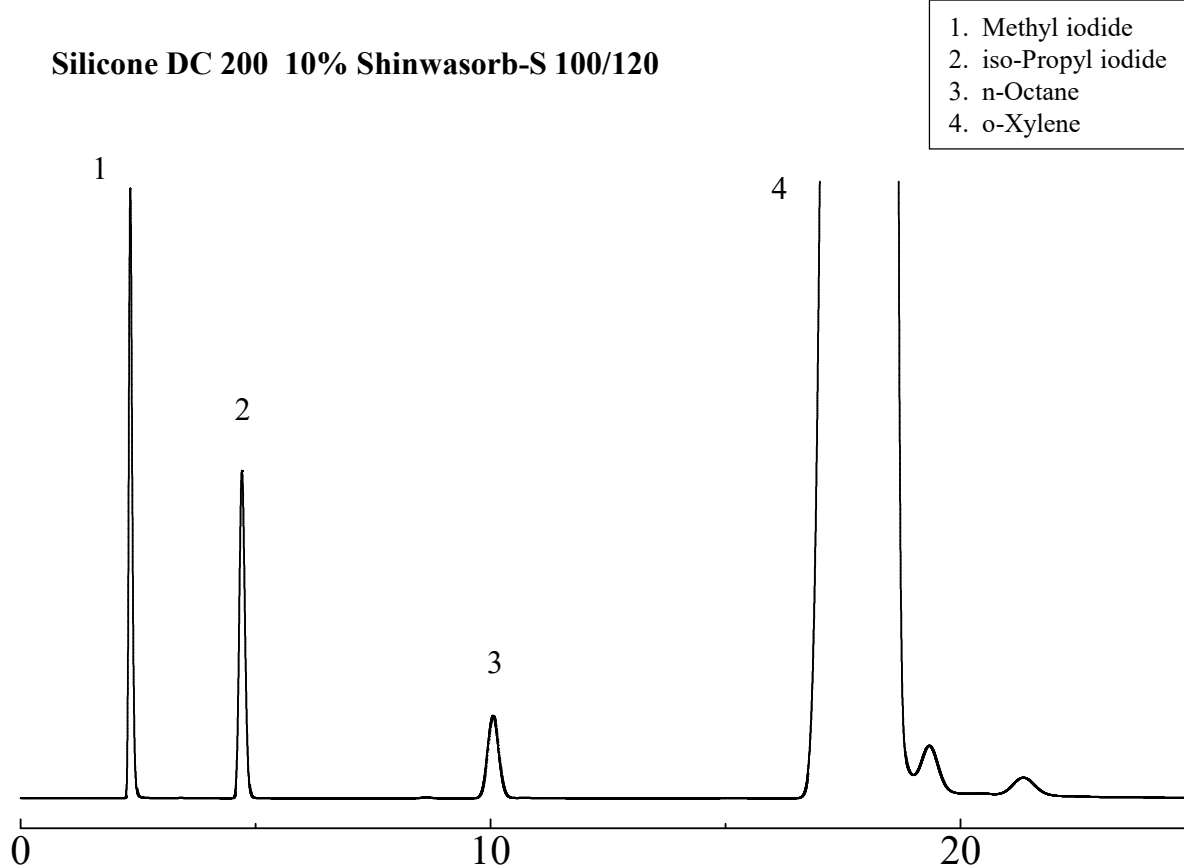
SHINWA EXPRESS

*Application*2015
J u n e

VOL. 62

Analysis of hypromellose using Shinwasorb

As hypromellose (hydroxypropyl methylcellulose) is physiologically non-hazardous as well as chemically inert, it is widely used as a pharmaceutical additive. Shown below is an analysis of hypromellose performed using a column packed with a Shinwasorb packing material and in accordance with the Japanese Pharmacopoeia.

Silicone DC 200 10% Shinwasorb-S 100/120

System performance: Methyl iodide, iso-propyl iodide and n-octane are eluted in this order with the complete separation of these peaks.

Column: 3.1 m x 3.2 mm I.D. Glass
Sample: Methyl iodide, iso-Propyl iodide, n-Octane, o-Xylene
Column temp.: 90°C
Injection port temp.: 200°C
Carrier gas: 38 mL/min N₂ (adjust so that the retention time of n-octane is about 10 minutes.)

Sample volume: 2.0 µL
Detector: FID 200°C

**SHINWA CHEMICAL INDUSTRIES LTD.**

50-2 Kagekatsu-cho, Fushimi-ku
Kyoto 612-8307 Japan
TEL: +81-75-621-2360 FAX: +81-75-602-2660
E-mail: info@shinwa-cpc.co.jp
Website: <http://shinwa-cpc.co.jp/en/>

■ Packing material specifications and price ■

Product name	Weight	Price
Silicone DC 200 10% Shinwasorb-S 100/120	25 g	22,500 JPY

■ Packed column specifications and price ■

Product name	Column material	Dimensions	Price
Silicone DC 200 10% Shinwasorb-S 100/120	Glass (For GC-2014 systems)	3.1 m x 3.2 mm I.D.	69,900 JPY

Prices for glass columns for Shimadzu systems other than the GC-2014, and systems manufactured by other manufacturers will differ from that shown above. The prices shown above are accurate as of June 24th, 2015. Please contact us for pricing.



Please feel free to contact us with questions related to analyses.

Please be aware that specifications and prices are subject to change without prior notification.