

SHINWA EXPRESS

*Application*2015
J u l y

VOL. 64

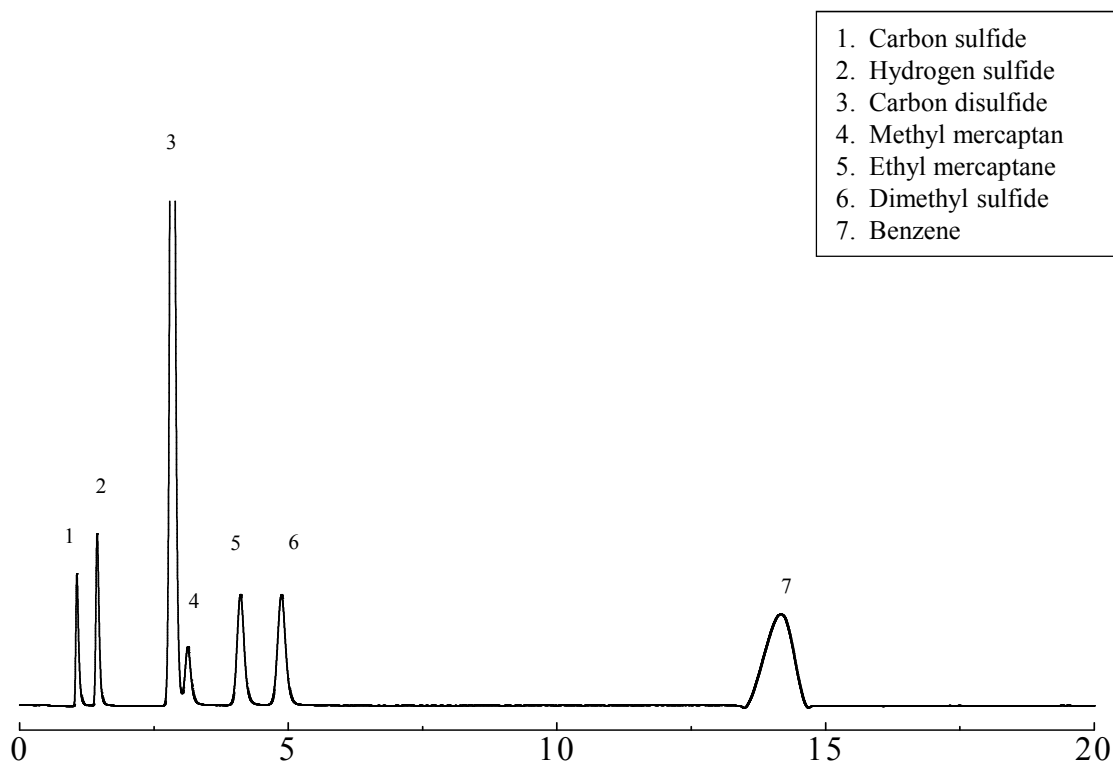
Measurements of offensive odor substances using Shinwasorb

~Part 3~

Because offensive odor substances in air can provoke discomfort and disgust even at very low concentrations, emissions of these substances are regulated in many countries. Shown below is an example of an analysis of offensive odor substances using a column packed with a Shinwasorb packing material, and performed in accordance with a method stipulated by Japan's Ministry of the Environment.

Analysis of methyl mercaptan, hydrogen sulfide and methyl sulfide

1,2,3-TCEP 25% Shinwasorb-S 80/100 ST



Column: 3.1 m x 3.2 mm I.D. Glass
Sample: Each 1.0 ppm in Benzene
Carrier gas: 50 ml/min N₂
Injection port temp.: 180°C

Sample volume: 1.0 µL
Column temp.: 70°C
Detector: FPD 180°C

**SHINWA CHEMICAL INDUSTRIES LTD.**

50-2 Kagekatsu-cho, Fushimi-ku
Kyoto 612-8307 Japan
TEL: +81-75-621-2360 FAX: +81-75-602-2660
E-mail: info@shinwa-cpc.co.jp
Website: <http://shinwa-cpc.co.jp/en/>

■ Packing material specifications and price ■

Product name	Weight	Price
1,2,3,-TCEP 25% Shinwasorb-S 80/100 ST	25 g	28,400 JPY

■ Packed column specifications and price ■

Product name	Column material	Dimensions	Price
1,2,3,-TCEP 25% Shinwasorb-S 80/100 ST	Glass (For GC-2014 systems)	3.1 m x 3.2 mm I.D.	73,800 JPY

Prices for glass columns for Shimadzu systems other than the GC-2014, and systems manufactured by other manufacturers will differ from that shown above. The prices shown above are accurate as of July 24th, 2015. Please contact us for pricing.



Please feel free to contact us with questions related to analyses.

Please be aware that specifications and prices are subject to change without prior notification.