

# SHINWA EXPRESS

Application

2015  
August

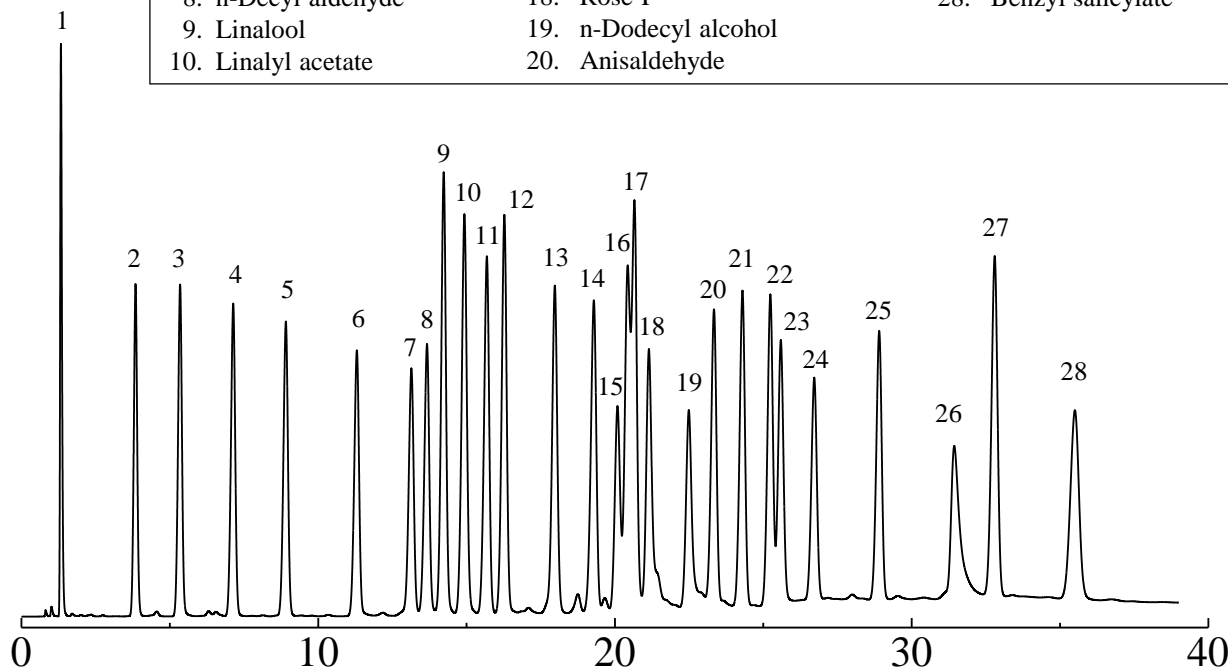
VOL. 66

## Measurements of fragrance using Shinwasorb

Fragrances are normally made from a variety of natural resources like plants and animals or blended from a number of perfumes that is chemically synthesized. Shown below is an analysis of a fragrance performed using a column packed with a Shinwasorb packing material.

### Thermon-3000 5% Shinwasorb-S 80/100

- |                     |                                     |                       |
|---------------------|-------------------------------------|-----------------------|
| 1. Hexane           | 11. Isobornyl acetate (citronellol) | 21. Methyl cinnamate  |
| 2. $\alpha$ -Pinene | 12. Menthol                         | 22. Ethyl cinnamate   |
| 3. $\beta$ -Pinene  | 13. Benzyl acetate                  | 23. Eugenol           |
| 4. Limonene         | 14. Perillaldehyde                  | 24. Heliotropin       |
| 5. n-Octyl aldehyde | 15. Geraniol                        | 25. Diethyl phthalate |
| 6. n-Nonyl aldehyde | 16. $\alpha$ -Ionone                | 26. Vanillin          |
| 7. Citronellal      | 17. Benzyl alcohol                  | 27. Benzyl benzoate   |
| 8. n-Decyl aldehyde | 18. Rose-P                          | 28. Benzyl salicylate |
| 9. Linalool         | 19. n-Dodecyl alcohol               |                       |
| 10. Linalyl acetate | 20. Anisaldehyde                    |                       |



Column: 2.1 m x 3.2 mm I.D. Glass  
 Sample: Fragrance  
 Column temp.: 80-260°C (6°C/min)  
 Injection port temp.: 280°C

Sample volume: 1.0  $\mu$ L  
 Carrier gas: 50 mL/min N<sub>2</sub>  
 Detector: 280°C (FID)


**SHINWA CHEMICAL INDUSTRIES LTD.**

50-2 Kagekatsu-cho, Fushimi-ku  
 Kyoto 612-8307 Japan

TEL: +81-75-621-2360 FAX: +81-75-602-2660

E-mail: [info@shinwa-cpc.co.jp](mailto:info@shinwa-cpc.co.jp)

Website: <http://shinwa-cpc.co.jp/en/>

### ■ Packing material specifications and price ■

Product name	Weight	Price
Thermon-3000 5% Shinwasorb-S 80/100	25 g	33,200 JPY

### ■ Packed column specifications and price ■

Product name	Column material	Dimensions	Price
Thermon-3000 5% Shinwasorb-S 80/100	Glass (For GC-2014 systems)	2.1 m x 3.2 mm I.D.	72,800 JPY

Prices for glass columns for Shimadzu systems other than the GC-2014, and systems manufactured by other manufacturers will differ from that shown above. The prices shown above are accurate as of August 24<sup>th</sup>, 2015. Please contact us for pricing.



Please feel free to contact us with questions related to analyses.

Please be aware that specifications and prices are subject to change without prior notification.