

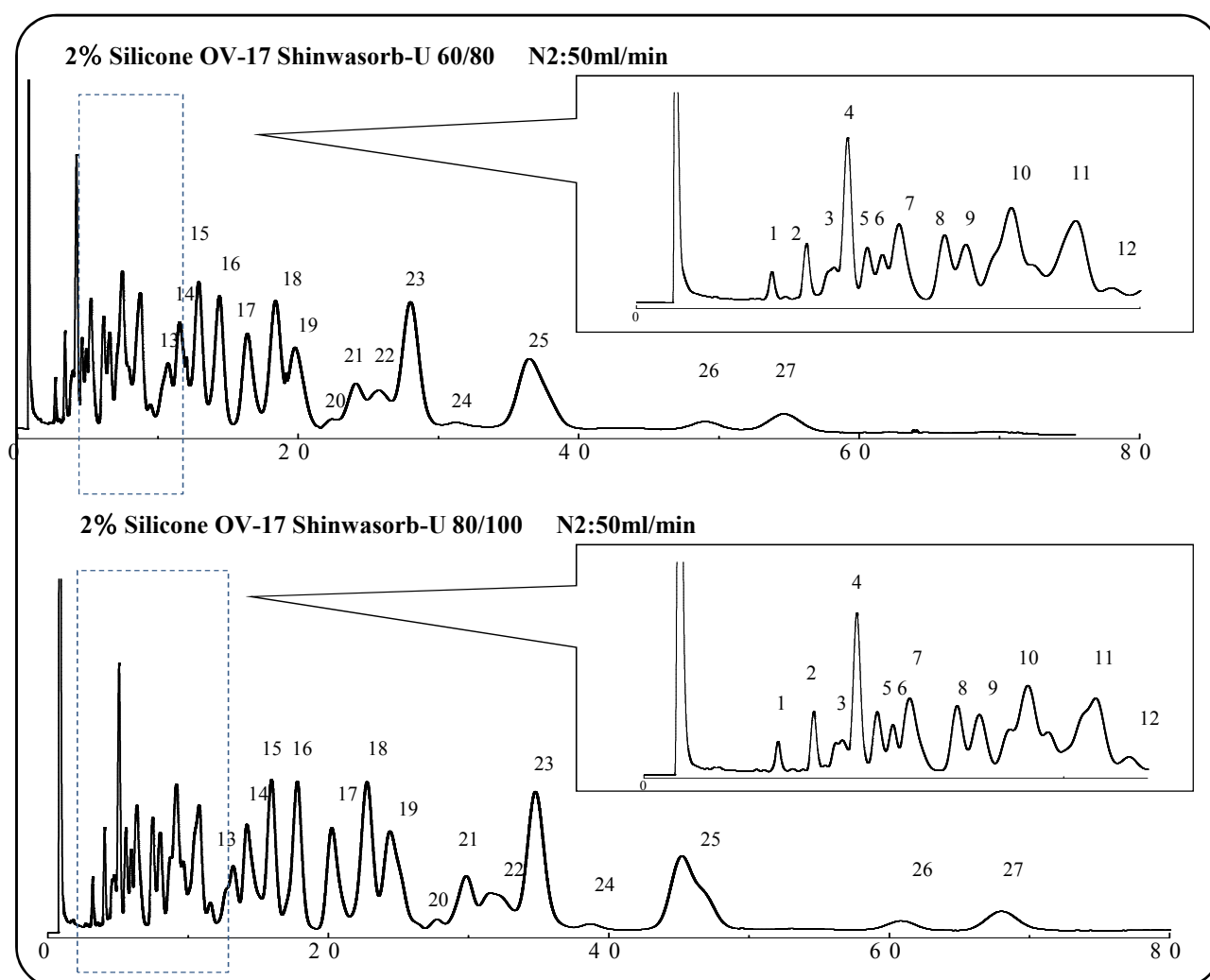
# SHINWA EXPRESS

*Application*2013  
March

VOL. 6

## Analysis of PCBs using Shinwasorb

PCBs (polychlorinated biphenyls) cause cancer and skin disorders. Although production of PCBs in Japan ceased in 1972 due to their high toxicity, levels of these compounds in wastewater are currently monitored in accordance with Japan's Water Pollution Prevention Law. Shown below are examples of analyses of PCBs using columns packed with Shinwasorb packing materials.



Column: 2.1 m x 3.2 mm I.D. Glass  
Sample: KC-mix each 1.0 ppm in hexane  
Column temp. 210°C  
Injection port temp.: 260°C

Sample volume: 4.0 µL  
Carrier gas: 50 mL/min N<sub>2</sub>  
Detector: ECD 260°C

**SHINWA CHEMICAL INDUSTRIES LTD.**

50-2 Kagekatsu-cho, Fushimi-ku  
Kyoto 612-8307 Japan  
TEL: +81-75-621-2360 FAX: +81-75-602-2660  
E-mail: [info@shinwa-cpc.co.jp](mailto:info@shinwa-cpc.co.jp)  
Website: <http://shinwa-cpc.co.jp/en/>

■ Packing material specifications and prices ■

Product name	Weight	Price
2% Silicone OV-17 Shinwasorb-U 60/80	25 g	17,600 JPY
2% Silicone OV-17 Shinwasorb-U 80/100	25 g	20,800 JPY

■ Packed column specifications and prices ■

Product name	Column material	Dimensions	Price
1% Silicone OV-1 Shinwasorb-U 60/80	Glass	2.1 m x 3.2 mm I.D.	61,200 JPY
1% Silicone OV-17 Shinwasorb-U 60/80	Glass	2.1 m x 3.2 mm I.D.	64,400 JPY

Prices for glass columns for Shimadzu systems other than the GC-2014, and systems manufactured by other manufacturers will differ from that shown above. The prices shown above are accurate as of November 7th, 2014. Please contact us for pricing.



Please feel free to contact us with questions related to analyses.