

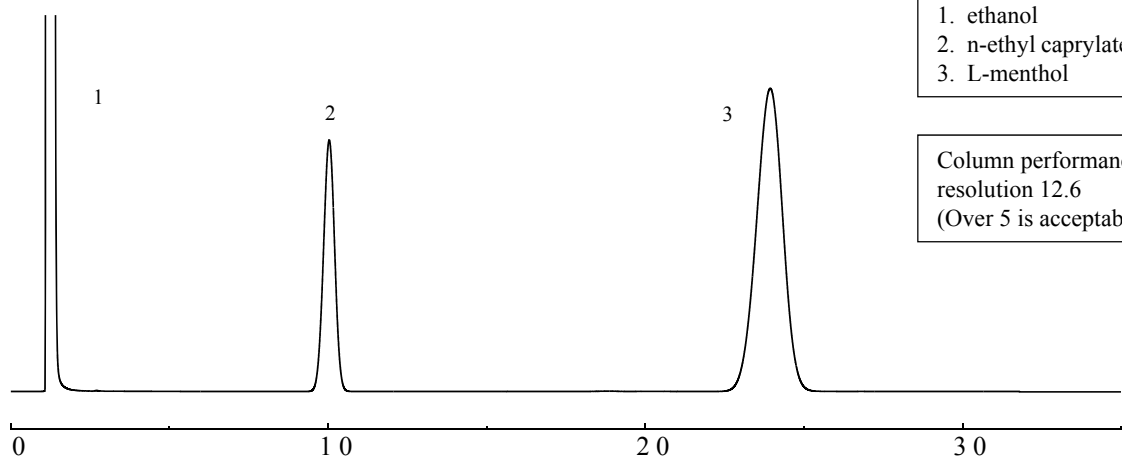
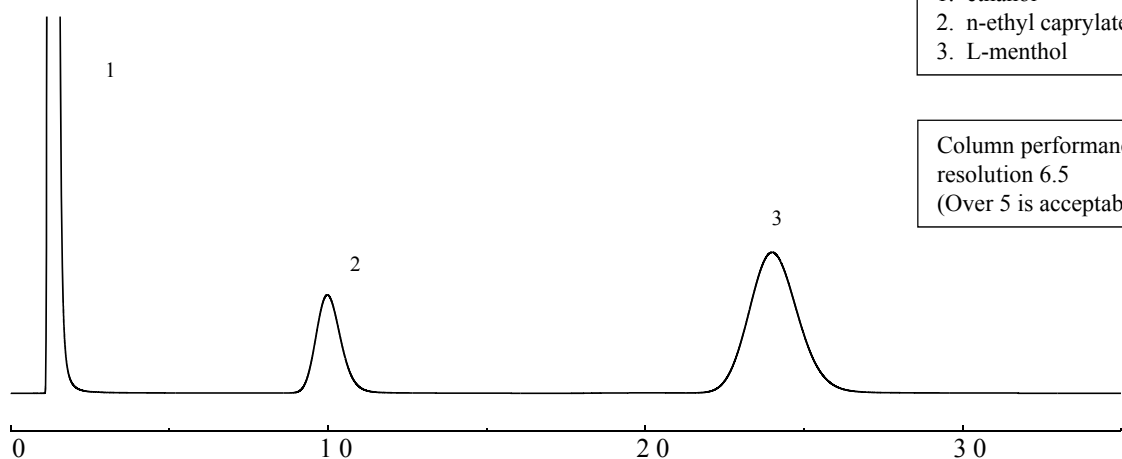
SHINWA EXPRESS

*Application*2016
August

VOL. 90

Analysis of polystyrene peppermint oil using Shinwasorb

Peppermint oil is made from dried mint and it is stated that over 30% of menthol should be included in the peppermint oil for the analysis of peppermint oil under Japanese Pharmacopoeia. It is used as flavor and taste in food additives. Also it is used as medicine that is effective to relieve pain and itchiness. Shown below is an example of n-ethyl caprylate and L-mentho using a column packed with a Shinwasorb packing material under Japanese Pharmacopoeia.

PEG6000 12.5% Shinwasorb-S 60/80**PEG6000 25% Chromosorb-W 60/80 AW-DMCS**

Column: 2.1 m x 3.2 mm I.D. Glass
Sample: ethanol, n-ethyl caprylate, L-menthol
Column temp.: 140°C
Injection port temp.: 200°C

Sample volume: 1.0 µL
Carrier gas: 33 mL/min N₂ (Shinwasorb)
Carrier gas: 28 mL/min N₂ (Chromosorb-W)
Detector: FID 200°C

**SHINWA CHEMICAL INDUSTRIES LTD.**

50-2 Kagekatsu-cho, Fushimi-ku
Kyoto 612-8307 Japan
TEL: +81-75-621-2360 FAX: +81-75-602-2660
E-mail: info@shinwa-cpc.co.jp
Website: <http://shinwa-cpc.co.jp/en/>

■ Packing material specifications and price ■

Product name	Weight	Price
PEG 6000 12.5% Shinwasorb-S 60/80	25 g	15,100 JPY

■ Packed column specifications and price ■

Product name	Column material	Dimensions	Price
PEG 6000 12.5% Shinwasorb-S 60/80	Glass (For GC-2014 systems)	2.1 m x 3.2 mm I.D.	54,700 JPY

Prices for stainless columns other than for Shimadzu GC systems will differ from that shown above. The prices shown above are accurate as of August 24th, 2016. Please contact us for pricing.



Please feel free to contact us with questions related to analyses.

Please be aware that specifications and prices are subject to change without prior notification.