

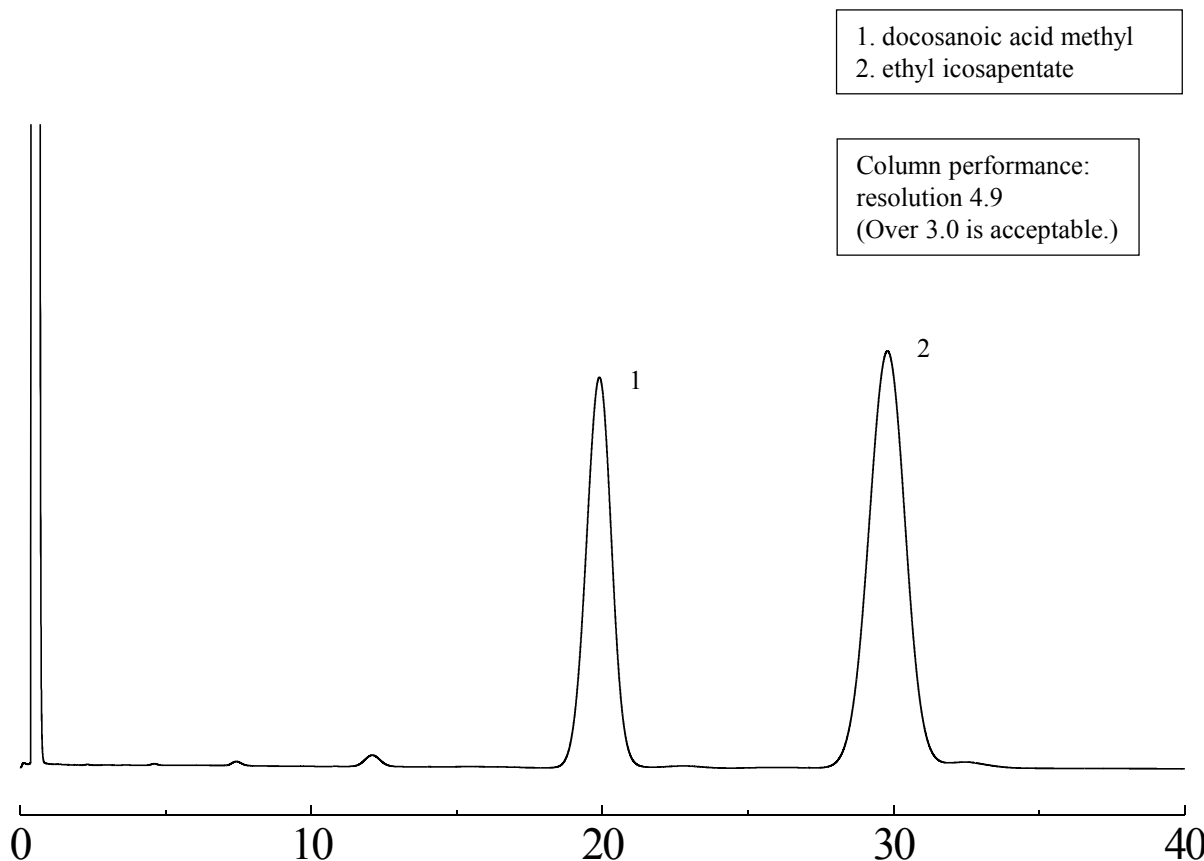
# SHINWA EXPRESS

*Application*2016  
October

VOL. 94

## Analysis of ethyl icosapentate using Shinwasorb

Ethyl icosapentate has a platelet aggregation inhibition action which is used as therapeutic medicine for myocardial infarction, cerebral infarction and pulmonary embolism. Shown below is an example of an analysis of ethyl icosapentate using a column packed with a Shinwasorb packing material under Japanese Pharmacopoeia.

**DEGS 12.5% Shinwasorb-S 60/80**

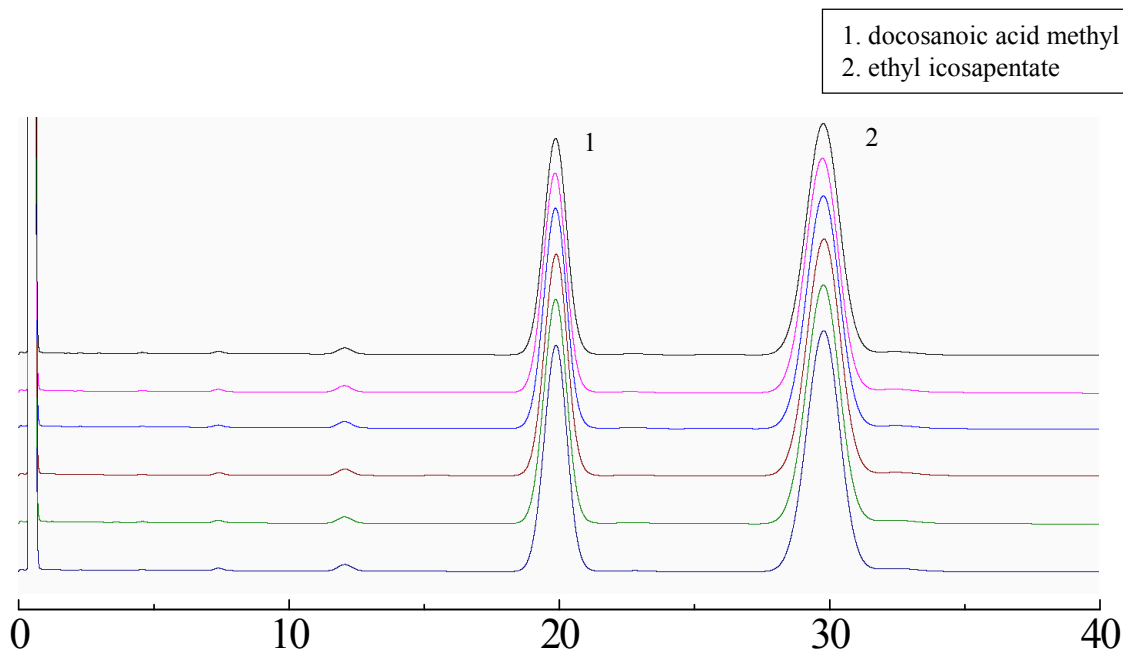
Column: 1.8 m x 4.0 mm I.D. Glass  
Sample: docosanoic acid methyl, ethyl icosapentate  
Column temp.: 210°C  
Injection port temp.: 230°C

Sample volume: 3.0 µL  
Carrier gas: 47 mL/min N<sub>2</sub>  
Detector: FID 200°C

**SHINWA CHEMICAL INDUSTRIES LTD.**

50-2 Kagekatsu-cho, Fushimi-ku  
Kyoto 612-8307 Japan  
TEL: +81-75-621-2360 FAX: +81-75-602-2660  
E-mail: [info@shinwa-cpc.co.jp](mailto:info@shinwa-cpc.co.jp)  
Website: <http://shinwa-cpc.co.jp/en/>

## DEGS 12.5% Shinwasorb-S 60/80



### System suitability

Column performance: The resolution between the docosanoic acid methyl and ethyl icosapentate is 4.9  
(The resolution not less than 3 is acceptable. The first peak should be the docosanoic acid methyl and the second is ethyl icosapentate.)

Column performance: relative standard deviation for rate of peak area is 0.46%  
(The relative standard deviation of the ratio of the sum of the peak areas not more than 1.0% is acceptable.)

Column: 1.8 m x 4.0 mm I.D. Glass  
Sample: docosanoic acid methyl, ethyl icosapentate  
Column temp.: 210°C  
Injection port temp.: 230°C

Sample volume: 3.0 µL  
Carrier gas: 47 mL/min N<sub>2</sub>  
Detector: FID 200°C

### ■ Packing material specifications and price ■

Product name	Weight	Price
DEGS 12.5% Shinwasorb-S 60/80	25 g	15,100 JPY

### ■ Packed column specifications and price ■

Product name	Column material	Dimensions	Price
DEGS 12.5% Shinwasorb-S 60/80	Glass (For GC-2014 systems)	1.8 m x 4.0 mm I.D.	61,600 JPY

Prices for stainless columns other than for Shimadzu GC systems will differ from that shown above. The prices shown above are accurate as of October 24th, 2016. Please contact us for pricing.

Please feel free to contact us with questions related to analyses.

Please be aware that specifications and prices are subject to change without prior notification.