

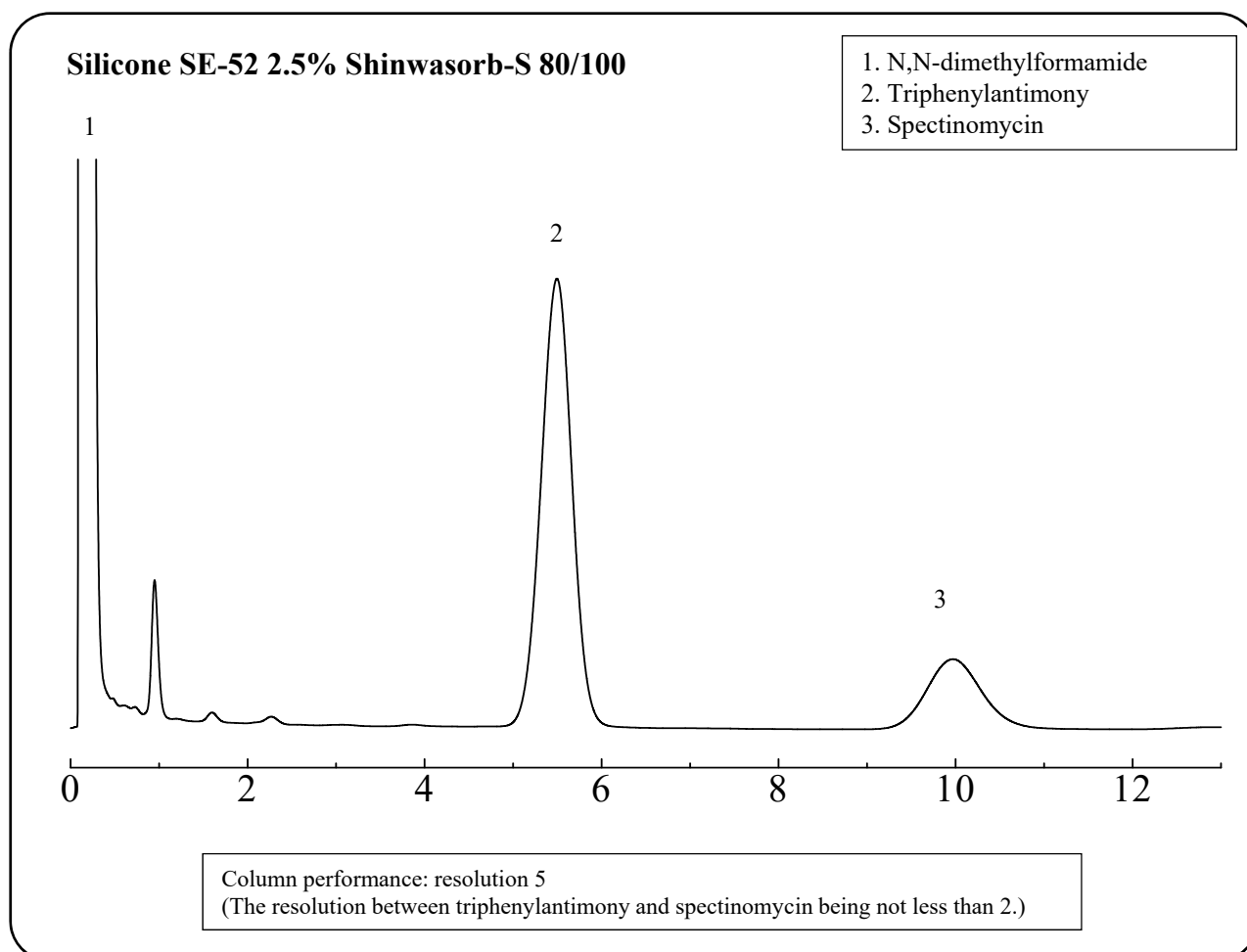
SHINWA EXPRESS

*Application*2017
January

VOL. 100

Analysis of spectinomycin hydrochloride hydrate using Shinwasorb

Spectinomycin hydrochloride is used in treatment of *Neisseria gonorrhoeae* infections, especially in patients who have allergic reactions to penicillin. Shown below is an example of an analysis of spectinomycin hydrochloride hydrate using a column packed with a Shinwasorb packing material under Japanese Pharmacopoeia.



Column: 0.6 m x 3.2 mm I.D. Glass

Sample volume: 1.0 μ L

Sample: N,N-dimethylformamide, Triphenylantimony, Spectinomycin

Detector: FID 220

Column temp.: 180

Injection port temp.: 215

Carrier gas: 37 mL/min N (Adjust so that the retention time of spectinomycin is about 10 minutes.)

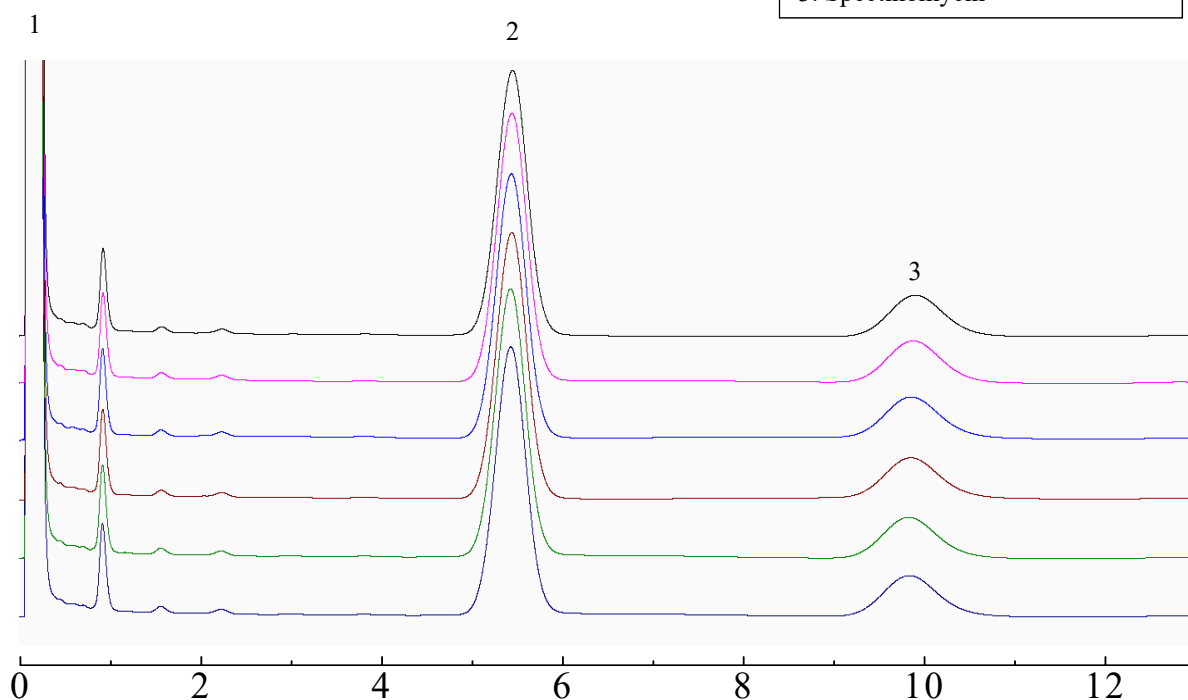
**SHINWA CHEMICAL INDUSTRIES LTD.**50-2 Kagekatsu-cho, Fushimi-ku
Kyoto 612-8307 Japan

TEL: +81-75-621-2360 FAX: +81-75-602-2660

E-mail: info@shinwa-cpc.co.jpWebsite: <http://shinwa-cpc.co.jp/en/>

Silicone SE-52 2.5% Shinwasorb-S 80/100

1. N,N-dimethylformamide
2. Triphenylantimony
3. Spectinomycin



System suitability

System performance: The resolution between triphenylantimony and spectinomycin is 5.
(The resolution between triphenylantimony and spectinomycin being not less than 2.)

System repeatability: The relative standard deviation is 0.21%
(When the test is repeated 6 times, the relative standard deviation of the ratio of the peak area of triphenylantimony to spectinomycin is not more than 1.5%.)

Column: 0.6 m x 3.2 mm I.D. Glass

Sample volume: 1.0 μ L

Sample: N,N-dimethylformamide, Triphenylantimony, Spectinomycin

Detector: FID 220

Column temp.: 180

Injection port temp.: 215

Carrier gas: 37 mL/min N₂ (Adjust so that the retention time of spectinomycin is about 10 minutes.)

Packing material specifications and price

Product name	Weight	Price
Silicone SE-52 2.5% Shinwasorb-S 80/100	25 g	18,500 JPY

Packed column specifications and price

Product name	Column material	Dimensions	Price
Silicone SE-52 2.5% Shinwasorb-S 80/100	Glass (For GC-2014 systems)	0.6 m x 3.2 mm I.D.	57,300 JPY

Prices for glass columns for Shimadzu systems other than the GC-2014, and systems manufactured by other manufacturers will differ from that shown above. The prices shown above are applicable as of January 24th, 2017. Please contact us for pricing.

Please feel free to contact us with questions related to analyses.

Please be aware that specifications and prices are subject to change without prior notification.