

SHINWA EXPRESS

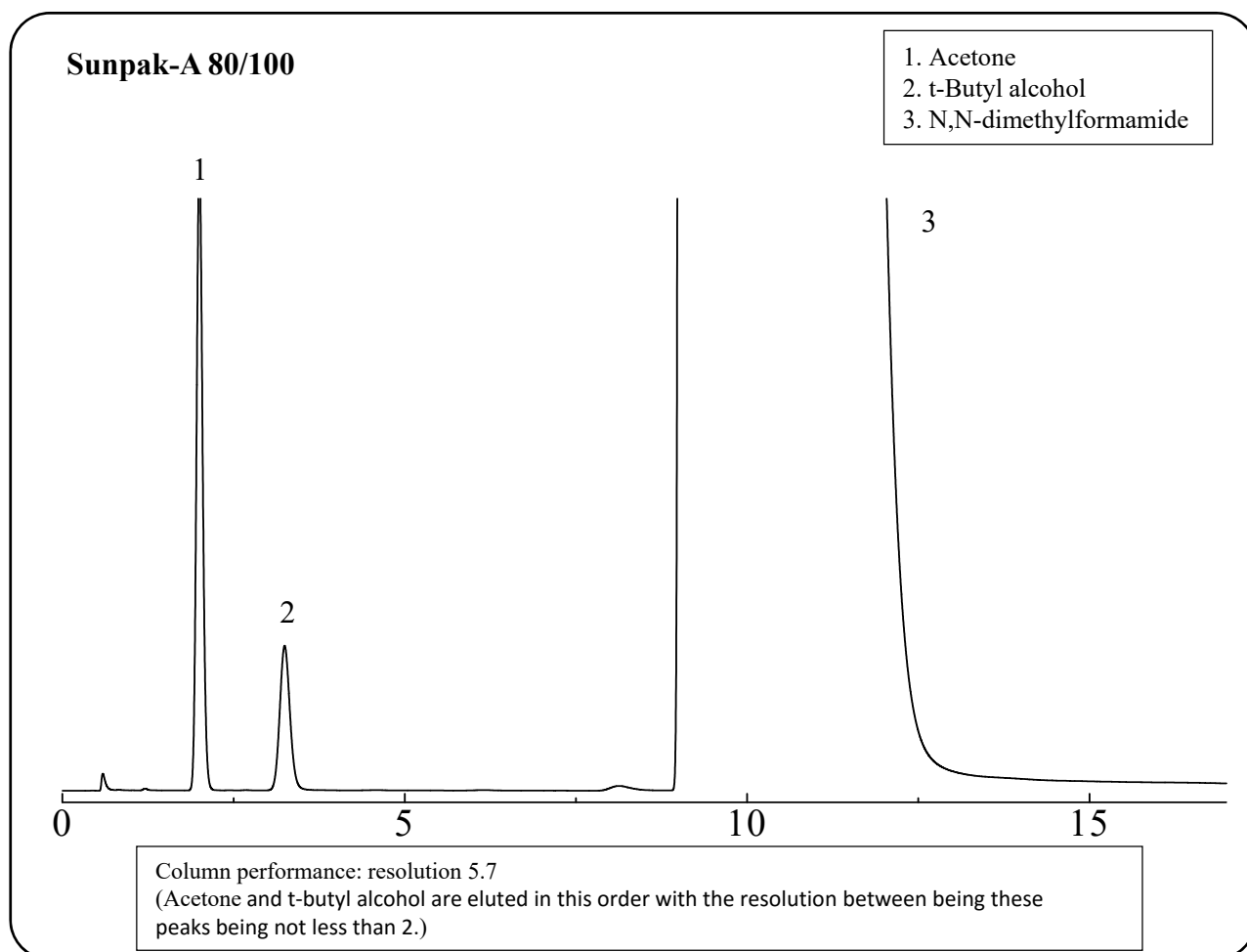
Application

2017
March
VOL. 104

Analysis of metildigoxin using Sunpak-A

Metildigoxin is used as a remedy for heart failure because it enhances the contraction power of the heart and calms the pulse.

Shown below is an analysis of metildigoxin performed using a column packed with a Sunpak-A packing material and in accordance with the Japanese Pharmacopoeia.



Column: 2.1 m x 2.0 mm I.D. Glass
Sample: Acetone, t-Butyl alcohol, N,N-Dimethylformamide
Column temp.: 170
Injection port temp.: 250
Carrier gas: 38 mL/min N₂ (adjust so that the retention time of acetone is about 2 minutes.)

Sample volume: 1.0 µL
Detector: FID 250

**SHINWA CHEMICAL INDUSTRIES LTD.**

50-2 Kagekatsu-cho, Fushimi-ku
Kyoto 612-8307 Japan
TEL: +81-75-621-2360 FAX: +81-75-602-2660
E-mail: info@shinwa-cpc.co.jp
Website: <http://shinwa-cpc.co.jp/en/>

Packed column specifications and price

Product name	Column material	Dimensions	Price
Sunpak-A 80/100	Glass (For GC-2014 systems)	2.1 m x 2.0 mm I.D.	72,900 JPY

Prices for glass columns for Shimadzu systems other than the GC-2014, and systems manufactured by other manufacturers will differ from that shown above. The prices shown above are applicable as of March 24th, 2017. Please contact us for pricing.

Please feel free to contact us with questions related to analyses.

Please be aware that specifications and prices are subject to change without prior notification.