

# SHINWA EXPRESS

*Application*

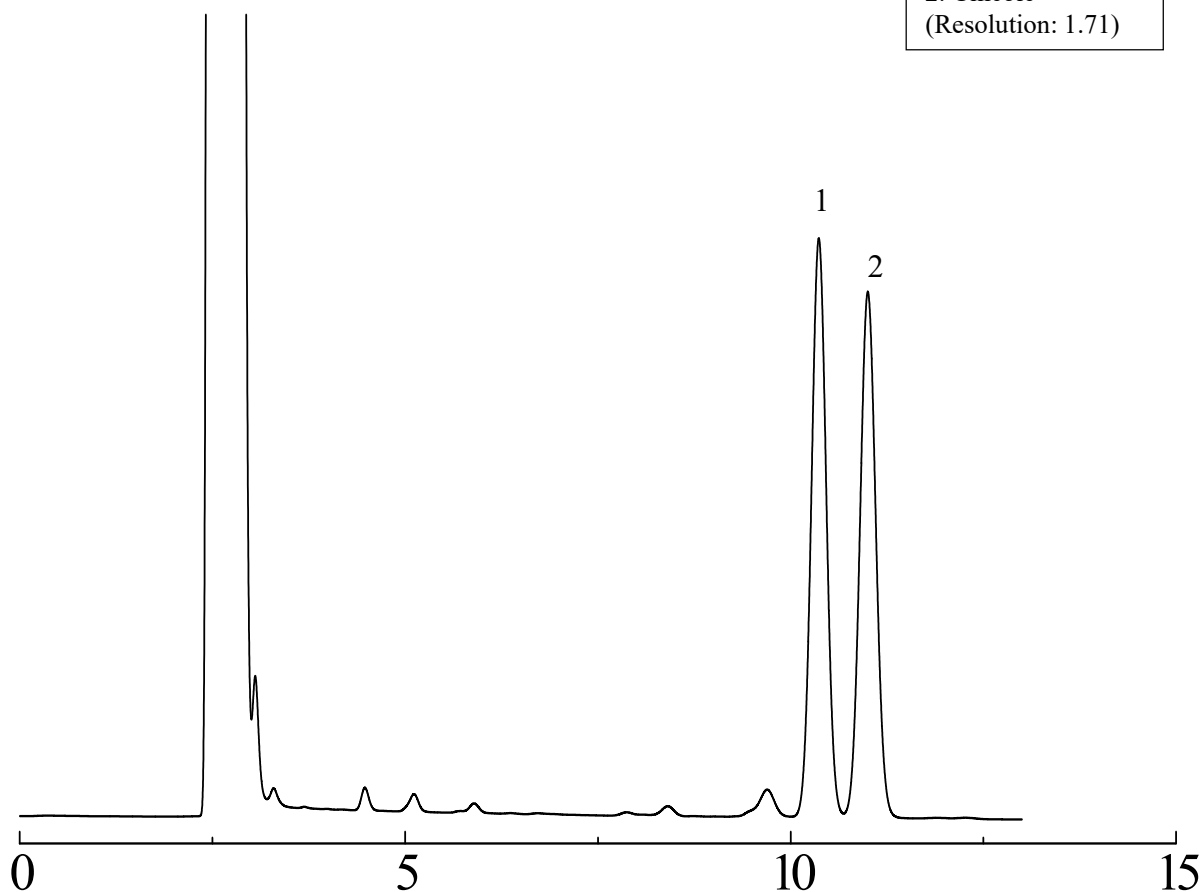
2017  
M a y  
VOL. 108

## Analysis of eucalyptus oil using Shinwasorb ~Part 2~

According to official methods in many countries, eucalyptus oil should contain 70% or more of cineol which is main component of eucalyptus oil. Also eucalyptus oil is used in medical drugs due to its sterilization, stimulating and antiseptis property. Shown below is an analysis of eucalyptus oil performed using a column packed with a Shinwasorb packing material and in accordance with public comment in the Japanese Pharmacopoeia.

Thermon-3000 5% Shinwasorb-S 80/100

1. Limonene  
2. Cineole  
(Resolution: 1.71)



Column: 5.1 m x 3.2 mm I.D. Glass  
Sample: Limonene, Cineole in hexane  
Column temp.: 130°C  
Injection port temp.: 200°C

Sample volume: 2.0 µL  
Carrier gas: 35 mL/min N<sub>2</sub>  
Detector: FID 200°C

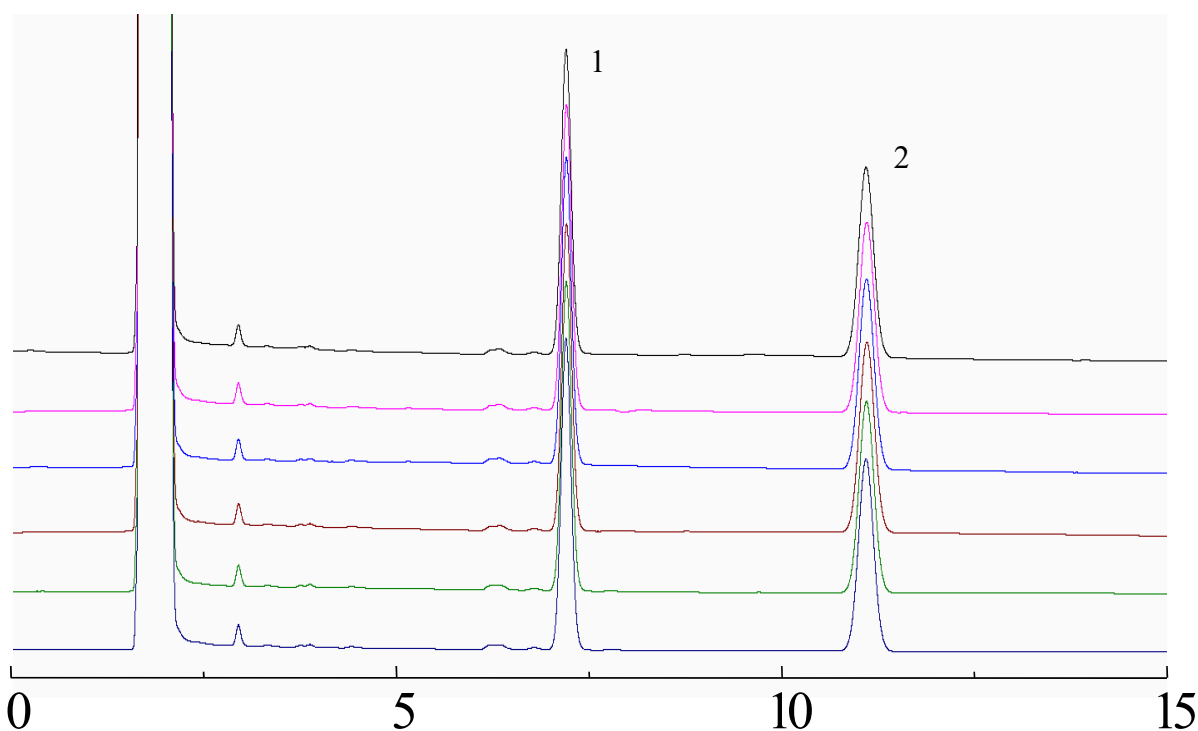


SHINWA CHEMICAL INDUSTRIES LTD.

50-2 Kagekatsu-cho, Fushimi-ku  
Kyoto 612-8307 Japan  
TEL: +81-75-621-2360 FAX: +81-75-602-2660  
E-mail: [info@shinwa-cpc.co.jp](mailto:info@shinwa-cpc.co.jp)  
Website: <http://shinwa-cpc.co.jp/en/>

**Thermon-3000 5% Shinwasorb-S 80/100**

1. Cineole  
2. Anisole

**System suitability**

System performance: The resolution between limonene and cineole is 1.71.  
(The resolution between limonene and cineole being not less than 1.5.)

System repeatability: The relative standard deviation is 0.28%  
(When the test is repeated 6 times, the relative standard deviation of the ratio of the peak area of anisole to cineole is not more than 1.0%)

Column: 5.1 m x 3.2 mm I.D. Glass  
Sample: Cineole, Anisole in hexane  
Column temp.: 130°C  
Injection port temp.: 200°C

Sample volume: 2.0 µL  
Carrier gas: 35 mL/min N<sub>2</sub>  
Detector: FID 200°C

**Packing material specifications and price**

Product name	Weight	Price
Thermon-3000 5% Shinwasorb-S 80/100	25 g	33,200 JPY

**Packed column specifications and price**

Product name	Column material	Dimensions	Price
Thermon-3000 5% Shinwasorb-S 80/100	Glass (For GC-2014 systems)	5.1 m x 3.2 mm I.D.	137,100 JPY

Prices for glass columns for Shimadzu systems other than the GC-2014, and systems manufactured by other manufacturers will differ from that shown above. The prices shown above are applicable as of May 24<sup>th</sup>, 2017. Please contact us for pricing.

Please feel free to contact us with questions related to analyses.

Please be aware that specifications and prices are subject to change without prior notification.