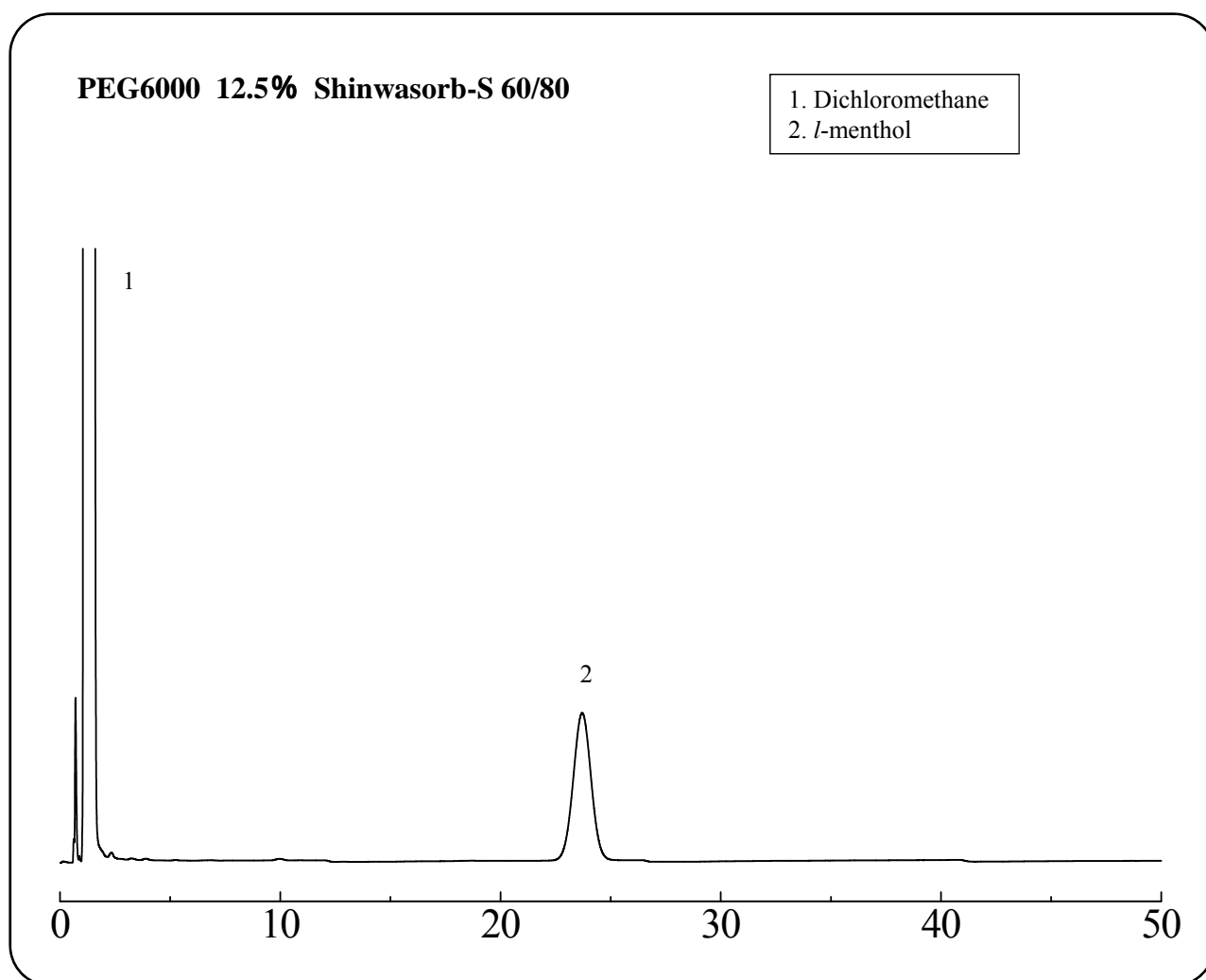


SHINWA EXPRESS

*Application*2017
J u n e
VOL. 110

Analysis of *l*-menthol using Shinwasorb

l-menthol is widely used as a medicine because it has a vasodilating action and skin irritation action in addition to being used as refrigerant. Shown below is an analysis of *l*-menthol performed using a column packed with a Shinwasorb packing material and in accordance with the Japanese Pharmacopoeia.



Column: 2.1m x3.2 mm I.D. Glass

Sample: *l*-menthol in dichloromethaneCarrier gas: 33 mL/min N₂

Injection port temp.: 200

Sample volume: 5.0 µL

Column temp.: 140

Detector: 200 (FID)

**SHINWA CHEMICAL INDUSTRIES LTD.**

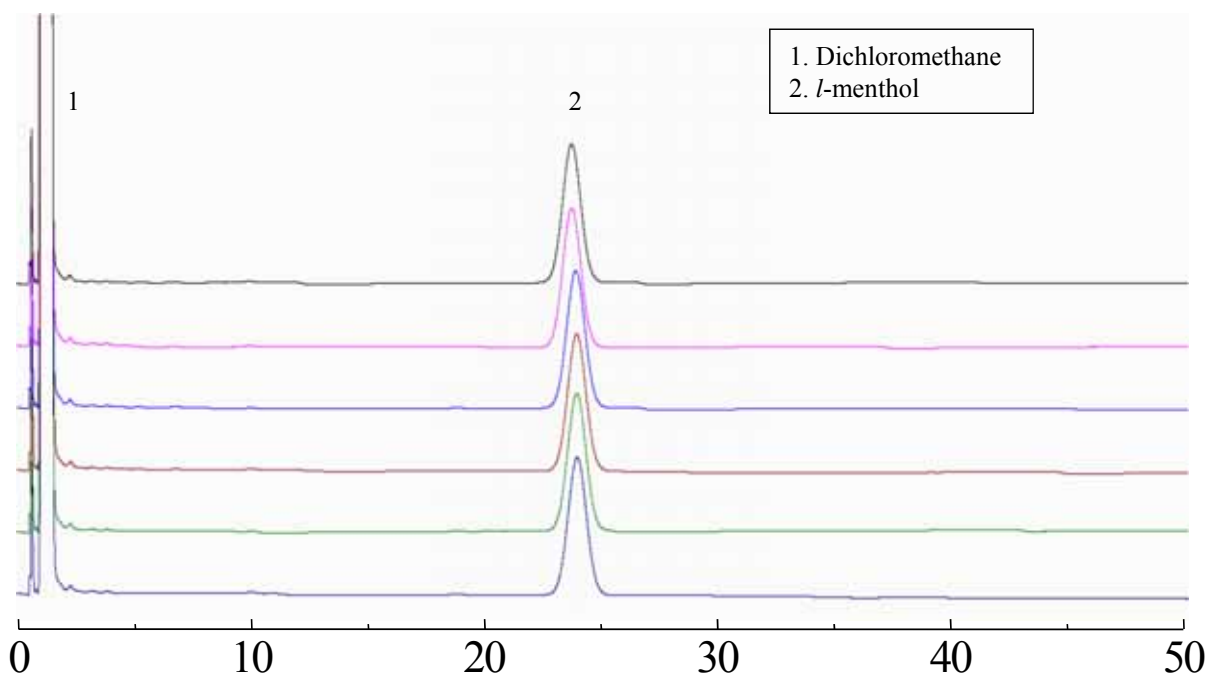
50-2 Kagekatsu-cho, Fushimi-ku

Kyoto 612-8307 Japan

TEL: +81-75-621-2360 FAX: +81-75-602-2660

E-mail: info@shinwa-cpc.co.jpWebsite: <http://shinwa-cpc.co.jp/en/>

PEG6000 12.5% Shinwasorb-S 60/80



System repeatability: The relative standard deviation is 0.82%.
 (It is the relative standard deviation of the ratio of the peak area of *l*-menthol to dichloromethane when the test is repeated 6 times.)

Column:	2.1m x3.2 mm I.D. Glass	Sample volume:	5.0 μ L
Sample:	<i>l</i> -menthol in dichloromethane	Column temp.:	140
Carrier gas:	33 mL/min N ₂	Detector:	200 (FID)
Injection port temp.:	200		

Packing material specifications and price

Product name	Weight	Price
PEG6000 12.5% Shinwasorb-S 60/80	25 g	15,100 JPY

Packed column specifications and price

Product name	Column material	Dimensions	Price
PEG6000 12.5% Shinwasorb-S 60/80	Glass (For GC-2014 systems)	2.1 m x 3.2 mm I.D.	54,700 JPY

Prices for glass columns for Shimadzu systems other than the GC-2014, and systems manufactured by other manufacturers will differ from that shown above. The prices shown above are applicable as of June 23rd, 2017. Please contact us for pricing.

Please feel free to contact us with questions related to analyses.

Please be aware that specifications and prices are subject to change without prior notification.