

SHINWA EXPRESS

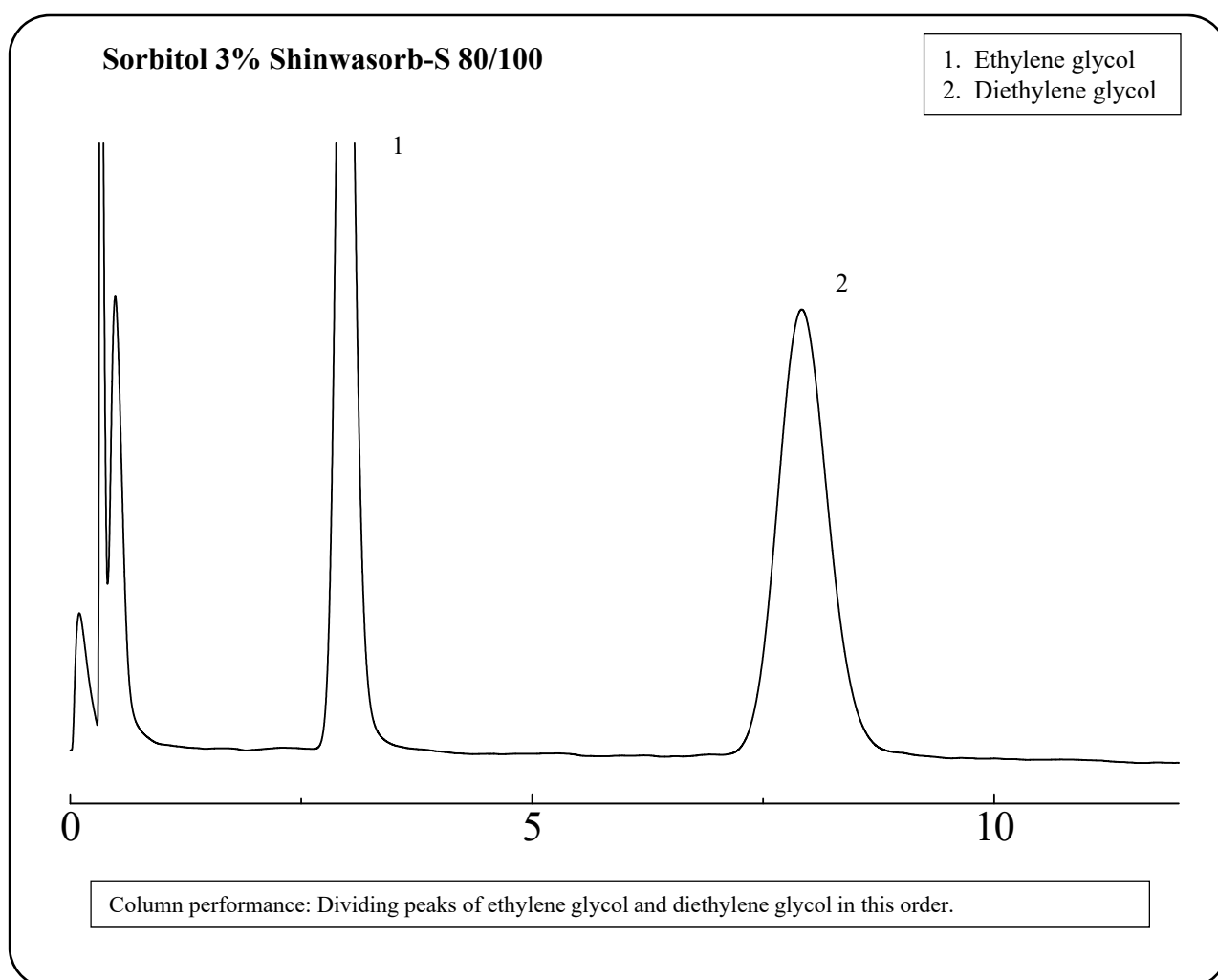
*Application*2017
November

VOL. 120

Analysis of macrogol 400 using Shinwasorb

Macrogol 400 is used for ointments, coating agents and binders.

Shown below is an analysis of macrogol 400 performed using a column packed with a Shinwasorb packing material and in accordance with the Japanese Pharmacopoeia.



Column: 1.6 m x 3.2 mm I.D. Glass
Sample: ethylene glycol, diethylene glycol
Column temp.: 160°C
Carrier gas: 47 mL/min N₂ (adjust so that the retention time of diethylene glycol is about 8 minutes.)

Sample volume: 2.0 µL
Injection port temp.: 200°C
Detector: FID 200°C

■ Packing material specifications and price ■

Product name	Weight	Price
Sorbitol 3% Shinwasorb-S 80/100	25 g	18,500 JPY

■ Packed column specifications and price ■

Product name	Column material	Dimensions	Price
Sorbitol 3% Shinwasorb-S 80/100	Glass (For GC-2014 systems)	1.6 m x 3.2 mm I.D.	54,000 JPY

Prices for glass columns for Shimadzu systems other than the GC-2014, and systems manufactured by other manufacturers will differ from that shown above. The prices shown above are applicable as of November 24th, 2017. Please contact us for pricing.



Please feel free to contact us with questions related to analyses.

Please be aware that specifications and prices are subject to change without prior notification.