

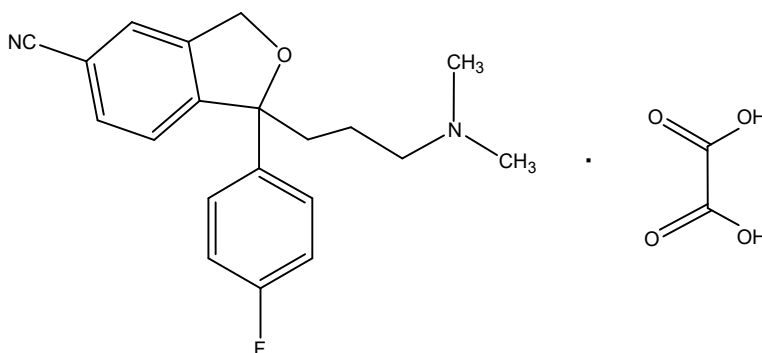
SHINWA EXPRESS

*Application*2017
December

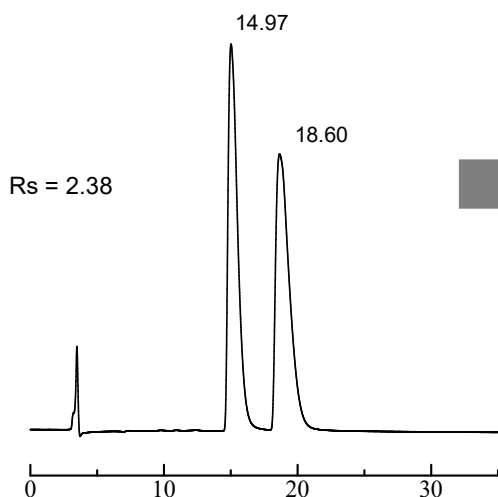
VOL. 121

Analysis of escitalopram oxalate using the ULTRON ES-OVM-3

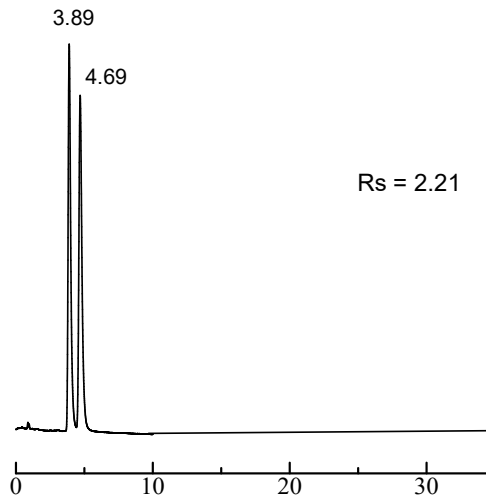
Shown below are comparative analyses of escitalopram oxalate performed using ULTRON ES-OVM 5 μ m (150 x 4.6 mm I.D.) and ULTRON ES-OVM-3 (100 x 3.0 mm I.D.) columns.



① ULTRON ES-OVM (5 μ m)
150 x 4.6 mm I.D.



② ULTRON ES-OVM-3 (3 μ m)
100 x 3.0 mm I.D.



*Resolution values will differ depending on the specifications of the system used.

Column: ULTRON ES-OVM (5 μ m)/ULTRON ES-OVM-3 (3 μ m)
Column size: 150 x 4.6 mm I.D./100 x 3.0 mm I.D.
Column temp.: 30°C
Mobile phase: 50 mM KH₂PO₄ + 0.2 N NaOH (pH 7.0)/CH₃CN = 85/15
Flow rate: 0.6 mL/min

Detection: UV-240 nm
Sample: 125 mg/L (in mobile phase)
Injection vol.: 15.0 μ L (ES-OVM, 5 μ m 150 x 4.6 mm I.D.)
0.5 μ L (ES-OVM-3, 3 μ m 100 x 3.0 mm I.D.)

**SHINWA CHEMICAL INDUSTRIES LTD.**

50-2 Kagekatsu-cho, Fushimi-ku

Kyoto 612-8307 Japan

TEL: +81-75-621-2360 FAX: +81-75-602-2660

E-mail: info@shinwa-cpc.co.jpWebsite: <http://shinwa-cpc.co.jp/en/>

Features of the ULTRON ES-OVM-3 (compared to the 5 µm column)

- Employs a 3 µm packing material for higher peak resolution and theoretical plate numbers.
- Enables significant reductions in analysis times while maintaining high theoretical plate numbers.
- Maximum operating pressure of 30 MPa.
- Can be used in LC/MS systems as well.
- Enables further improvements in performance with optimization of LC system tubing and flow cells.
- 9 column length and inner diameter combinations available.

ULTRON ES-OVM-3 line-up

Application	Semi-micro LC	Semi-micro LC Conventional LC	Conventional LC
Column dimensions Length × I.D. (mm)	50 × 2.1	50 × 3.0	50 × 4.6
	100 × 2.1	100 × 3.0	100 × 4.6
	150 × 2.1	150 × 3.0	150 × 4.6



Please feel free to contact us with questions related to analyses.
Column screening services are also available.

Please be aware that specifications are subject to change without prior notification.