

SHINWA EXPRESS

Application

2018
M a r c h

VOL. 128

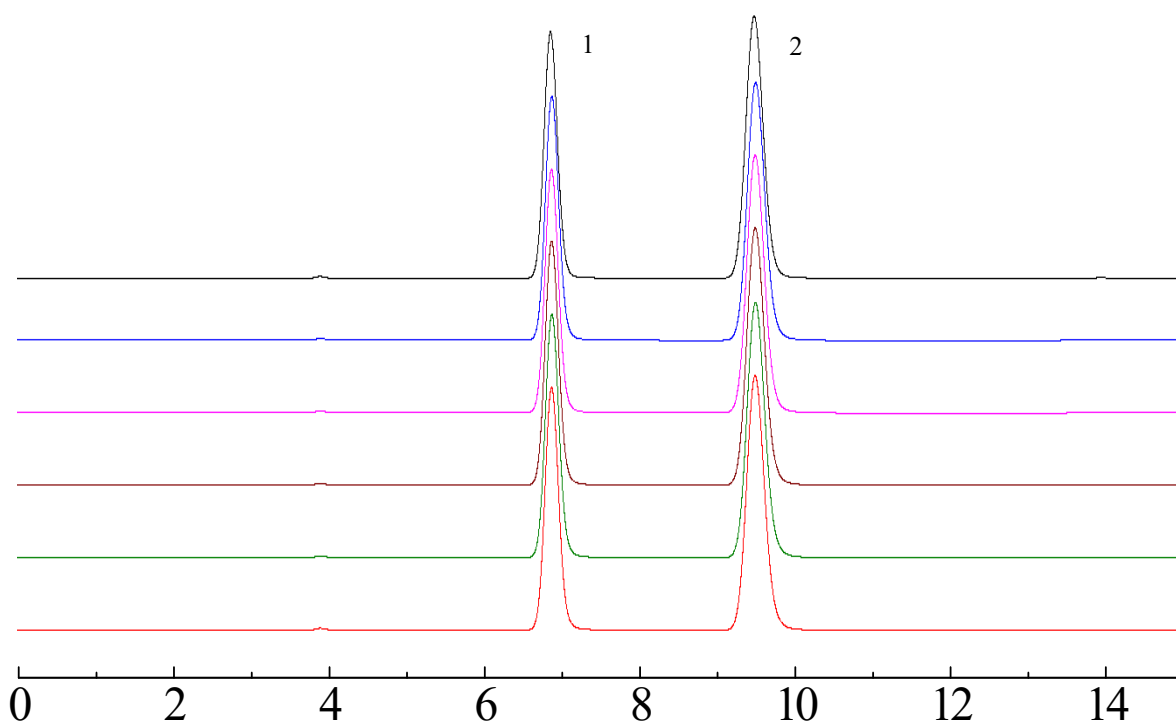
Analysis of isoflurane using Shinwasorb

~Assay~

Isoflurane is used as an anesthetic for animals. Shown below is an analysis of isoflurane performed using a column packed with a Shinwasorb packing material and in accordance with the Japanese Pharmacopoeia.

Igepal CO-880 + Ucon LB-550X 5+7.5% Shinwasorb-S 100/120

1. Isoflurane
2. Ethyl acetate



System suitability

System performance: The resolution is 6.87

(Isoflurane and ethyl acetate are eluted in this order with the resolution between these peaks being not less than 3.0.)

System repeatability: The relative standard deviation is 0.27%

(When the test is repeated 6 times, the relative standard deviation of the peak area of isoflurane is not more than 1.0%)

Column: 3.5 m x 3.0 mm I.D. Stainless steel
Sample: Isoflurane, ethyl acetate in o-xylene
Column temp.: 80°C
Injection port temp.: 200°C
Carrier gas: 37 mL/min N₂ (Adjust so that the retention time of isoflurane is about 7 minutes.)

Sample volume: 2.0 µL
Detector: FID 200°C



SHINWA CHEMICAL INDUSTRIES LTD.

50-2 Kagekatsu-cho, Fushimi-ku
Kyoto 612-8307 Japan

TEL: +81-75-621-2360 FAX: +81-75-602-2660

E-mail: info@shinwa-cpc.co.jp

Website: <http://shinwa-cpc.co.jp/en/>

~Purity test (4) Related substances~

Igepal CO-880 + Ucon LB-550X 5+7.5% Shinwasorb-S 100/120

System suitability

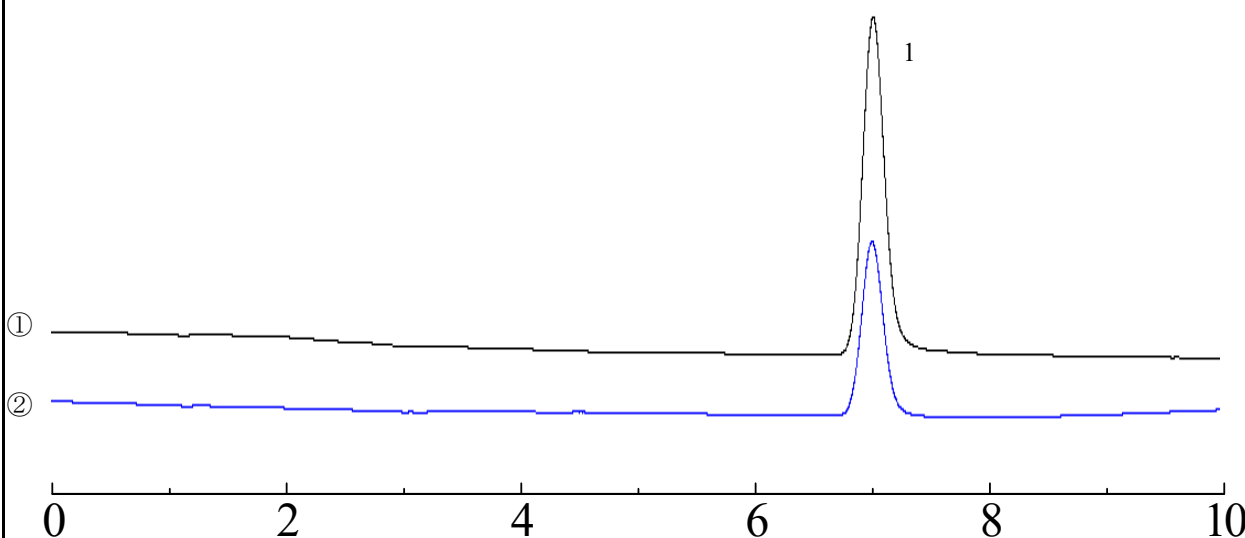
Detectability: 50.43%

(Confirm that the peak area of isoflurane obtained from 5 μ L of Solution ② is equivalent to 35 to 65% of that obtained from 5 μ L of Solution ①.)

Solution ①: The standard solution

Solution ②: Two times dilution of ①

1. Isoflurane



Column: 3.5 m x 3.0 mm I.D. Stainless steel

Sample: Isoflurane in o-xylene

Column temp.: 80°C

Injection port temp.: 200°C

Carrier gas: 37 mL/min N₂ (Adjust so that the retention time of isoflurane is about 7 minutes.)

Sample volume: 5.0 μ L

Detector: FID 200°C

■ Packing material specifications and price ■

Product name	Weight	Price
Igepal CO-880 + Ucon LB-550X 5+7.5% Shinwasorb-S 100/120	25 g	24,500 JPY

■ Packed column specifications and price ■

Product name	Column material	Dimensions	Price
Igepal CO-880 + Ucon LB-550X 5+7.5% Shinwasorb-S 100/120	Stainless steel (For GC-2014 systems)	3.5 m x 3.0 mm I.D.	83,500 JPY

Prices for glass columns for Shimadzu systems other than the GC-2014, and systems manufactured by other manufacturers will differ from that shown above. The prices shown above are applicable as of March 23rd, 2018. Please contact us for pricing.

Please feel free to contact us with questions related to analyses.

Please be aware that specifications and prices are subject to change without prior notification.