

SHINWA EXPRESS

*Application*2018
December

VOL. 144

Analysis of etofenprox using Shinwasorb

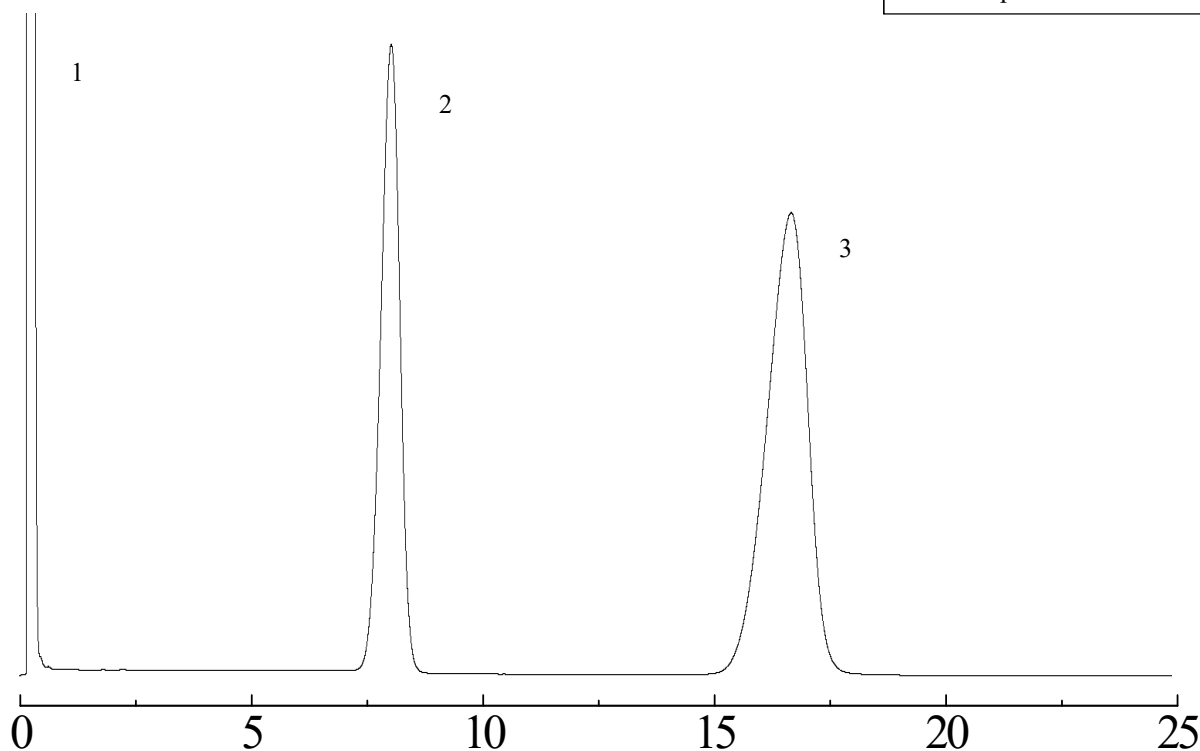
~Assay~

Etofenprox is a pyrethroid insecticide.

Shown below is an analysis of etofenprox performed using a column packed with a Shinwasorb packing material and in accordance with the Pesticide guidelines.

Silicone OV-225 2.5% Shinwasorb-U 60/80

1. Cyclohexane
2. Dicyclohexyl phthalate
3. Etofenprox

**System suitability**

System performance: The resolution between dicyclohexyl phthalate and etofenprox is 7.1.
(Dicyclohexyl phthalate and etofenprox are eluted in this order with the resolution between these peaks being not less than 6.0.)

Column: 1.1 m x 3.2 mm I.D. Glass
Sample: cyclohexane, dicyclohexyl phthalate, etofenprox
Column temp.: 240°C
Carrier gas: 37 mL/min N₂ (Adjust so that the retention time of dicyclohexyl phthalate is about 8 minutes.)

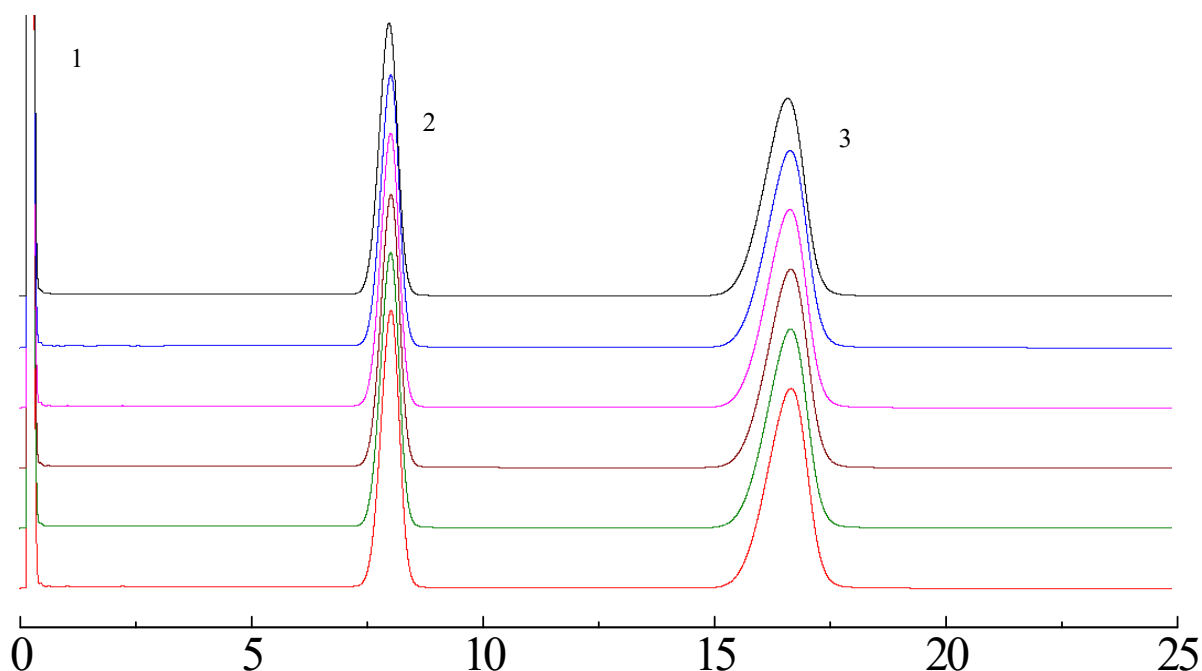
Sample volume: 3.0 µL
Detector: FID 250°C
Injection port temp.: 250°C

**SHINWA CHEMICAL INDUSTRIES LTD.**

50-2 Kagekatsu-cho, Fushimi-ku
Kyoto 612-8307 Japan
TEL: +81-75-621-2360 FAX: +81-75-602-2660
E-mail: info@shinwa-cpc.co.jp
Website: <http://shinwa-cpc.co.jp/en/>

Silicone OV-225 2.5% Shinwasorb-U 60/80

1. Cyclohexane
2. Dicyclohexyl phthalate
3. Etofenprox

**System suitability**

System repeatability: The relative standard deviation is 0.31%

(When the test is repeated 6 times, the relative standard deviation of the ratio of the peak area of etofenprox to that of dicyclohexyl phthalate is not more than 1.0%.)

Column: 1.1 m x 3.2 mm I.D. Glass
Sample: cyclohexane, dicyclohexyl phthalate, etofenprox
Column temp.: 240°C
Carrier gas: 37 mL/min N₂ (Adjust so that the retention time of dicyclohexyl phthalate is about 8 minutes.)

Sample volume: 3.0 µL
Detector: FID 250°C
Injection port temp.: 250°C

■ Packing material specifications and price ■

Product name	Weight	Price
Silicone OV-225 2.5% Shinwasorb-U 60/80	25 g	25,700 JPY

■ Packed column specifications and price ■

Product name	Column material	Dimensions	Price
Silicone OV-225 2.5% Shinwasorb-U 60/80	Glass (For GC-2014 systems)	1.1 m x 3.2 mm I.D.	61,900 JPY

Prices for glass columns for Shimadzu systems other than the GC-2014, and systems manufactured by other manufacturers will differ from that shown above. The prices shown above are applicable as of December 24th, 2018. Please contact us for pricing.

Please feel free to contact us with questions related to analyses.

Please be aware that specifications and prices are subject to change without prior notification.