

SHINWA EXPRESS

*Application*2019
January

VOL. 146

Analysis of etofenprox using Shinwasorb ~Part 2~ ~Purity (3) Related substances~

Etofenprox is a pyrethroid insecticide.

Shown below is an analysis of etofenprox performed using a column packed with a Shinwasorb packing material and in accordance with the Pesticide guidelines.

Silicone OV-225 2.5% Shinwasorb-U 60/80

System suitability

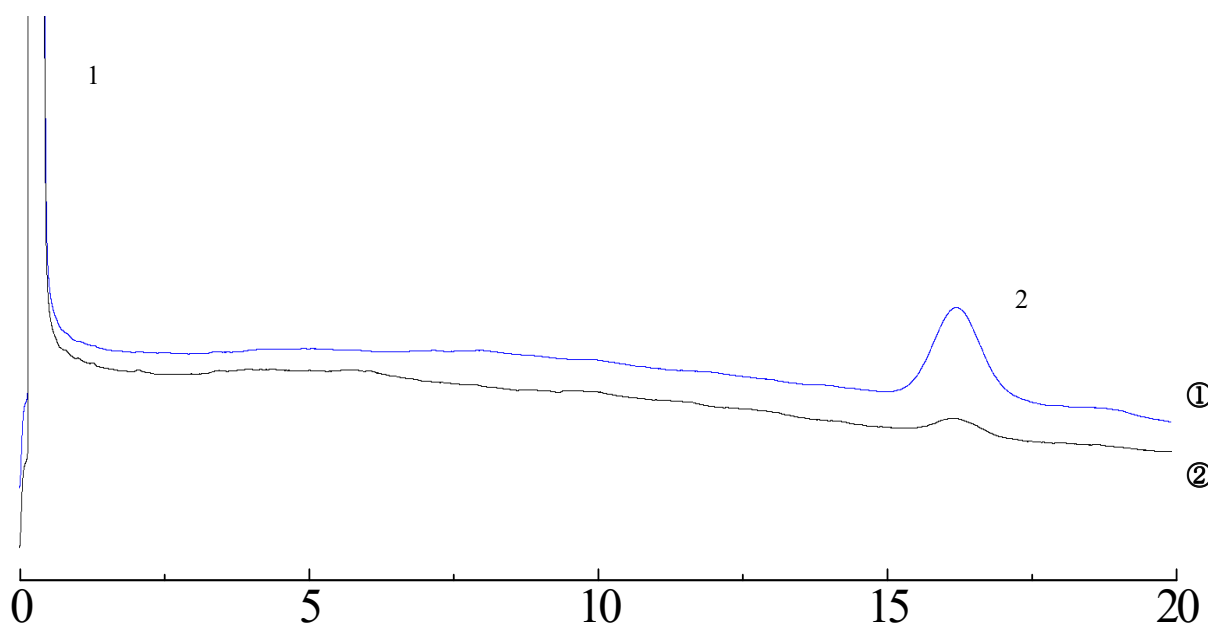
Detectability: 18.4%

(Confirm that the peak area of etofenprox obtained from 3 μ L of Solution ② is equivalent to 14 to 26% of that obtained from Solution ①.)

Solution ①: The solution for system suitability test

Solution ②: Five times dilution of ①

1. Cyclohexane
2. Etofenprox



Column: 1.1 m x 3.2 mm I.D. Glass
Sample: etofenprox in cyclohexane
Column temp.: 240°C
Carrier gas: 37 mL/min N₂

Sample volume: 3.0 μ L
Detector: FID 250°C
Injection port temp.: 250°C

**SHINWA CHEMICAL INDUSTRIES LTD.**

50-2 Kagekatsu-cho, Fushimi-ku
Kyoto 612-8307 Japan
TEL: +81-75-621-2360 FAX: +81-75-602-2660
E-mail: info@shinwa-cpc.co.jp
Website: <http://shinwa-cpc.co.jp/en/>

■ Packing material specifications and price ■

Product name	Weight	Price
Silicone OV-225 2.5% Shinwasorb-U 60/80	25 g	25,700 JPY

■ Packed column specifications and price ■

Product name	Column material	Dimensions	Price
Silicone OV-225 2.5% Shinwasorb-U 60/80	Glass (For GC-2014 systems)	1.1 m x 3.2 mm I.D.	61,900 JPY

Prices for glass columns for Shimadzu systems other than the GC-2014, and systems manufactured by other manufacturers will differ from that shown above. The prices shown above are applicable as of January 24th, 2019. Please contact us for pricing.

Please feel free to contact us with questions related to analyses.

Please be aware that specifications and prices are subject to change without prior notification.