

# SHINWA EXPRESS

*Application*2019  
February

VOL. 148

## Analysis of o-dichlorobenzene using Shinwasorb

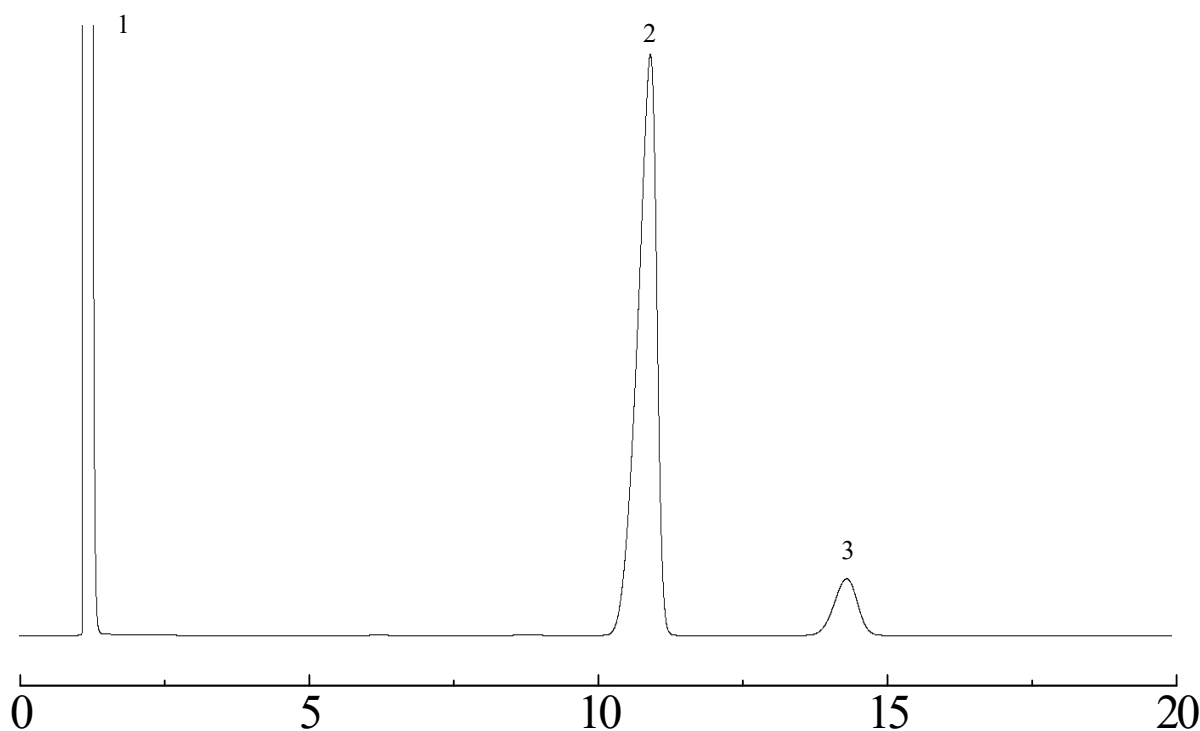
~Assay~

o-dichlorobenzene is an organochlorine insecticide component.

Shown below is an analysis of o-dichlorobenzene performed using a column packed with a Shinwasorb packing material in accordance with the Pesticide guidelines.

PEG20M-TPA 2.5% Shinwasorb-U 60/80

1. Acetone
2. o-dichlorobenzene
3. m-bromochlorobenzene

**System suitability**

System performance: The resolution between o-dichlorobenzene and m-bromochlorobenzene is 5.0.  
(o-dichlorobenzene and m-bromochlorobenzene are eluted in this order with the resolution between these peaks being not less than 3.0.)

Column: 3.1 m x 3.2 mm I.D. Glass  
Sample: o-dichlorobenzene, m-bromochlorobenzene in acetone  
Column temp.: 115°C  
Carrier gas: 39 mL/min N<sub>2</sub> (Adjust so that the retention time of o-dichlorobenzene is about 11 minutes.)

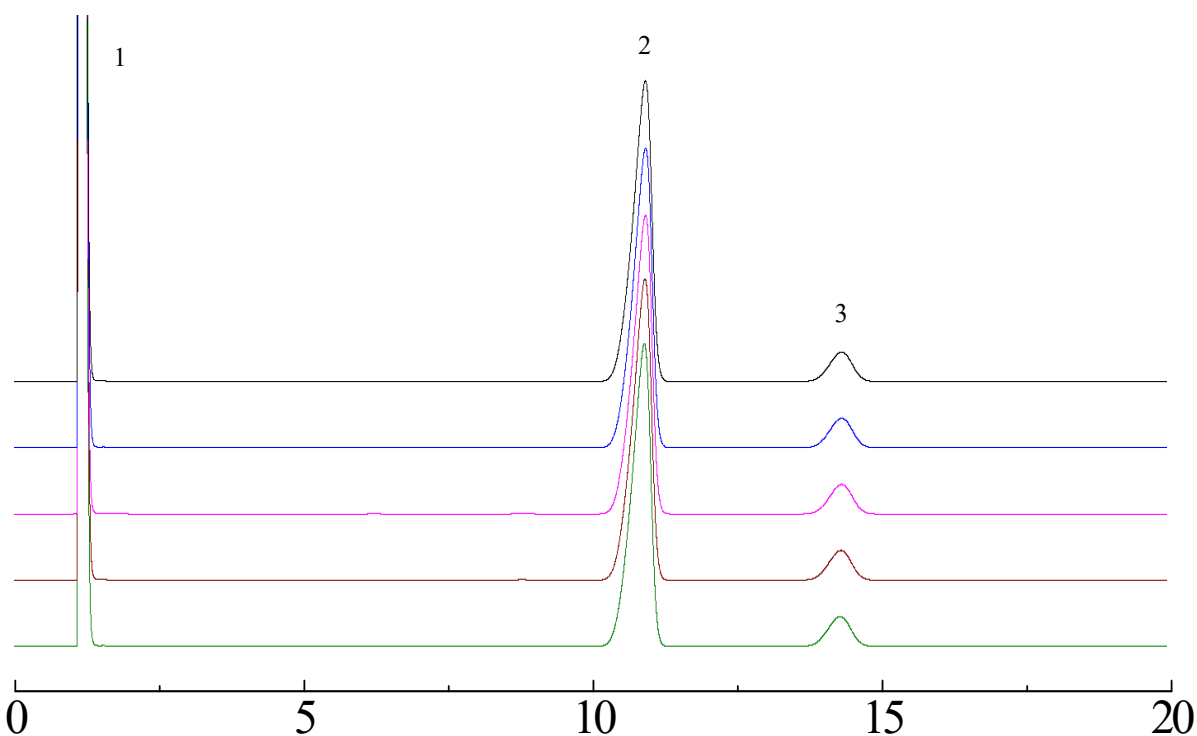
Sample volume: 2.0 µL  
Detector: FID 200°C  
Injection port temp.: 200°C

**SHINWA CHEMICAL INDUSTRIES LTD.**

50-2 Kagekatsu-cho, Fushimi-ku  
Kyoto 612-8307 Japan  
TEL: +81-75-621-2360 FAX: +81-75-602-2660  
E-mail: [info@shinwa-cpc.co.jp](mailto:info@shinwa-cpc.co.jp)  
Website: <http://shinwa-cpc.co.jp/en/>

## PEG20M-TPA 2.5% Shinwasorb-U 60/80

1. Acetone
2. o-dichlorobenzene
3. m-bromochlorobenzene



### System suitability

System repeatability: The relative standard deviation is 0.33%  
 (When the test is repeated 5 times, the relative standard deviation of the ratio of the peak area of o-dichlorobenzene to that of m-bromochlorobenzene is not more than 1.0%.)

Column:	3.1 m x 3.2 mm I.D. Glass	Sample volume:	2.0 $\mu$ L
Sample:	o-dichlorobenzene, m-bromochlorobenzene in acetone	Detector:	FID 200°C
Column temp.:	115°C	Injection port temp.:	200°C
Carrier gas:	39 mL/min N <sub>2</sub> (Adjust so that the retention time of o-dichlorobenzene is about 11 minutes.)		

### ■ Packing material specifications and price ■

Product name	Weight	Price
PEG20M-TPA 2.5% Shinwasorb-U 60/80	25 g	17,600 JPY

### ■ Packed column specifications and price ■

Product name	Column material	Dimensions	Price
PEG20M-TPA 2.5% Shinwasorb-U 60/80	Glass (For GC-2014 systems)	3.1 m x 3.2 mm I.D.	63,000 JPY

Prices for glass columns for Shimadzu systems other than the GC-2014, and systems manufactured by other manufacturers will differ from that shown above. The prices shown above are applicable as of February 24<sup>th</sup>, 2019. Please contact us for pricing.

Please feel free to contact us with questions related to analyses.

Please be aware that specifications and prices are subject to change without prior notification.