

SHINWA EXPRESS

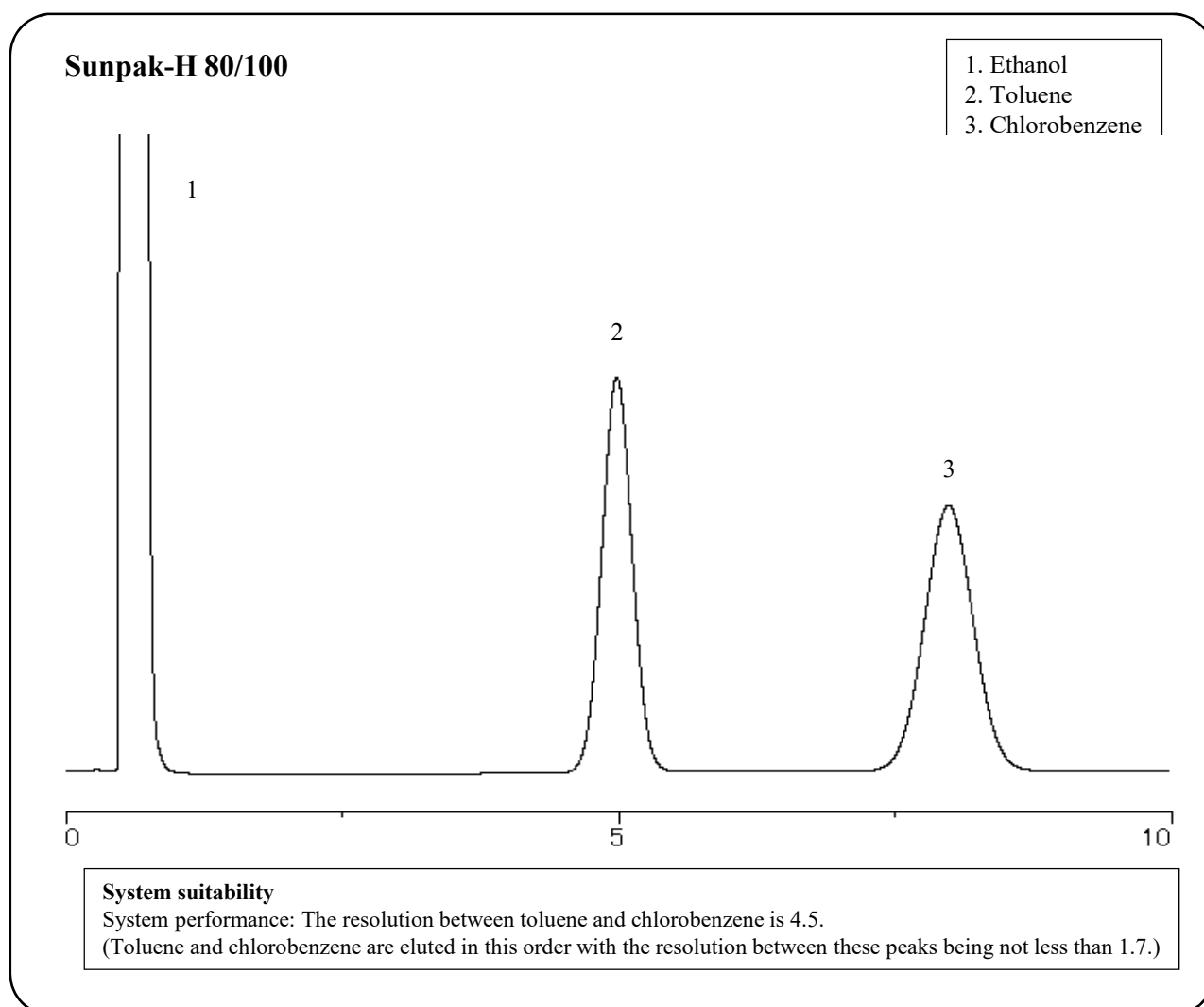
Application

2019
M a r c h

VOL. 150

Analysis of allethrin using Sunpak-H ~Part 1~ ~Purity (4) Toluene~

Shown below is an analysis of allethrin performed using a column packed with a Sunpak-H packing material in accordance with the Pesticide guidelines.



Column: 1.1 m x 3.2 mm I.D. Glass
 Sample: Ethanol, Toluene, Chlorobenzene
 Column temp.: 170°C
 Carrier gas: 37 mL/min N₂ (Adjust so that the retention time of toluene is about 5 minutes.)

Sample volume: 1.0 µL
 Detector: FID 200°C
 Injection port temp.: 200°C



SHINWA CHEMICAL INDUSTRIES LTD.

50-2 Kagekatsu-cho, Fushimi-ku
 Kyoto 612-8307 Japan
 TEL: +81-75-621-2360 FAX: +81-75-602-2660
 E-mail: info@shinwa-cpc.co.jp
 Website: <http://shinwa-cpc.co.jp/en/>

■ Packed column specifications and price ■

Product name	Column material	Dimensions	Price
Sunpak-H 80/100	Glass (For GC-2014 systems)	1.1 m x 3.2 mm I.D.	90,200 JPY

Prices for glass columns for Shimadzu systems other than the GC-2014, and systems manufactured by other manufacturers will differ from that shown above. The prices shown above are applicable as of March 24th, 2019. Please contact us for pricing.

Please feel free to contact us with questions related to analyses.

Please be aware that specifications and prices are subject to change without prior notification.