

# SHINWA EXPRESS

*Application*2019  
A p r i l

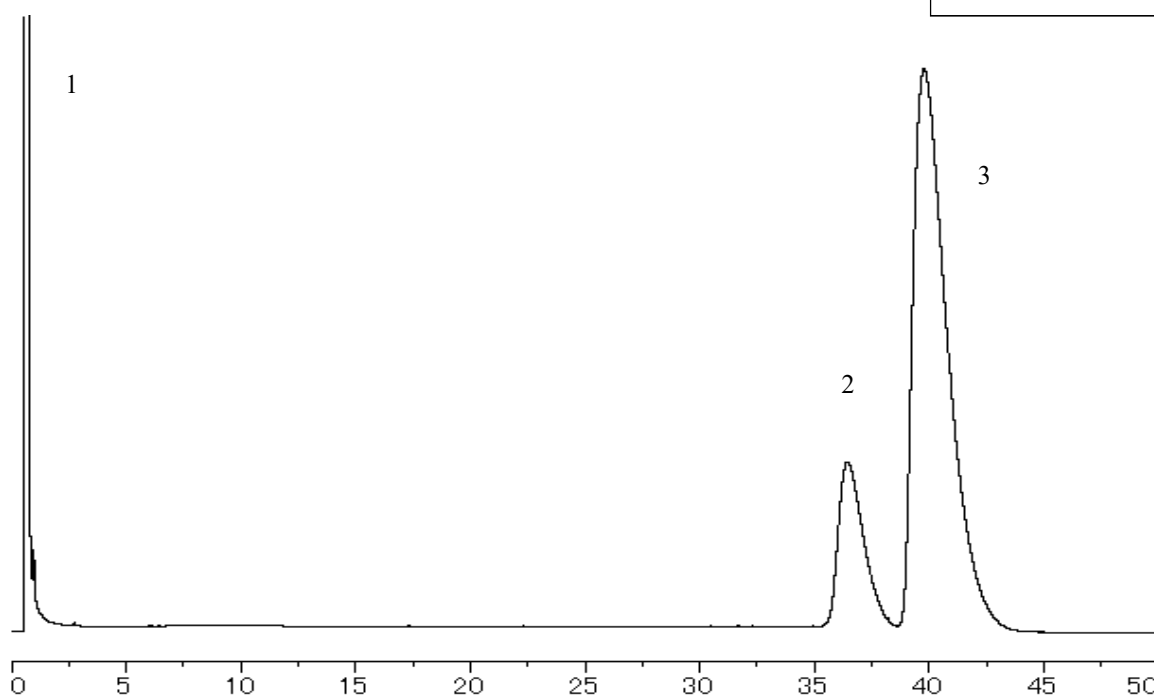
VOL. 152

## Analysis of allethrin using Shinwasorb ~Part 2~ ~Isomer ratio~

Shown below is an analysis of allethrin performed using a column packed with a Shinwasorb packing material in accordance with the Pesticide guidelines.

**Silicone DC QF-1 2.5% Shinwasorb-U 80/100**

1. Acetone  
2. cis-Allethrin  
3. trans-Allethrin

**Selection of column**

Column performance: The resolution between cis-allethrin and trans-allethrin is 1.41.

(cis-allethrin and trans-allethrin are eluted in this order with the resolution between these peaks being not less than 1.3.)

Column: 2.1 m x 3.2 mm I.D. Glass  
Sample: Acetone, cis-Allethrin, trans-Allethrin  
Column temp.: 165°C  
Carrier gas: 45 mL/min N<sub>2</sub> (Adjust so that the retention time of trans-allethrin is about 40 minutes.)

Sample volume: 1.0 µL  
Detector: FID 200°C  
Injection port temp.: 200°C

**SHINWA CHEMICAL INDUSTRIES LTD.**

50-2 Kagekatsu-cho, Fushimi-ku  
Kyoto 612-8307 Japan  
TEL: +81-75-621-2360 FAX: +81-75-602-2660  
E-mail: [info@shinwa-cpc.co.jp](mailto:info@shinwa-cpc.co.jp)  
Website: <http://shinwa-cpc.co.jp/en/>

■ Packing material specifications and price ■

Product name	Weight	Price
Silicone DC QF-1 2.5% Shinwasorb-U 80/100	25 g	16,900 JPY

■ Packed column specifications and price ■

Product name	Column material	Dimensions	Price
Silicone DC QF-1 2.5% Shinwasorb-U 80/100	Glass (For GC-2014 systems)	2.1 m x 3.2 mm I.D.	60,500 JPY

Prices for glass columns for Shimadzu systems other than the GC-2014, and systems manufactured by other manufacturers will differ from that shown above. The prices shown above are applicable as of April 24<sup>th</sup>, 2019. Please contact us for pricing.

Please feel free to contact us with questions related to analyses.

Please be aware that specifications and prices are subject to change without prior notification.