

SHINWA EXPRESS

Application

2019
M a y

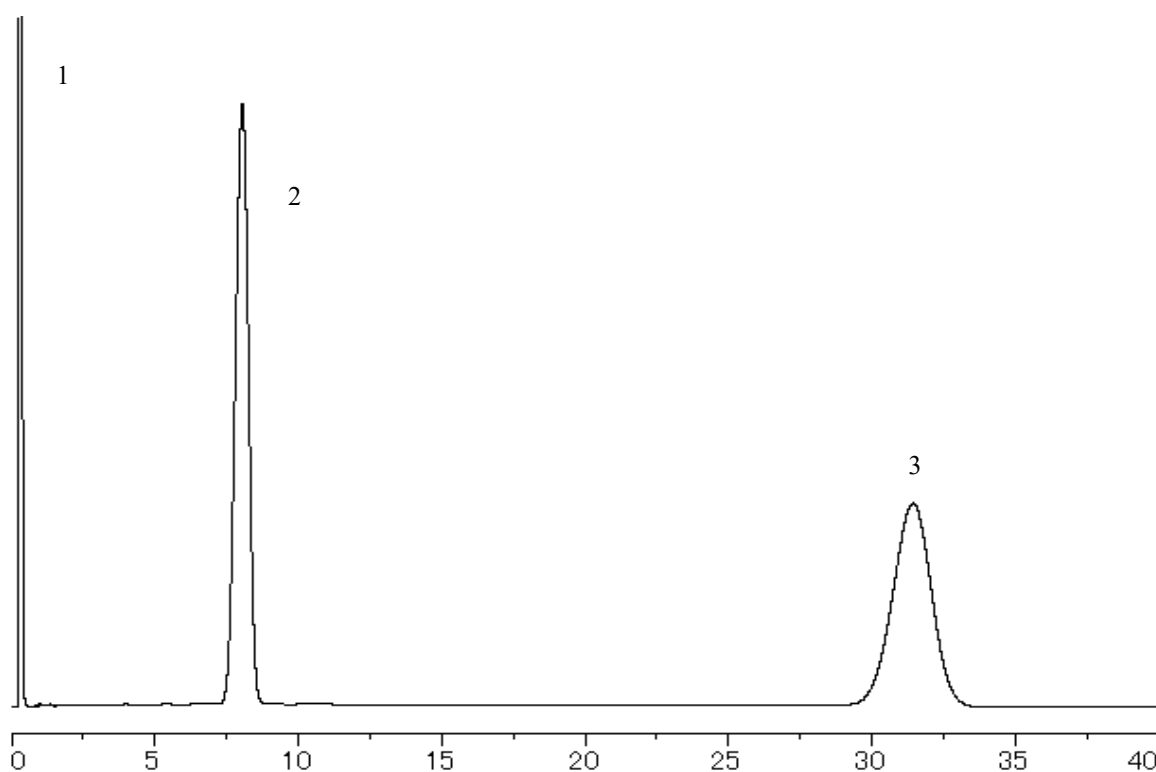
VOL. 154

Analysis of allethrin using Shinwasorb ~Part 3~ ~Assay~

Shown below is an analysis of allethrin performed using a column packed with a Shinwasorb packing material in accordance with the Pesticide guidelines.

Diethyleneglycol Succinate (DEGS) 2.5%
Shinwasorb-U 80/100

1. Acetone
2. Allethrin
3. Di(2-ethylhexyl) phthalate



Selection of column

Column performance: The resolution between allethrin and di(2-ethylhexyl) phthalate is 14.2.
(Allethrin and di(2-ethylhexyl) phthalate are eluted in this order with the resolution between these peaks being not less than 5.0.)

Column: 1.1 m x 3.2 mm I.D. Glass
Sample: Acetone, Allethrin, Di(2-ethylhexyl) phthalate
Column temp.: 200°C
Carrier gas: 36 mL/min N₂ (Adjust so that the retention time of allethrin is about 8 minutes.)

Sample volume: 1.0 µL
Detector: FID 230°C
Injection port temp.: 230°C



SHINWA CHEMICAL INDUSTRIES LTD.

50-2 Kagekatsu-cho, Fushimi-ku
Kyoto 612-8307 Japan
TEL: +81-75-621-2360 FAX: +81-75-602-2660
E-mail: info@shinwa-cpc.co.jp
Website: <http://shinwa-cpc.co.jp/en/>

■ Packing material specifications and price ■

Product name	Weight	Price
Diethyleneglycol Succinate (DEGS) 2.5% Shinwasorb-U 80/100	25 g	16,900 JPY

■ Packed column specifications and price ■

Product name	Column material	Dimensions	Price
Diethyleneglycol Succinate (DEGS) 2.5% Shinwasorb-U 80/100	Glass (For GC-2014 systems)	1.1 m x 3.2 mm I.D.	49,100 JPY

Prices for glass columns for Shimadzu systems other than the GC-2014, and systems manufactured by other manufacturers will differ from that shown above. The prices shown above are applicable as of May 24th, 2019. Please contact us for pricing.

Please feel free to contact us with questions related to analyses.

Please be aware that specifications and prices are subject to change without prior notification.