

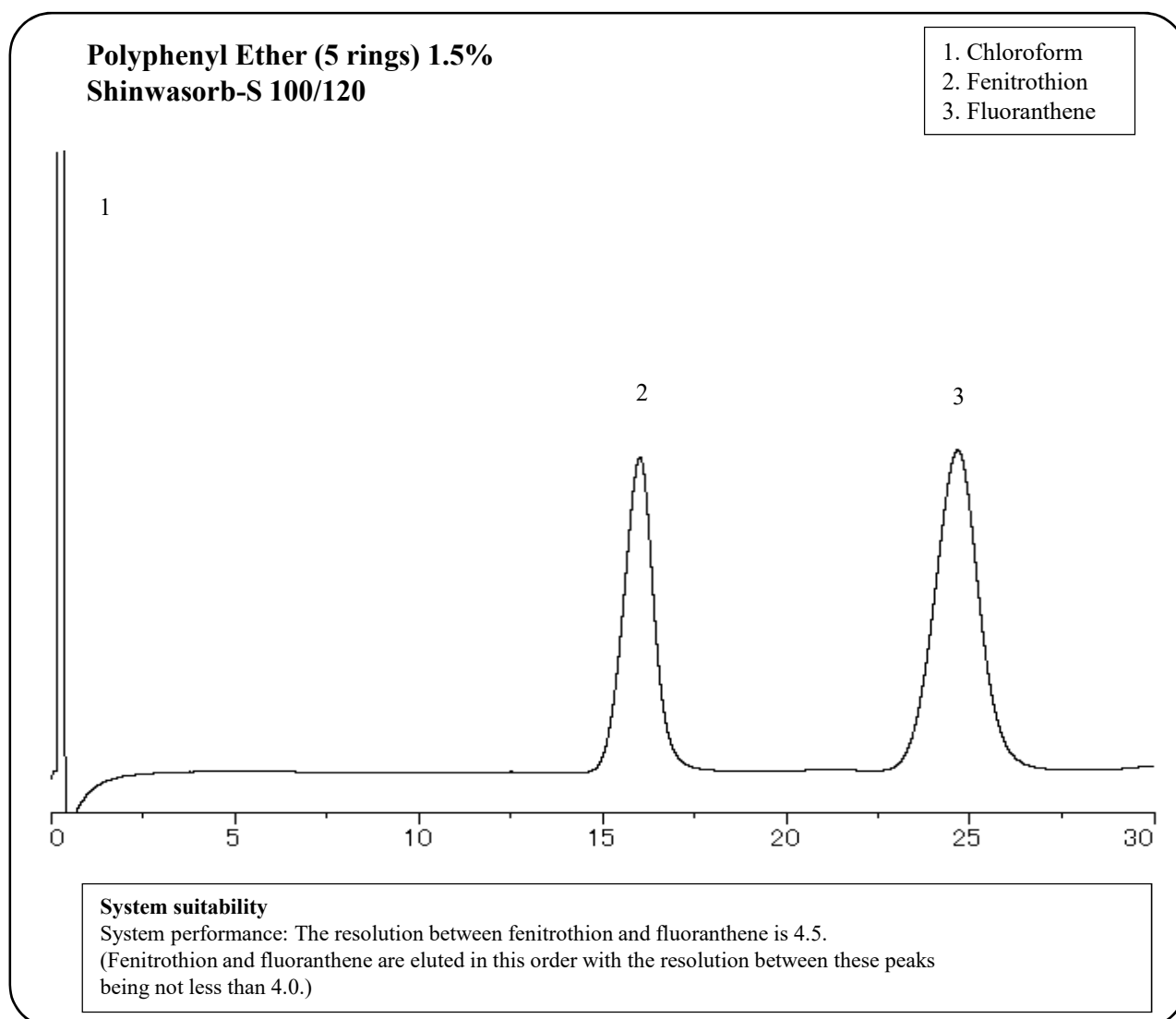
GC Packed column

<h1>SHINWA EXPRESS</h1>	<i>Application</i>	2019
		J u l y

Analysis of fenitrothion using Shinwasorb

~Assay~

Fenitrothion is an organophosphorus insecticide. Shown below is an analysis of fenitrothion performed using a column packed with a Shinwasorb packing material in accordance with the Pesticide guidelines.



Column:	1.1 m x 3.2 mm I.D. Glass	Sample volume:	2.0 μ L
Sample:	fenitrothion, fluoranthene in chloroform	Detector:	FID 230°C
Column temp.:	195°C	Injection port temp.:	230°C
Carrier gas:	55 mL/min N ₂ (Adjust so that the retention time of fenitrothion is about 16 minutes.)		

■ Packing material specifications and price ■

Product name	Weight	Price
Polyphenyl Ether (5 rings) 1.5% Shinwasorb-S 100/120	25 g	26,400 JPY

■ Packed column specifications and price ■

Product name	Column material	Dimensions	Price
Polyphenyl Ether (5 rings) 1.5% Shinwasorb-S 100/120	Glass (For GC-2014 systems)	1.1 m x 3.2 mm I.D.	58,600 JPY

Prices for glass columns for Shimadzu systems other than the GC-2014, and systems manufactured by other manufacturers will differ from that shown above. The prices shown above are applicable as of July 24th, 2019. Please contact us for pricing.

Please feel free to contact us with questions related to analyses.

Please be aware that specifications and prices are subject to change without prior notification.