

GC Packed column

<h1>SHINWA EXPRESS</h1>	<i>Application</i>	2019
		August
		VOL. 160

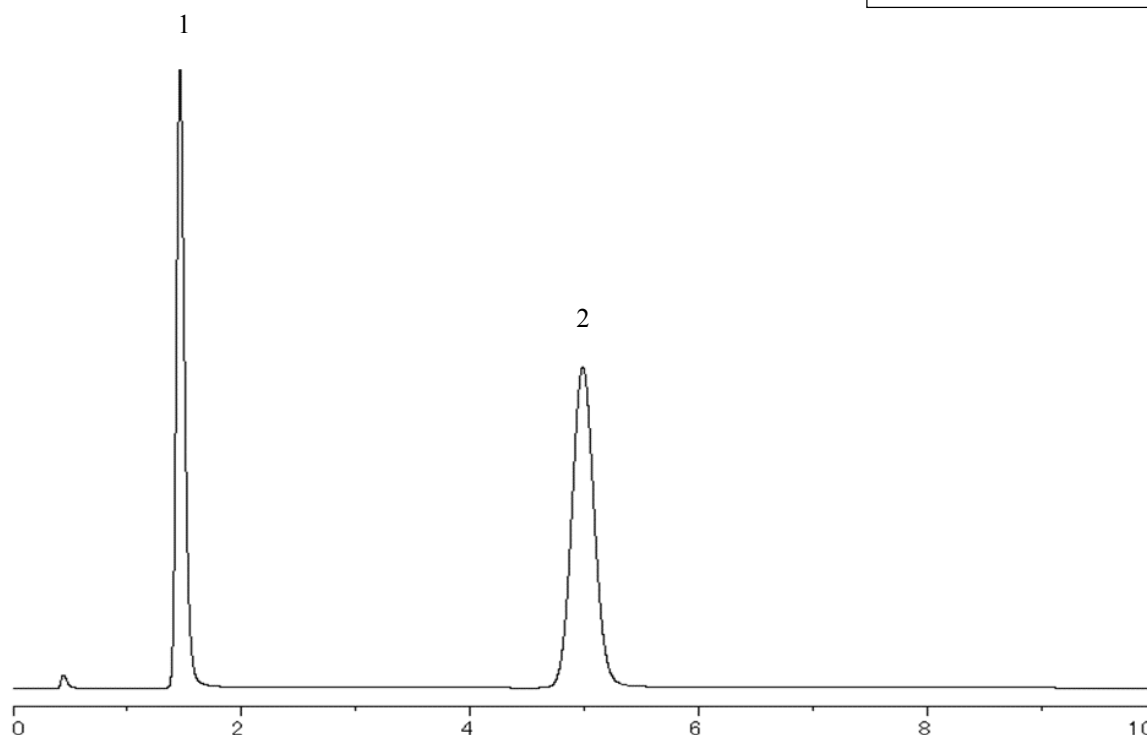
Analysis of dichlorvos using Shinwasorb

~Assay~

Dichlorvos is an organophosphorus insecticide.
Shown below is an analysis of dichlorvos performed using a column packed with a Shinwasorb packing material in accordance with the Pesticide guidelines.

Silicone OV-225 1% Shinwasorb-U 60/80

1. Dichlorvos
2. Tributyl phosphate

**System suitability**

System performance: The resolution between dichlorvos and tributyl phosphate is 14.4.
(Dichlorvos and tributyl phosphate are eluted in this order with the resolution between these peaks being not less than 4.0.)

Column: 2.1 m x 3.2 mm I.D. Glass
Sample: dichlorvos, tributyl phosphate in hexane
Column temp.: 170°C
Carrier gas: 50 mL/min N₂ (Adjust so that the retention time of tributyl phosphate is about 5 minutes.)

Sample volume: 2.0 µL
Detector: FPD 200°C
Injection port temp.: 200°C


SHINWA CHEMICAL INDUSTRIES LTD.

50-2 Kagekatsu-cho, Fushimi-ku
Kyoto 612-8307 Japan
TEL: +81-75-621-2360 FAX: +81-75-602-2660
E-mail: info@shinwa-cpc.co.jp
Website: <http://shinwa-cpc.co.jp/en/>

■ Packing material specifications and price ■

Product name	Weight	Price
Silicone OV-225 1% Shinwasorb-U 60/80	25 g	25,700 JPY

■ Packed column specifications and price ■

Product name	Column material	Dimensions	Price
Silicone OV-225 1% Shinwasorb-U 60/80	Glass (For GC-2014 systems)	2.1 m x 3.2 mm I.D.	69,300 JPY

Prices for glass columns for Shimadzu systems other than the GC-2014, and systems manufactured by other manufacturers will differ from that shown above. The prices shown above are applicable as of August 23th, 2019. Please contact us for pricing.

Please feel free to contact us with questions related to analyses.

Please be aware that specifications and prices are subject to change without prior notification.