

## GC Packed column

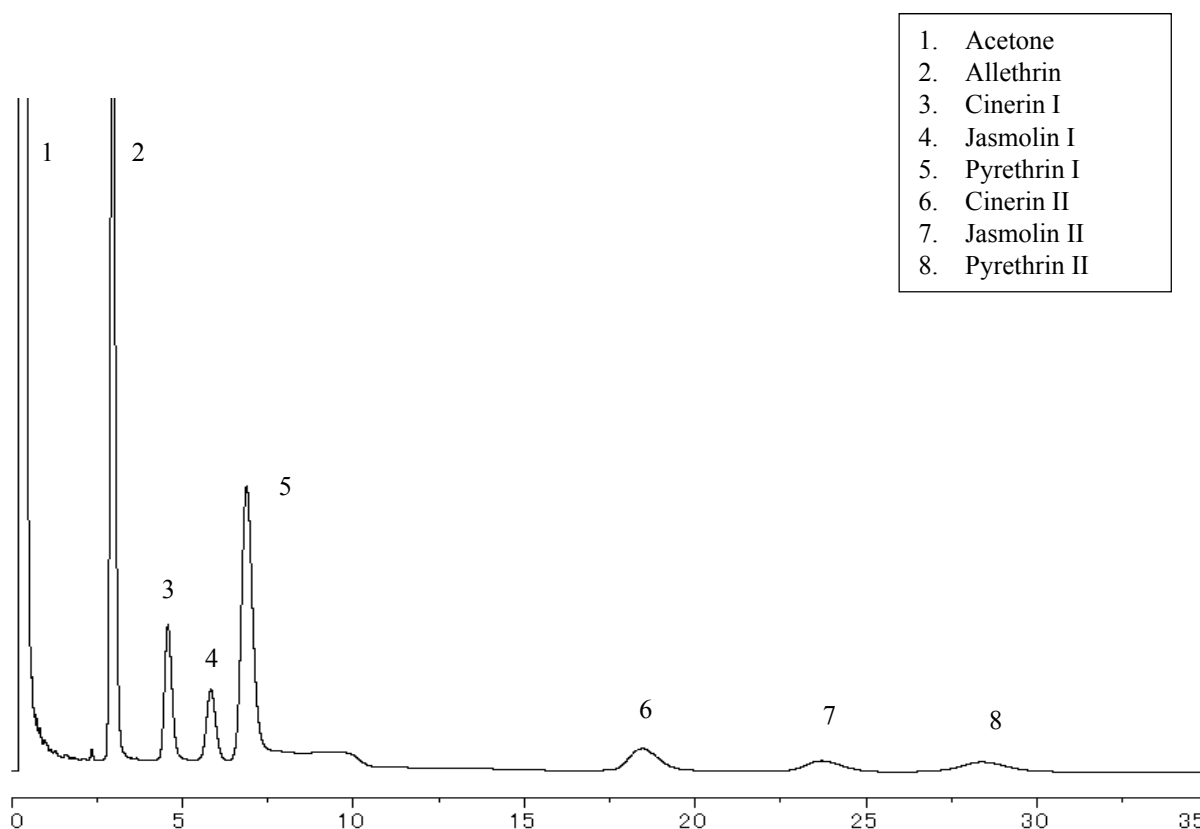
<h1>SHINWA EXPRESS</h1>	<i>Application</i>	2019 September
		VOL. 162

## Analysis of pyrethrum extract using Shinwasorb

Pyrethrum extract is a pyrethroid insecticide.

Shown below is an analysis of pyrethrum extract using a column packed with a Shinwasorb packing material in accordance with the Pesticide guidelines.

### Silicone OV-17 1% Shinwasorb-S 80/100



#### System suitability

System performance: The resolution between allethrin and cinerin I is 4.9.

(Allethrin and cinerin I are eluted in this order with the resolution between these peaks being not less than 3.0.)

Column: 1.1 m x 3.2 mm I.D. Glass

Sample: Allethrin, Pyrethrins Standard (Cinerin I • II, Jasmolin I • II, Pyrethrin I • II) in Acetone

Column temp.: 205°C

Carrier gas: 35 mL/min N<sub>2</sub> (Adjust so that the retention time of Allethrin is about 3 minutes.)

Sample volume: 1.0 µL

Detector: FPD 230°C

Injection port temp.: 230°C



**SHINWA CHEMICAL INDUSTRIES LTD.**

50-2 Kagekatsu-cho, Fushimi-ku  
Kyoto 612-8307 Japan

TEL: +81-75-621-2360 FAX: +81-75-602-2660

E-mail: [info@shinwa-cpc.co.jp](mailto:info@shinwa-cpc.co.jp)

Website: <http://shinwa-cpc.co.jp/en/>

■ Packing material specifications and price ■

Product name	Weight	Price
Silicone OV-17 1% Shinwasorb-S 80/100	25 g	22,400 JPY

■ Packed column specifications and price ■

Product name	Column material	Dimensions	Price
Silicone OV-17 1% Shinwasorb-S 80/100	Glass (For GC-2014 systems)	1.1 m x 3.2 mm I.D.	58,600 JPY

Prices for glass columns for Shimadzu systems other than the GC-2014, and systems manufactured by other manufacturers will differ from that shown above. The prices shown above are applicable as of September 26<sup>th</sup>, 2019. Please contact us for pricing.

Please feel free to contact us with questions related to analyses.

Please be aware that specifications and prices are subject to change without prior notification.