

SHINWA EXPRESS

Application

VOL. 164

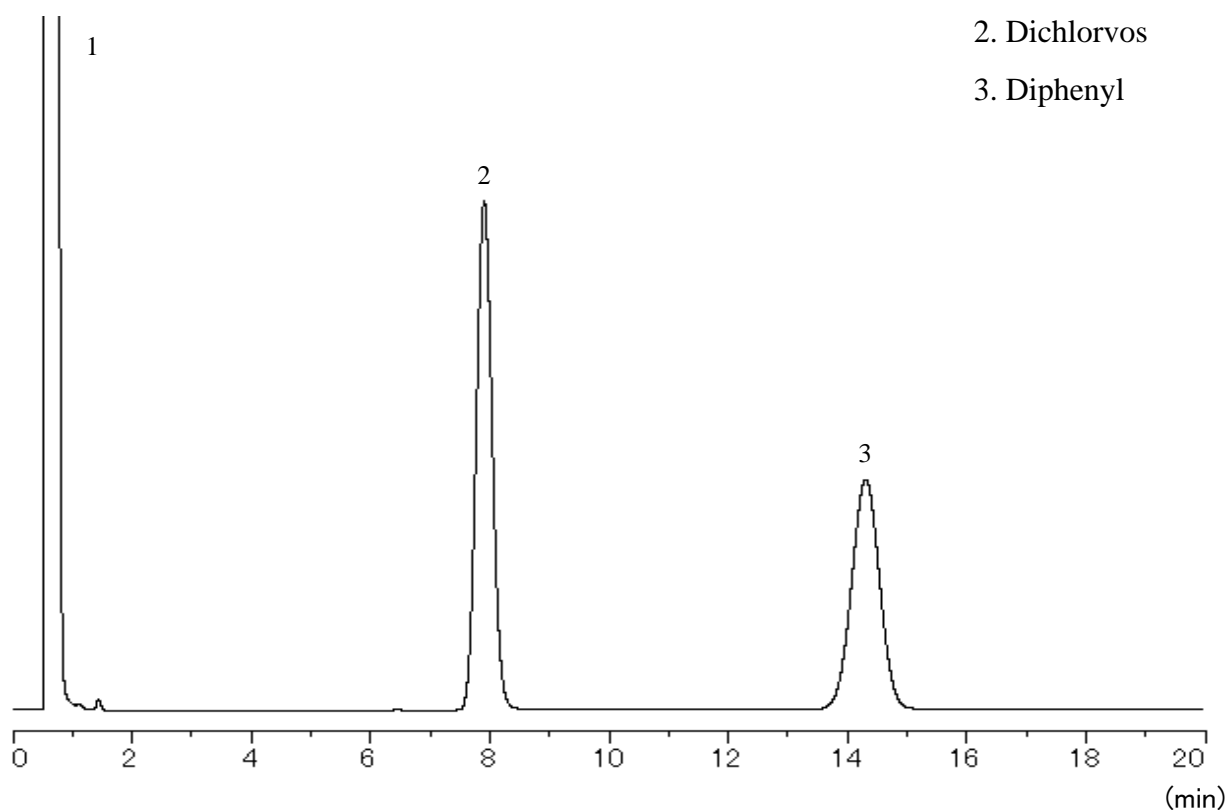
Analysis of dichlorvos resin strip using Shinwasorb

~Assay~

Shown below is an analysis of dichlorvos resin strip performed using a column packed with a Shinwasorb packing material in accordance with the Pesticide guidelines.

Silicone OV-11 10% Shinwasorb-U 60/80

1. Acetone
2. Dichlorvos
3. Diphenyl



System suitability

System performance: The resolution between dichlorvos and diphenyl is 9.4.

(Dichlorvos and diphenyl are eluted in this order with the resolution between these peaks being not less than 3.0.)

Column: 2.1 m x 3.2 mm I.D. Glass

Sample volume: 3.0 μ L

Sample: Dichlorvos, Diphenyl in Acetone

Detector: FID 230°C

Column temp.: 170°C

Injection port temp.: 230°C

Carrier gas: 35 mL/min N₂ (Adjust so that the retention time of dichlorvos is about 8 minutes.)



SHINWA CHEMICAL INDUSTRIES LTD.

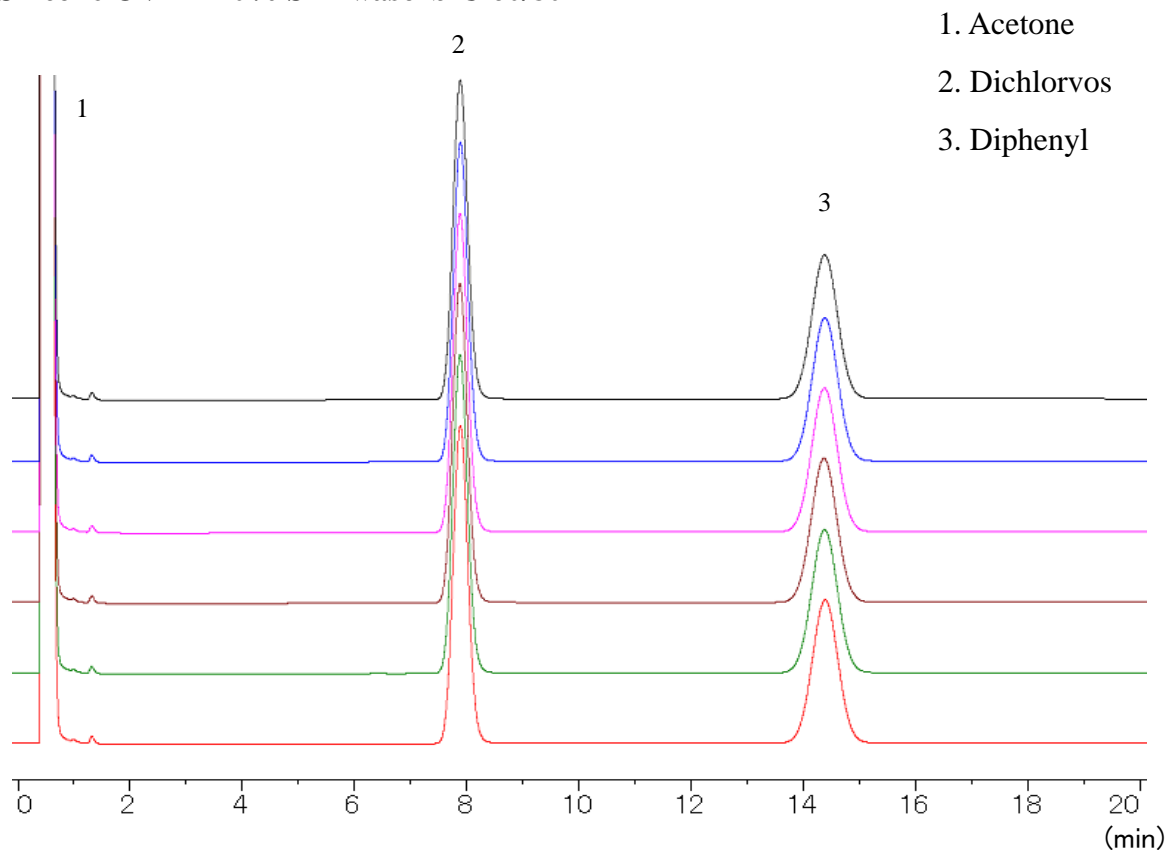
50-2 Kagekatsu-cho, Fushimi-ku
Kyoto 612-8307 Japan

TEL: +81-75-621-2360 FAX: +81-75-602-2660

E-mail: info@shinwa-cpc.co.jp

Website: <https://shinwa-cpc.co.jp/en/>

Silicone OV-11 10% Shinwasorb-U 60/80



System suitability

System repeatability: The relative standard deviation is 0.21%

(When the test is repeated 6 times, the relative standard deviation of the ratio of the peak area of dichlorvos to that of diphenyl is not more than 2.0%.)

Column: 2.1 m x 3.2 mm I.D. Glass

Sample volume: 3.0 μ L

Sample: dichlorvos, diphenyl in Acetone

Detector: FID 230°C

Column temp.: 170°C

Injection port temp.: 230°C

Carrier gas: 35 mL/min N_2 (Adjust so that the retention time of dichlorvos is about 8 minutes.)

Please feel free to contact us with questions related to analyses.

Please be aware that specifications and prices are subject to change without prior notification.