

# SHINWA EXPRESS

Application

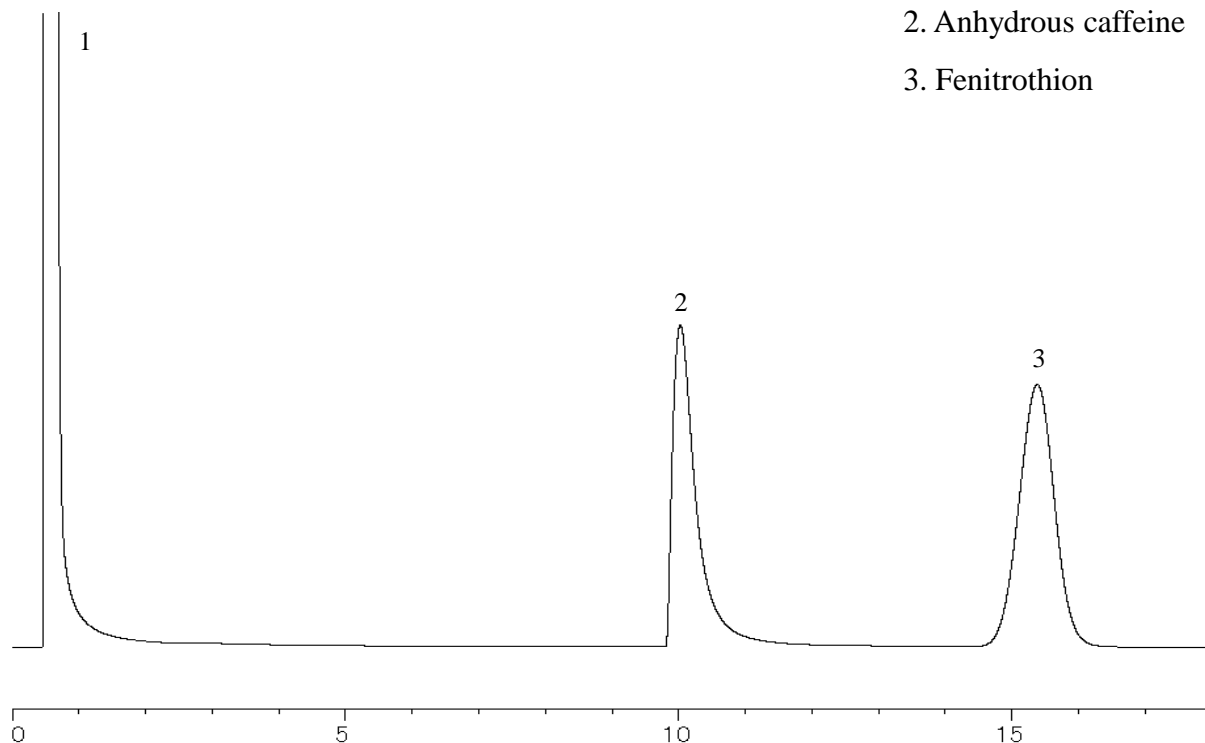
VOL. 168

## Analysis of Fenitrothion Emulsifiable Concentrate using Shinwasorb

~Assay~

Shown below is an analysis of Fenitrothion Emulsifiable Concentrate performed using a column packed with a Shinwasorb packing material in accordance with the Pesticide guidelines.

### Silicone OV-210 3% Shinwasorb-S 80/100



#### Selection of column

Column performance: The resolution between Anhydrous caffeine and Fenitrothion is 5.5.

(Anhydrous caffeine and Fenitrothion are eluted in this order with the resolution between these peaks being not less than 4.0.)

Column: 2.1 m x 3.2 mm I.D. Glass

Sample: Anhydrous caffeine, Fenitrothion in Acetone

Column temp.: 175°C

Carrier gas: 51 mL/min N<sub>2</sub> (Adjust so that the retention time of Anhydrous caffeine is about 10 minutes.)

Sample volume: 2.0 µL

Detector: FID 230°C

Injection port temp.: 230°C



SHINWA CHEMICAL INDUSTRIES LTD.

50-2 Kagekatsu-cho, Fushimi-ku  
Kyoto 612-8307 Japan

TEL: +81-75-621-2360 FAX: +81-75-602-2660

E-mail: info@shinwa-cpc.co.jp

Website: <https://shinwa-cpc.co.jp/en/>