

SHINWA EXPRESS

Application

VOL. 178

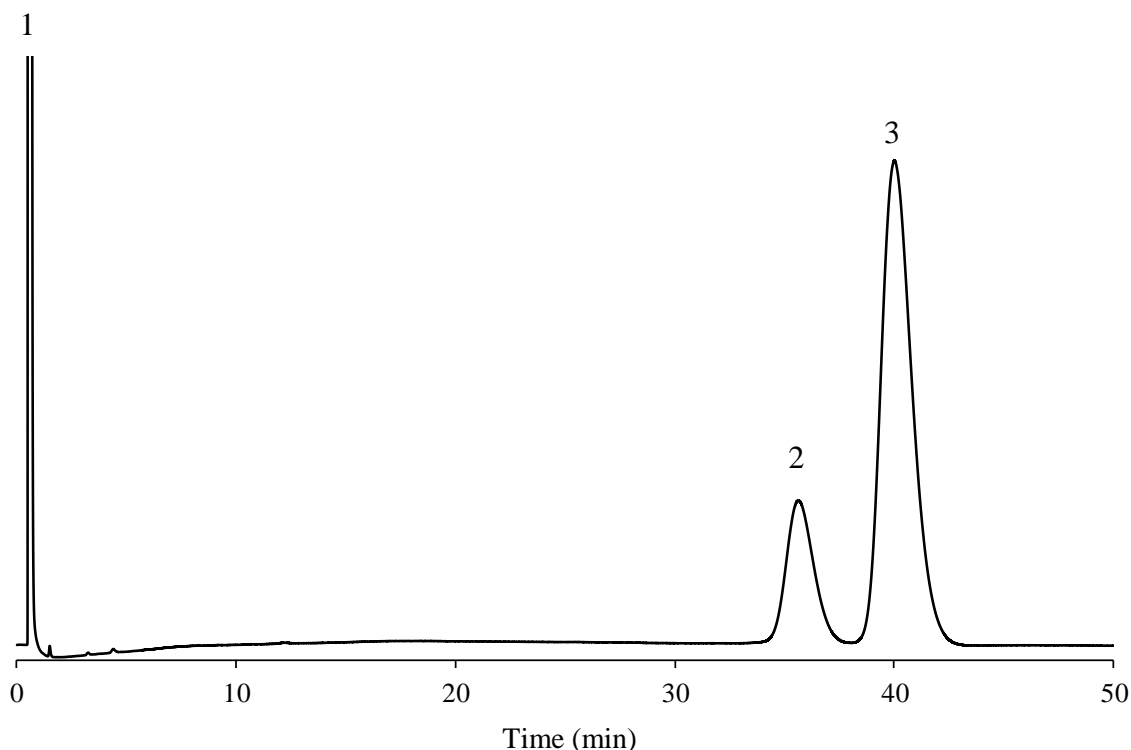
Analysis of Phenothrin using Shinwasorb ~Part 1~

~ Isomer Ratio ~

Shown below is an analysis of phenothrin performed using a column packed with a Shinwasorb packing material in accordance with the Pesticide guidelines.

Silicone DC QF-1 2.5% Shinwasorb-S 80/100

1. Acetone
2. Phenothrin
3. Phenothrin



Selection of column

Column performance: The resolution between phenothrin isomers is 1.77.

(Phenothrin isomers are eluted in this order with the resolution between these peaks being not less than 1.3.)

Column: 2.0 m x 3.0 mm I.D. Glass

Sample: Phenothrin in acetone

Column temp.: 180°C

Carrier gas: 50 mL/min N₂ (Adjusted so that the retention time of 3. Phenothrin is about 40 minutes)

Sample volume: 1.0 µL

Detector: FID 230°C

Injection port temp.: 230°C



SHINWA CHEMICAL INDUSTRIES LTD.

50-2 Kagekatsu-cho, Fushimi-ku
 Kyoto 612-8307 Japan
 TEL: +81-75-621-2360 FAX: +81-75-602-2660
 E-mail: info@shinwa-cpc.co.jp
 Website: <https://shinwa-cpc.co.jp/en/>