

SHINWA EXPRESS

Application

VOL. 180

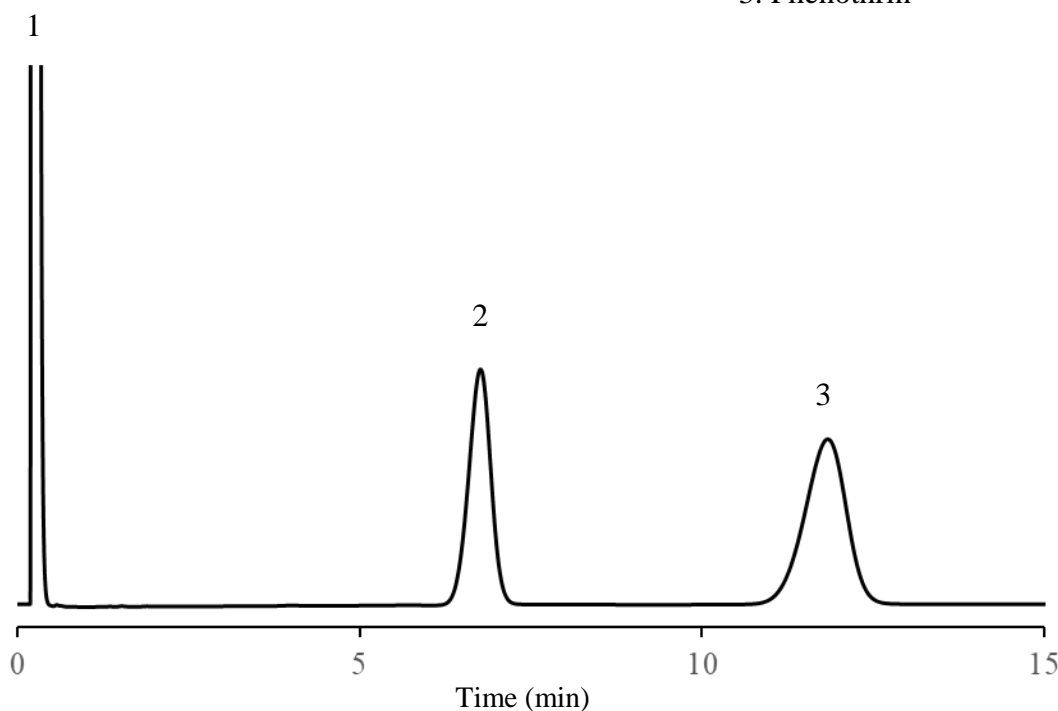
Analysis of Phenothrin using Shinwasorb ~Part 2~

~ Assay ~

Shown below is an analysis of phenothrin performed using a column packed with a Shinwasorb packing material in accordance with the Pesticide guidelines.

Polyethyleneglycol 20M (PEG20M) 1% Shinwasorb-S 80/100

1. Acetone
2. Di(2-ethylhexyl) phthalate
3. Phenothrin



Selection of column

Column performance: The resolution between di(2-ethylhexyl) phthalate and phenothrin is 5.85.
(Di(2-ethylhexyl) phthalate and phenothrin are eluted in this order with the resolution between these peaks being not less than 4.0.)

| | | | |
|---------------|---|-----------------------|-------------|
| Column: | 1.0 m x 3.0 mm I.D. Glass | Sample volume: | 1.0 μ L |
| Sample: | Phenothrin, Di(2-ethylhexyl) phthalate in acetone | Detector: | FID 230°C |
| Column temp.: | 220°C | Injection port temp.: | 230°C |
| Carrier gas: | 43 mL/min N ₂ (Adjusted so that the retention time of phenothrin is about 12 minutes.) | | |


SHINWA CHEMICAL INDUSTRIES LTD.

50-2 Kagekatsu-cho, Fushimi-ku
 Kyoto 612-8307 Japan
 TEL: +81-75-621-2360 FAX: +81-75-602-2660
 E-mail: info@shinwa-cpc.co.jp
 Website: <https://shinwa-cpc.co.jp/en/>