

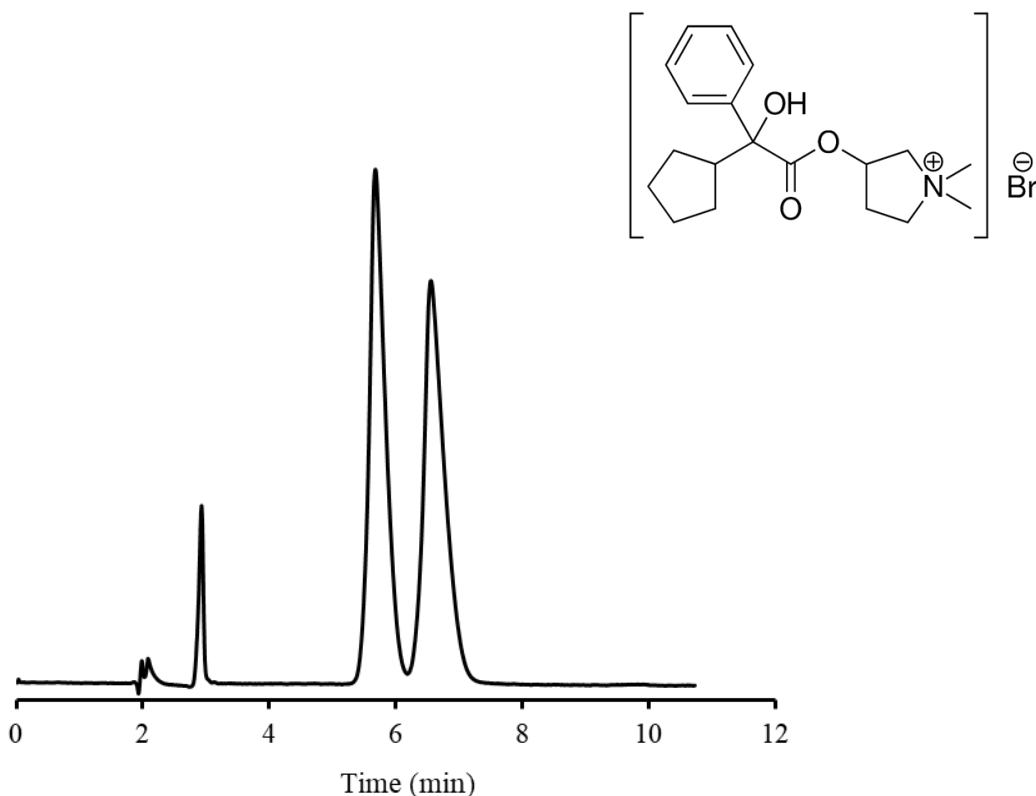
SHINWA EXPRESS

Application

VOL. 181

Analysis of Glycopyrronium Bromide using the ULTRON ES-OVM

Glycopyrronium Bromide (Anticholinergics)



Column: ULTRON ES-OVM (5 μ m)
 Column size: 150 mm L x 4.6 mm I.D.
 Mobile phase: 20 mM $\text{KH}_2\text{PO}_4 + \text{K}_2\text{HPO}_4$ (pH 5.5)/ $\text{C}_2\text{H}_5\text{OH} = 95/5$
 Flow rate: 1.0 mL/min

Column temp.: 25°C
 Detection: UV-220 nm
 Sample: 0.5 mg/mL
 Injection vol.: 2 μ L

● Features of the ULTRON ES-OVM

1. Particularly effective for separation of chiral compounds.
2. Employs a highly denaturation resistant protein ligand* (ovomuroid) as stationary phase.
3. Displays a wide range of chiral recognition.
4. No sample pretreatment required for chiral separations. (Blood plasma samples can be analyzed without pretreatment.)
5. Can be used for reversed-phase analyses.
6. Trace analyses possible (several nanograms).

*Ligand: A substance that binds selectively with a specific receptor.



SHINWA CHEMICAL INDUSTRIES LTD.

50-2 Kagekatsu-cho, Fushimi-ku
 Kyoto 612-8307 Japan
 TEL: +81-75-621-2360 FAX: +81-75-602-2660
 E-mail: info@shinwa-cpc.co.jp
 Website: <https://shinwa-cpc.co.jp/en/>

■ Analytical column specifications ■

Product name	Particle size (μm)	Column dimensions Length x I.D. (mm)
ULTRON ES-OVM	3	50×2.1
		50×3.0
		50×4.6
		100×2.1
		100×3.0
		100×4.6
		150×2.1
		150×3.0
		150×4.6
		200×2.1
		200×4.6
		250×2.1
		250×4.6
		ULTRON ES-OVM-C
150×4.6		
150×6.0		
150×4.6		
150×4.6		
ULTRON ES-OVM-E		150×4.6
ULTRON ES-OVM.G		10×4.0
ULTRON ES-OVM.G with Coupler		10×4.0
ULTRON ES-OVM		250×4.6
ULTRON ES-OVM Prep	10	250×20.0
ULTRON ES-OVM Prep.G		15×8.0
ULTRON ES-OVM (Two Guard Cartridges)	3	5×2.0
	5	5×2.0
		10×4.6
Holder for Guard Cartridge (with Coupler)	-	For 5×2.0 mm column
		For 10×4.6 mm column

● ULTRON ES-OVM (3 μm)

Employs a 3 μm packing material for higher peak resolution and theoretical plate numbers. Enables significant reductions in analysis times while maintaining high theoretical plate numbers. ULTRON-ES-OVM (3 μm) can be used in LC/MS systems.

● ULTRON ES-OVM-C

Clopidogrel bisulfate evaluation conditions based on USP standards employed for shipping inspections. (Performance reports included with columns.)

● ULTRON ES-OVM-E

Escitalopram oxalate evaluation conditions based on USP standards employed for shipping inspections. (Performance reports included with columns.)

※ Please do not hesitate to contact us for the other dimensions.

Please feel free to contact us with questions related to analyses. Column screening services are also available.



Please be aware that specifications and prices are subject to change without prior notification.