

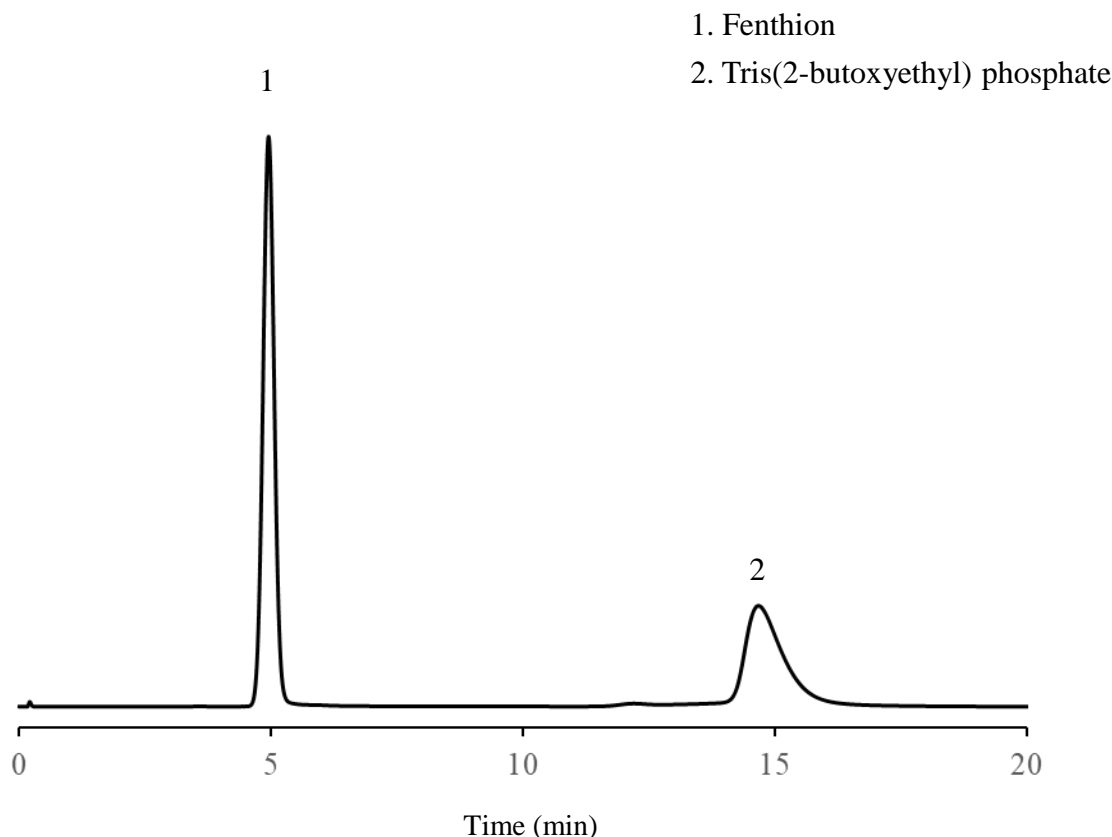
<h1>SHINWA EXPRESS</h1>	<i>Application</i>	VOL. 182
-------------------------	--------------------	----------

Analysis of Fenthion using Shinwasorb

~ Assay ~

Shown below is an analysis of fenthion performed using a column packed with a Shinwasorb packing material in accordance with the Pesticide guidelines.

Diethyleneglycol Succinate (DEGS) 1% Shinwasorb-S 80/100



Selection of column

Column performance: The resolution between fenthion and tris(2-butoxyethyl) phosphate is 11.0.
(Fenthion and tris(2-butoxyethyl) phosphate are eluted in this order with the resolution between these peaks being not less than 3.0.)

Column:	1.0 m x 3.0 mm I.D. Glass	Sample volume:	2.0 μ L
Sample:	Fenthion, Tris(2-butoxyethyl) phosphate in acetone	Detector:	FPD 230°C
Column temp.:	195°C	Injection port temp.:	230°C
Carrier gas:	47 mL/min N ₂ (Adjusted so that the retention time of fenthion is about 5 minutes.)		



SHINWA CHEMICAL INDUSTRIES LTD.

50-2 Kagekatsu-cho, Fushimi-ku
Kyoto 612-8307 Japan
TEL: +81-75-621-2360 FAX: +81-75-602-2660
E-mail: info@shinwa-cpc.co.jp
Website: <https://shinwa-cpc.co.jp/en/>