

SHINWA EXPRESS *Application*

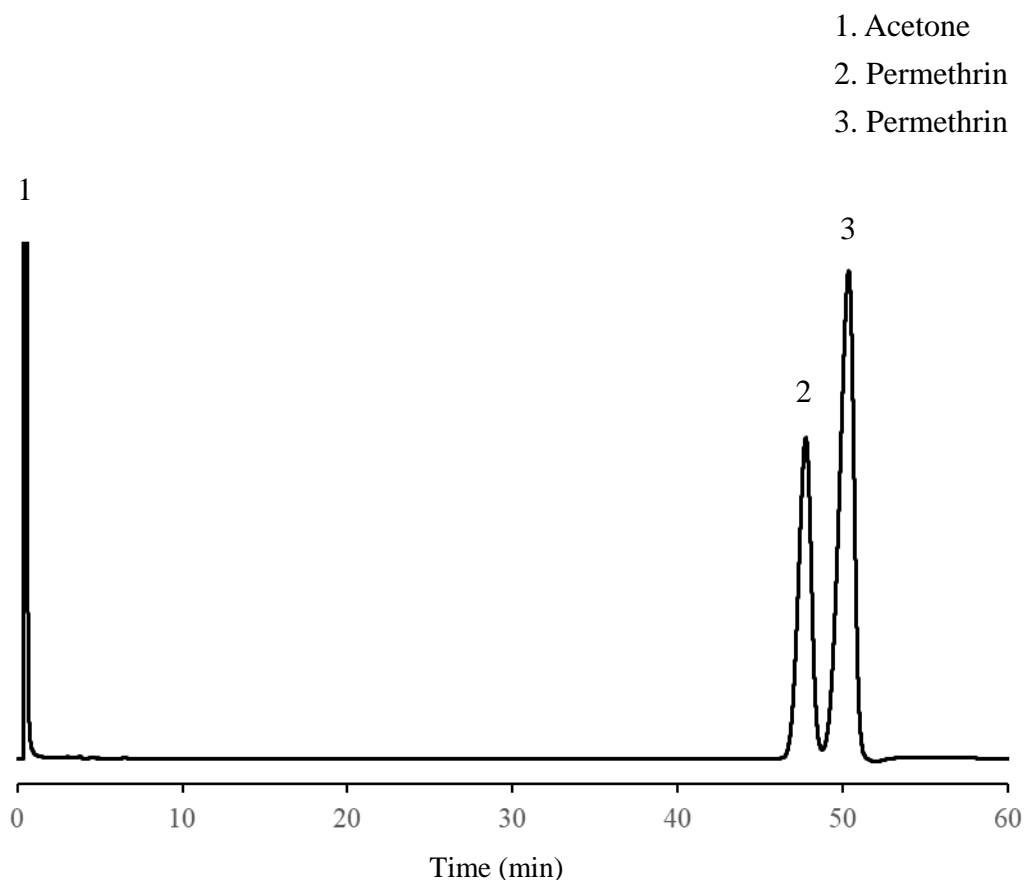
VOL. 184

Analysis of Permethrin using Shinwasorb

~ Purity test ~

Shown below is an analysis of permethrin performed using a column packed with a Shinwasorb packing material in accordance with the Pesticide guidelines.

Polyethyleneglycol 20M (PEG20M) 1% Shinwasorb-S 80/100



Selection of column

Column performance: The resolution between 2.permethrin and 3.permethrin is 1.64.

(The resolution between the peaks of 2.permethrin and 3.permethrin is being not less than 1.2.)

Column: 1.0 m x 3.0 mm I.D. Glass

Sample volume: 1.0 μ L

Sample: Permethrin in acetone

Detector: FID 250°C

Column temp.: 50-230°C (program rate 5°C/min)

Injection port temp.: 250°C

Carrier gas: 50 mL/min N₂ (Adjusted so that the retention time of permethrin is about 40-50 minutes.)



SHINWA CHEMICAL INDUSTRIES LTD.

50-2 Kagekatsu-cho, Fushimi-ku
Kyoto 612-8307 Japan
TEL: +81-75-621-2360 FAX: +81-75-602-2660
E-mail: info@shinwa-cpc.co.jp
Website: <https://shinwa-cpc.co.jp/en/>