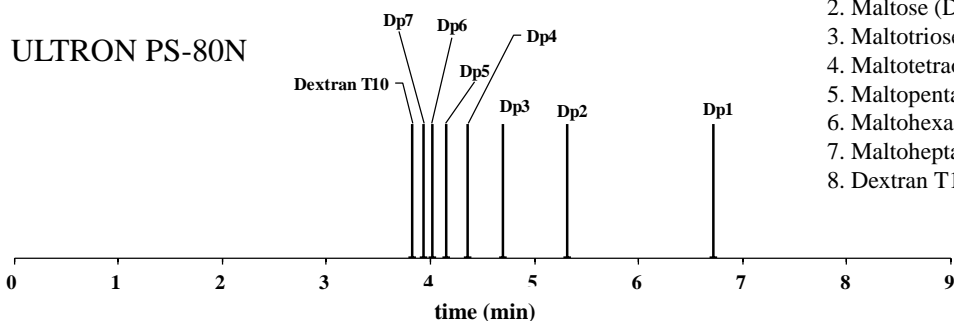


# SHINWA EXPRESS *Application*

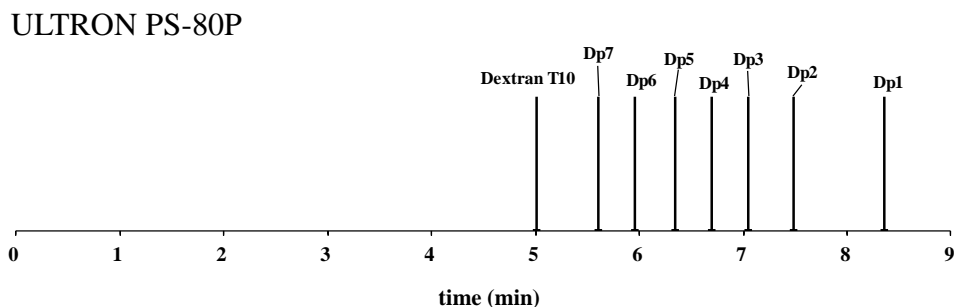
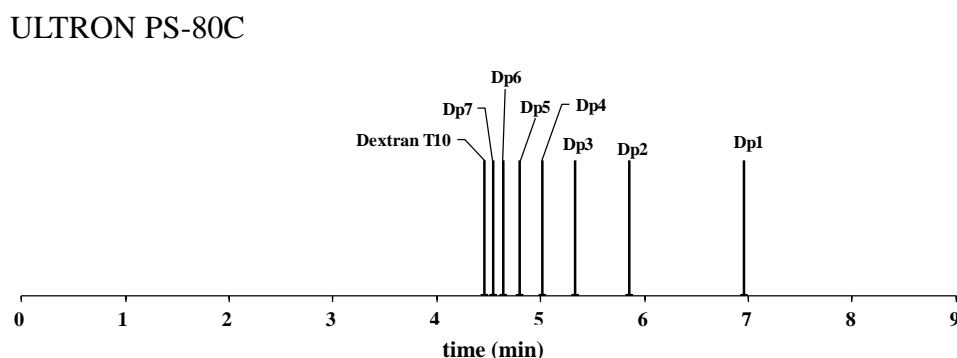
VOL. 189

## Analysis of Maltooligosaccharide using the ULTRON PS-80 series

Elution position of maltooligosaccharide



1. Glucose (Dp1)
2. Maltose (Dp2)
3. Maltotriose (Dp3)
4. Maltotetraose (Dp4)
5. Maltopentaose (Dp5)
6. Maltohexaose (Dp6)
7. Maltoheptaose (Dp7)
8. Dextran T10



Column: ULTRON PS-80N, 80C, 80P (10  $\mu$ m)  
 Column size: 300 mL x 8.0 mm I.D.  
 Mobile phase : H<sub>2</sub>O  
 Flow rate: 1.0 mL/min

Column temp.: 80°C  
 Detection: RID  
 Injection vol.: 20  $\mu$ L



SHINWA CHEMICAL INDUSTRIES LTD.

50-2 Kagekatsu-cho, Fushimi-ku  
 Kyoto 612-8307 Japan  
 TEL: +81-75-621-2360 FAX: +81-75-602-2660  
 E-mail: info@shinwa-cpc.co.jp  
 Website: <https://shinwa-cpc.co.jp/en/>

● Features of the ULTRON PS-80 series (PS-80N(Na type), PS-80C(Ca type), PS-80P(Pb type))

1. The ULTRON PS series are HPLC columns packed with sulfonic acid type polystyrene cation exchange resin for sugar and sugar alcohol analysis.
2. PS-80 series are effective for quantity analysis because saccharides are not adsorbed on the matrix.
3. PS-80 series use in aqueous mobile phase.
4. PS-80 series are durable because of the use of mechanical strong polymer gel.

■ Analytical column specifications ■

ULTRON PS-80H / PS-80N / PS-80C / PS-80P

Product name	Particle size (μm)	Column dimensions Length x I.D. (mm)
ULTRON PS-80H	10	300×8.0
		250×2.0
ULTRON PS-80H.G		50×8.0
ULTRON PS-80N		300×8.0
ULTRON PS-80N.L		500×8.0
ULTRON PS-80N.G		50×8.0
ULTRON PS-80C		300×8.0
ULTRON PS-80C.G		50×8.0
ULTRON PS-80P		300×8.0
ULTRON PS-80P.G		50×8.0



※ Please do not hesitate to contact us for the other dimensions.  
Please feel free to contact us with questions related to analyses.  
Column screening services are also available.

Please be aware that specifications and prices are subject to change without prior notification.