

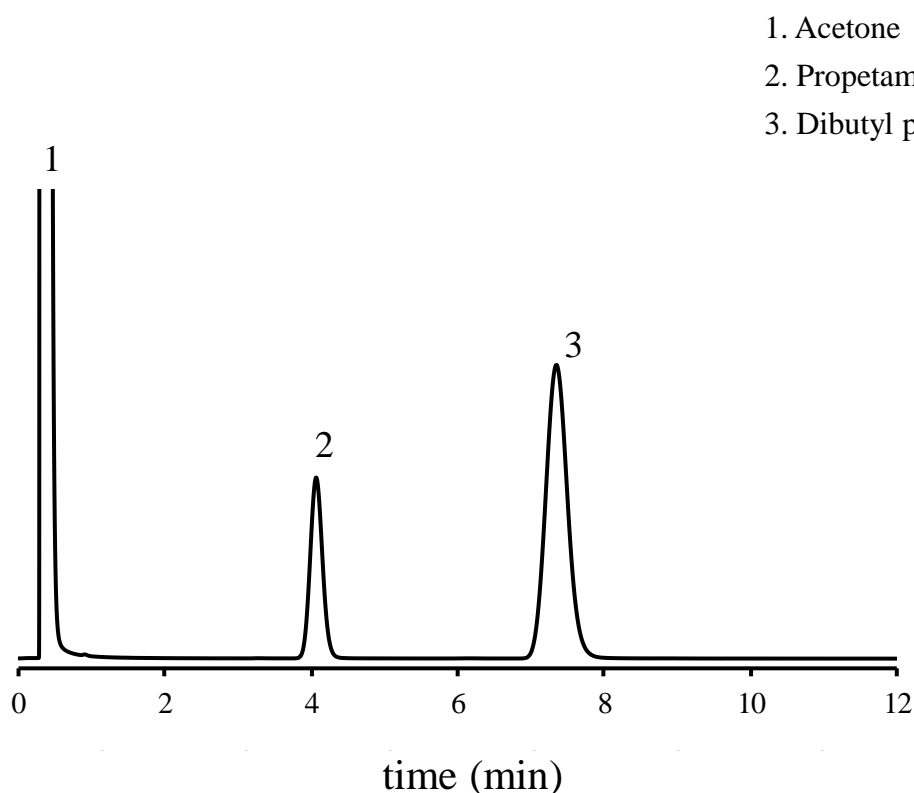
# SHINWA EXPRESS *Application*

VOL. 192

## Analysis of Propetamphos using Shinwasorb

~Assay~

Shown below is an analysis of propetamphos performed using a column packed with a Shinwasorb packing material in accordance with the Pesticide guidelines.



### Selection of column

Column performance : Separation 7.7

(Performance standard is elution of propetanphos and dibutyl phthalate in that order, with a separation of 5.0 or more. )

Column: Silicone OV-17 1.5% Shinwasorb-S 80/100  
1.5 m x 3.0 mm I.D. Glass

Column temp.: 190°C

Injection port temp.: 250°C

Detector: FID 250°C

Carrier gas: 60 mL/min N<sub>2</sub>

(Propetamphos retention time adjusted to approximately 4 minutes)

Sample vol.: 2.0 µL



SHINWA CHEMICAL INDUSTRIES LTD.

50-2 Kagekatsu-cho, Fushimi-ku  
Kyoto 612-8307 Japan  
TEL: +81-75-621-2360 FAX: +81-75-602-2660  
E-mail: info@shinwa-cpc.co.jp  
Website: <https://shinwa-cpc.co.jp/en/>