

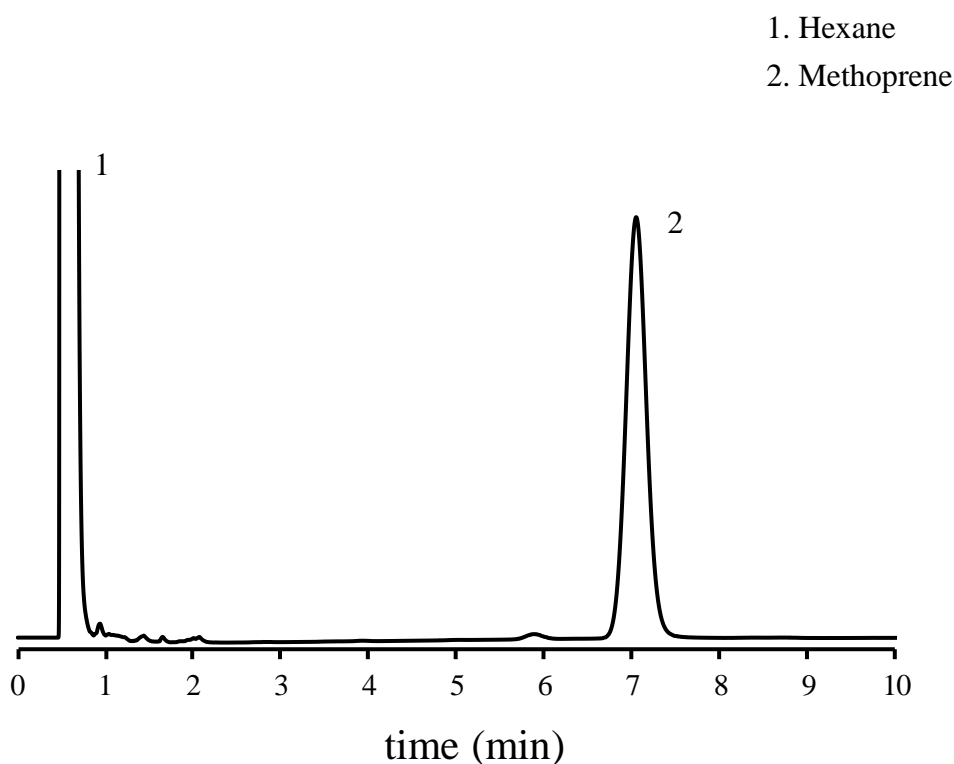
SHINWA EXPRESS *Application*

VOL. 196

Analysis of Methoprene using Shinwasorb

~Purity test~

Shown below is an analysis of methoprene performed using a column packed with a Shinwasorb packing material in accordance with the Pesticide guidelines.



Selection of column

Column performance : Separation 2.9

(Performance standard is a peak of Methoprene and a peak with a retention time ratio to Methoprene of approximately 0.82 and a separation of 2.4 or more.)

Column: Silicone OV-1 1.5% Shinwasorb-S 80/100
2.0 m x 3.0 mm I.D. Glass

Column temp.: 200°C

Injection port temp.: 250°C

Detector: FID 250°C

Carrier gas: 48 mL/min N₂

(Methoprene retention time adjusted to approximately 7 minutes.)

Sample vol.: 2.0 µL



SHINWA CHEMICAL INDUSTRIES LTD.

50-2 Kagekatsu-cho, Fushimi-ku
Kyoto 612-8307 Japan
TEL: +81-75-621-2360 FAX: +81-75-602-2660
E-mail: info@shinwa-cpc.co.jp
Website: <https://shinwa-cpc.co.jp/en/>