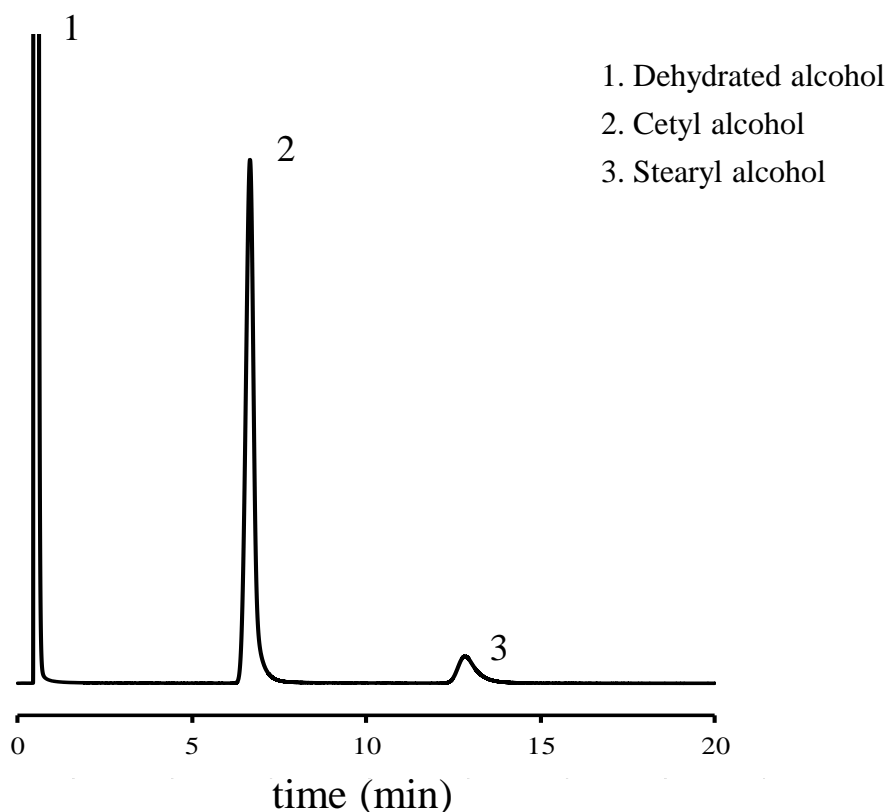


<h1>SHINWA EXPRESS</h1>	<i>Application</i>	VOL. 197
-------------------------	--------------------	----------

Analysis of Cetyl alcohol using Shinwasorb

~system conformance test~

Shown below is an analysis of cetyl alcohol performed using a column packed with a Shinwasorb packing material in accordance with column selection criteria for "USP Cetyl Alcohol".



Selection of column

Column performance : Separation 9.18, relative standard deviation of peak area ratio 0.37.

(Performance standard is a separation of 4 or better for Cetyl alcohol and Stearyl alcohol, and a relative standard deviation of the peak area ratio of Cetyl alcohol and Stearyl alcohol of 1.5% or less.)

Column: Silicone OV-1 5% Shinwasorb-S 80/100 mesh
2.0 m x 3.0 mm I.D. Glass
Column temp.: 205°C
Injection port temp.: 275°C

Detector: FID 250°C
Carrier gas: 50 mL/min He
Sample vol.: 2.0 µL



SHINWA CHEMICAL INDUSTRIES LTD.

50-2 Kagekatsu-cho, Fushimi-ku
Kyoto 612-8307 Japan
TEL: +81-75-621-2360 FAX: +81-75-602-2660
E-mail: info@shinwa-cpc.co.jp
Website: <https://shinwa-cpc.co.jp/en/>