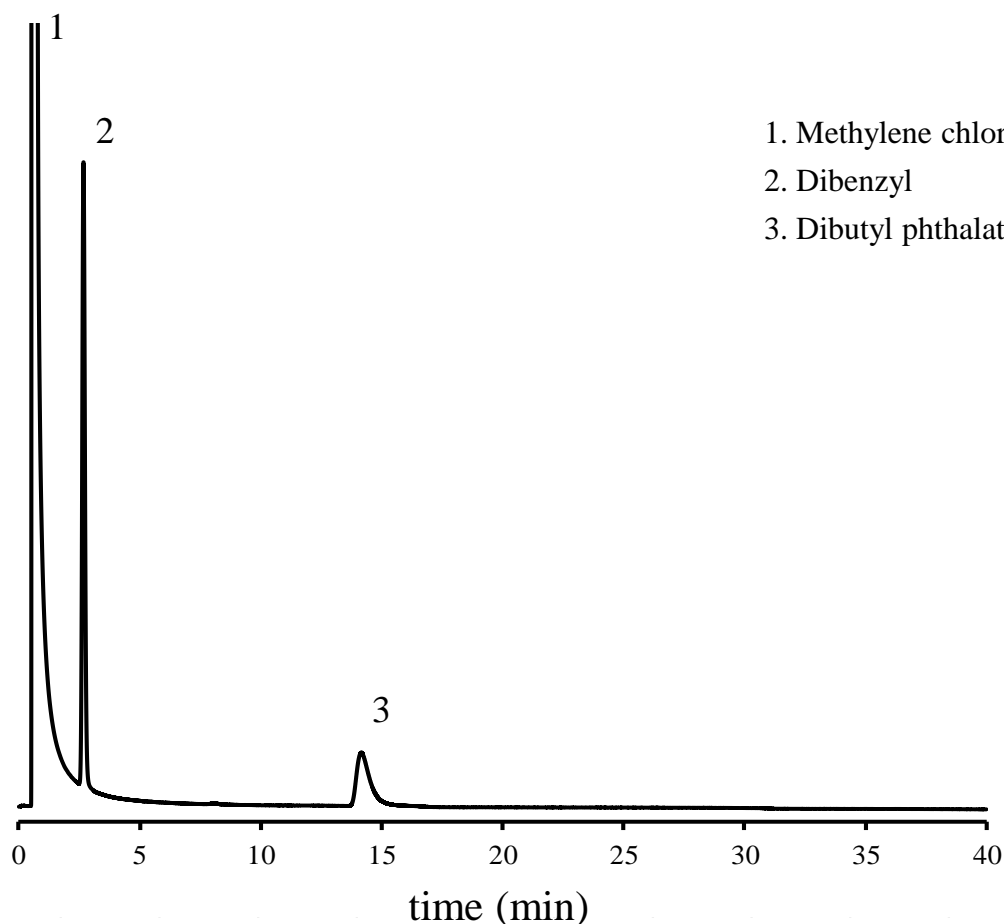


<h1>SHINWA EXPRESS</h1>	<i>Application</i>	VOL. 198
-------------------------	--------------------	----------

## Analysis of Dibutyl phthalate using Shinwasorb

~system conformance test~

Shown below is an analysis of dibutyl phthalate performed using a column packed with a Shinwasorb packing material in accordance with column selection criteria for "USP Dibutyl phthalate".



### Selection of column

Column performance : Separation 19.6.

(Performance standard is a separation of 12 or better for Dibenzyl and Dibutyl phthalate.)

Column: Silicone OV-17 1.5% Shinwasorb-S 80/100  
1.5 m x 4.0 mm I.D. Glass  
Column temp.: 190°C  
Injection port temp.: 225°C

Detector: FID 225°C  
Carrier gas: 30 mL/min N<sub>2</sub>  
Sample vol.: 1.0 µL



**SHINWA CHEMICAL INDUSTRIES LTD.**

50-2 Kagekatsu-cho, Fushimi-ku  
Kyoto 612-8307 Japan  
TEL: +81-75-621-2360 FAX: +81-75-602-2660  
E-mail: info@shinwa-cpc.co.jp  
Website: <https://shinwa-cpc.co.jp/en/>