

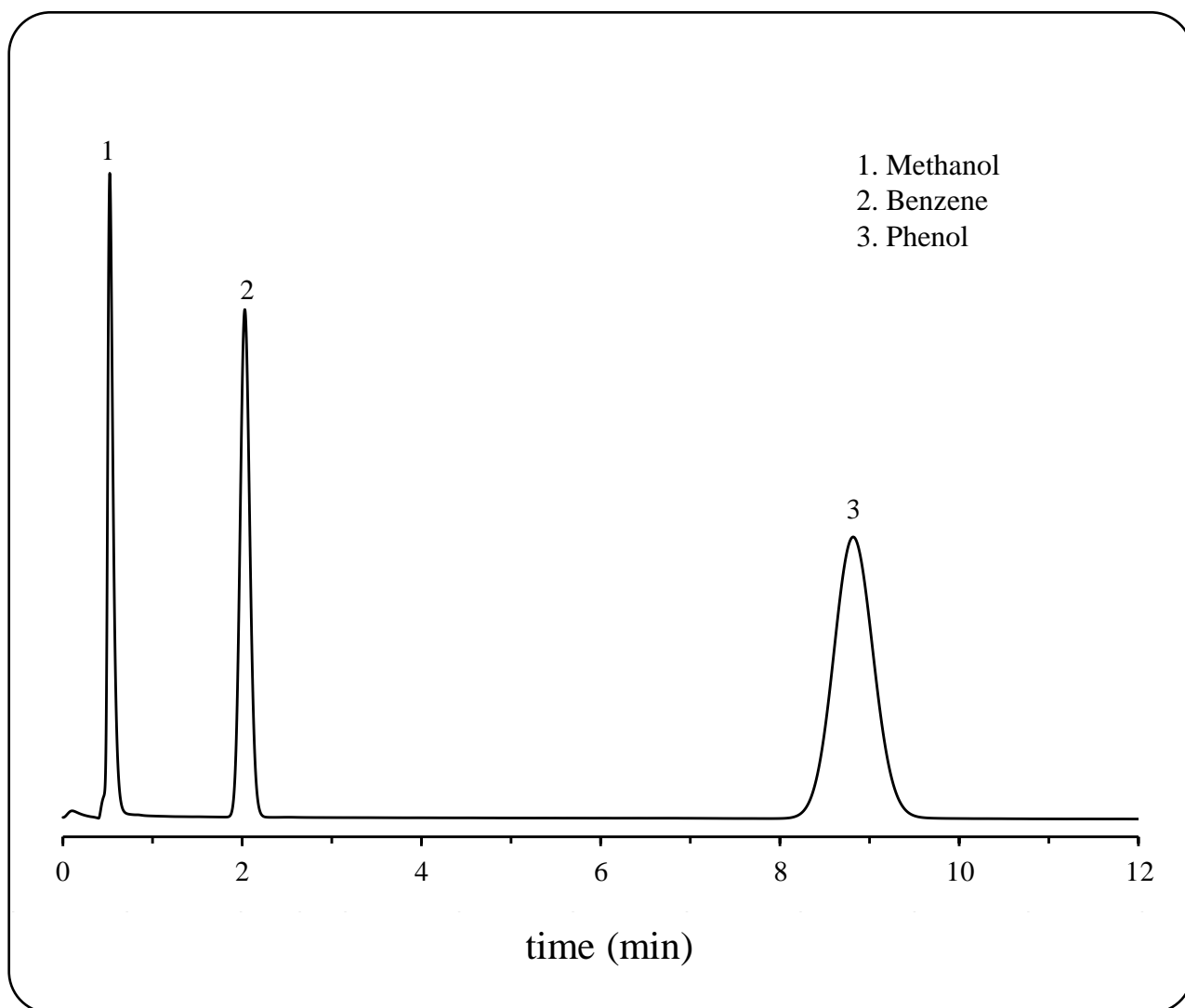
SHINWA EXPRESS

Application

VOL. 200

Constant temperature analysis of Methanol, Benzene and Phenol in water using Sunpak-H

Sunpak-H is a styrene-divinylbenzene copolymer packing material. While a distributant column using liquid phase require temperature rise analysis, Sunpak-H allows a constant temperature analysis.



Column: Sunpak-H 60/80 mesh 2.0 m x 3.0 mm I.D. Glass

Detector: FID 230°C

Column temp.: 200°C

Carrier gas: 50 mL/min N₂

Injection port temp.: 230°C

Sample vol.: 1.0 µL

**SHINWA CHEMICAL INDUSTRIES LTD.**

50-2 Kagekatsu-cho, Fushimi-ku
Kyoto 612-8307 Japan
TEL: +81-75-621-2360 FAX: +81-75-602-2660
E-mail: info@shinwa-cpc.co.jp
Website: <https://shinwa-cpc.co.jp/en/>