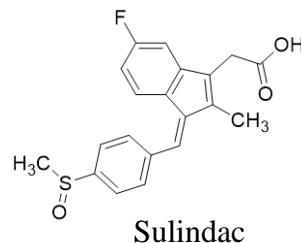
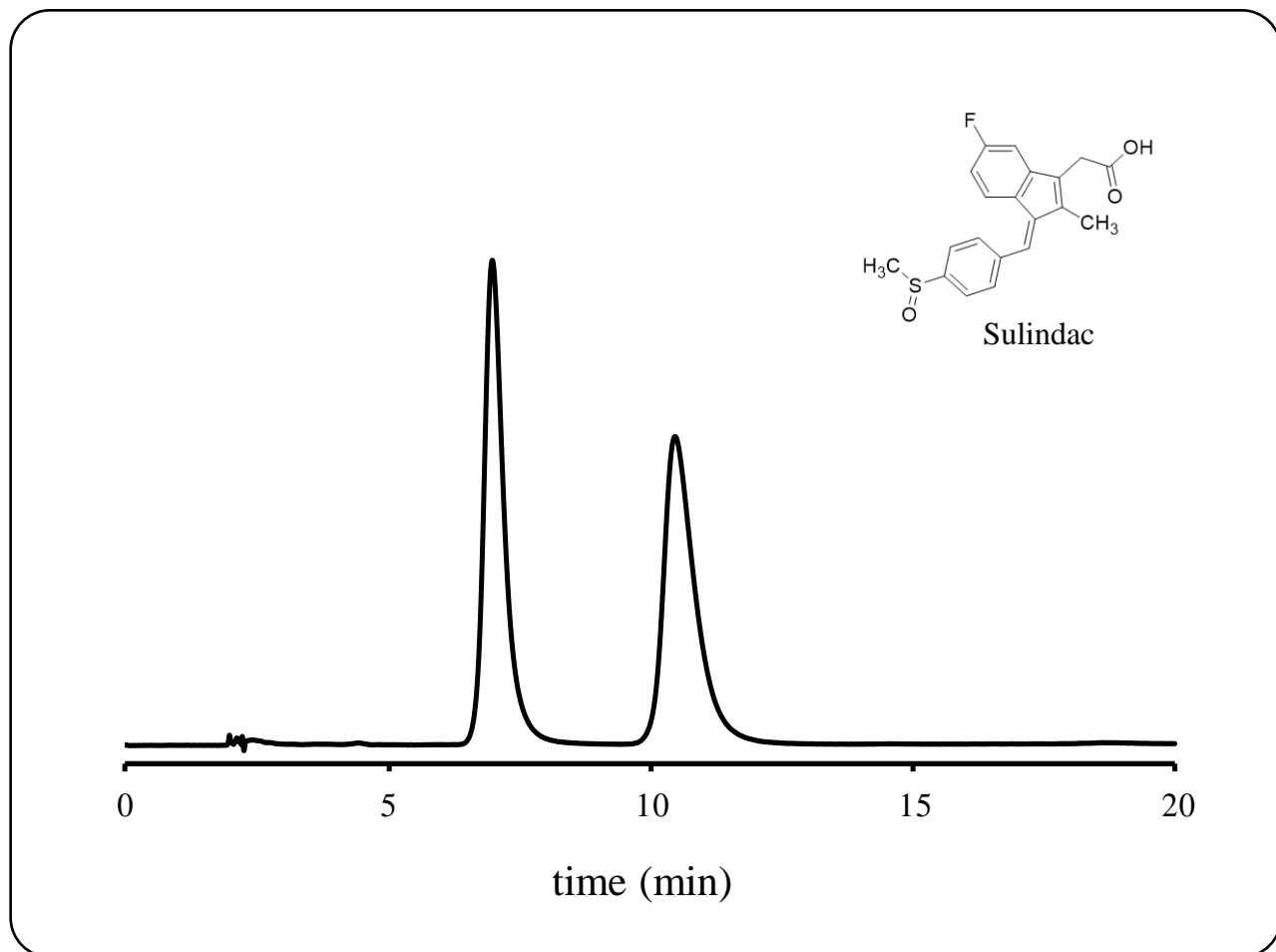


<h1>SHINWA EXPRESS</h1>	<i>Application</i>	VOL. 201
-------------------------	--------------------	----------

## Analysis of Sulindac using the ULTRON ES-BSA-2



Column: ULTRON ES-BSA-2 (7  $\mu$ m)  
 Column size: 150 mmL x 4.0 mm I.D.  
 Mobile phase: Solution C/1-propanol = 92/8  
 Solution A: 50 mM  $\text{Na}_2\text{HPO}_4$   
 Solution B: 50 mM  $\text{NaH}_2\text{PO}_4$   
 Solution C: Solution A and Solution B(5:6).  
 Adjust with 2N sodium hydroxide to a pH of 6.9.

Flow rate: 0.75 mL/min  
 Column temp.: 25°C  
 Detection: UV-254 nm  
 Sample: 200 ppm in 1-propanol  
 Injection vol.: 2  $\mu$ L

### ● Features of the ULTRON ES-BSA-2

1. Employs BSA, which is a bovine serum albumin as the stationary phase.
2. Effective for the enantiomer separation of acidic compounds such as allylpropionic acid drugs.
3. No sample preparation is required for chiral separation.
4. Can be used for reversed-phase analyses.
5. Suitable for trace analyses.
6. Corresponded to L75

## ■ Analytical column specifications ■

### ULTRON ES-BSA-2

Product name	Particle size (μm)	Column dimensions Length x I.D. (mm)
ULTRON ES-BSA-2	7	150×4.0
		150×4.6
ULTRON ES-BSA-2.G		10×4.0
ULTRON ES-BSA-2.G with Coupler		10×4.0

### ULTRON ES-PEPSIN

Product name	Particle size (μm)	Column dimensions Length x I.D. (mm)
ULTRON ES-PEPSIN	5	150×4.6
ULTRON ES-PEPSIN.G		10×4.0

### ULTRON ES-OVM

Product name	Particle size (μm)	Column dimensions Length x I.D. (mm)
ULTRON ES-OVM	3	50×2.1
		50×3.0
		50×4.6
		100×2.1
		100×3.0
		100×4.6
		150×2.1
		150×3.0
		150×4.6
		200×2.1
		200×4.6
		250×2.1
		250×4.6
		ULTRON ES-OVM-C
150×4.6		
150×6.0		
150×4.6		
ULTRON ES-OVM-E	10	150×4.6
ULTRON ES-OVM.G		10×4.0
ULTRON ES-OVM.G with Coupler		10×4.0
ULTRON ES-OVM	10	250×4.6
ULTRON ES-OVM Prep		250×20.0
ULTRON ES-OVM Prep.G		15×8.0
ULTRON ES-OVM (Two Guard Cartridges )	3	5×2.0
	5	5×2.0
		10×4.6
Holder for Guard Cartridge (with Coupler)	-	For 5×2.0 mm column
		For 10×4.6 mm column



※ Please do not hesitate to contact us for the other dimensions. Please feel free to contact us with questions related to analyses. Column screening services are also available.

Please be aware that specifications and prices are subject to change without prior notification.