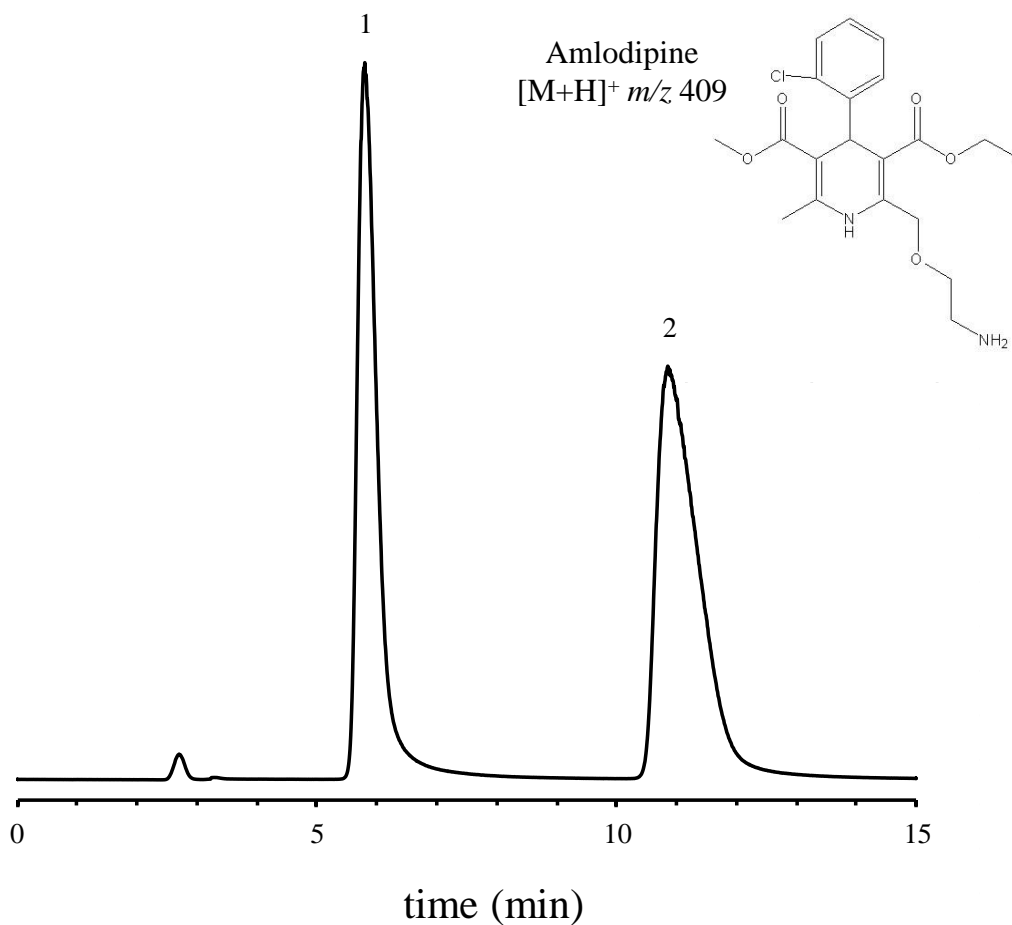


# SHINWA EXPRESS

Application

VOL. 203

## Analysis of Amlodipine using the ULTRON ES-OVM (Part 3)



Column: ULTRON ES-OVM (5 μm)  
 Column size: 150 mmL x 2.0 mm I.D.  
 Mobile phase: 20 mM CH<sub>3</sub>CO<sub>2</sub>NH<sub>4</sub> (pH 6.8)/CH<sub>3</sub>CN = 80/20  
 Flow rate: 0.2 mL/min

Column temp.: 25°C  
 Detection: MS (ESI, SIM, positive)  
 Sample: 400 ppm in 50% acetonitrile  
 Injection vol.: 0.4 μL

### ● Features of the ULTRON ES-OVM

1. Particularly effective for separation of chiral compounds.
2. Employs a highly denaturation resistant protein ligand\* (ovomuroid) as stationary phase.
3. Displays a wide range of chiral recognition.
4. No sample pretreatment required for chiral separations. (Blood plasma samples can be analyzed without pretreatment.)
5. Can be used for reversed-phase analyses.
6. Trace analyses possible (several nanograms).

\*Ligand: A substance that binds selectively with a specific receptor.



SHINWA CHEMICAL INDUSTRIES LTD.

50-2 Kagekatsu-cho, Fushimi-ku  
 Kyoto 612-8307 Japan  
 TEL: +81-75-621-2360 FAX: +81-75-602-2660  
 E-mail: info@shinwa-cpc.co.jp  
 Website: <https://shinwa-cpc.co.jp/en/>

## ■ Analytical column specifications ■

### ULTRON ES-OVM

Product name	Particle size (μm)	Column dimensions Length x I.D. (mm)
ULTRON ES-OVM	3	50×2.1
		50×3.0
		50×4.6
		100×2.1
		100×3.0
		100×4.6
		150×2.1
		150×3.0
		150×4.6
		200×2.1
		200×4.6
		250×2.1
		250×4.6
		ULTRON ES-OVM-C
ULTRON ES-OVM-E	150×4.6	
ULTRON ES-OVM.G	150×6.0	
ULTRON ES-OVM.G with Coupler	150×4.6	
ULTRON ES-OVM	150×4.6	
ULTRON ES-OVM Prep	10	10×4.0
ULTRON ES-OVM.G with Coupler		10×4.0
ULTRON ES-OVM		250×4.6
ULTRON ES-OVM Prep	10	250×20.0
ULTRON ES-OVM Prep.G		15×8.0
ULTRON ES-OVM (Two Guard Cartridges )		3
ULTRON ES-OVM (Two Guard Cartridges )	5	5×2.0
		5×2.0
		10×4.6
Holder for Guard Cartridge (with Coupler)	-	For 5×2.0 mm column
		For 10×4.6 mm column

#### ● ULTRON ES-OVM (3 μm)

- Employs a 3 μm packing material for higher peak resolution and theoretical plate numbers.
- Enables significant reductions in analysis times while maintaining high theoretical plate numbers.
- ULTRON-ES-OVM (3 μm) can be used in LC/MS systems.



※ Please do not hesitate to contact us for the other dimensions. Please feel free to contact us with questions related to analyses. Column screening services are also available.

Please be aware that specifications and prices are subject to change without prior notification.