

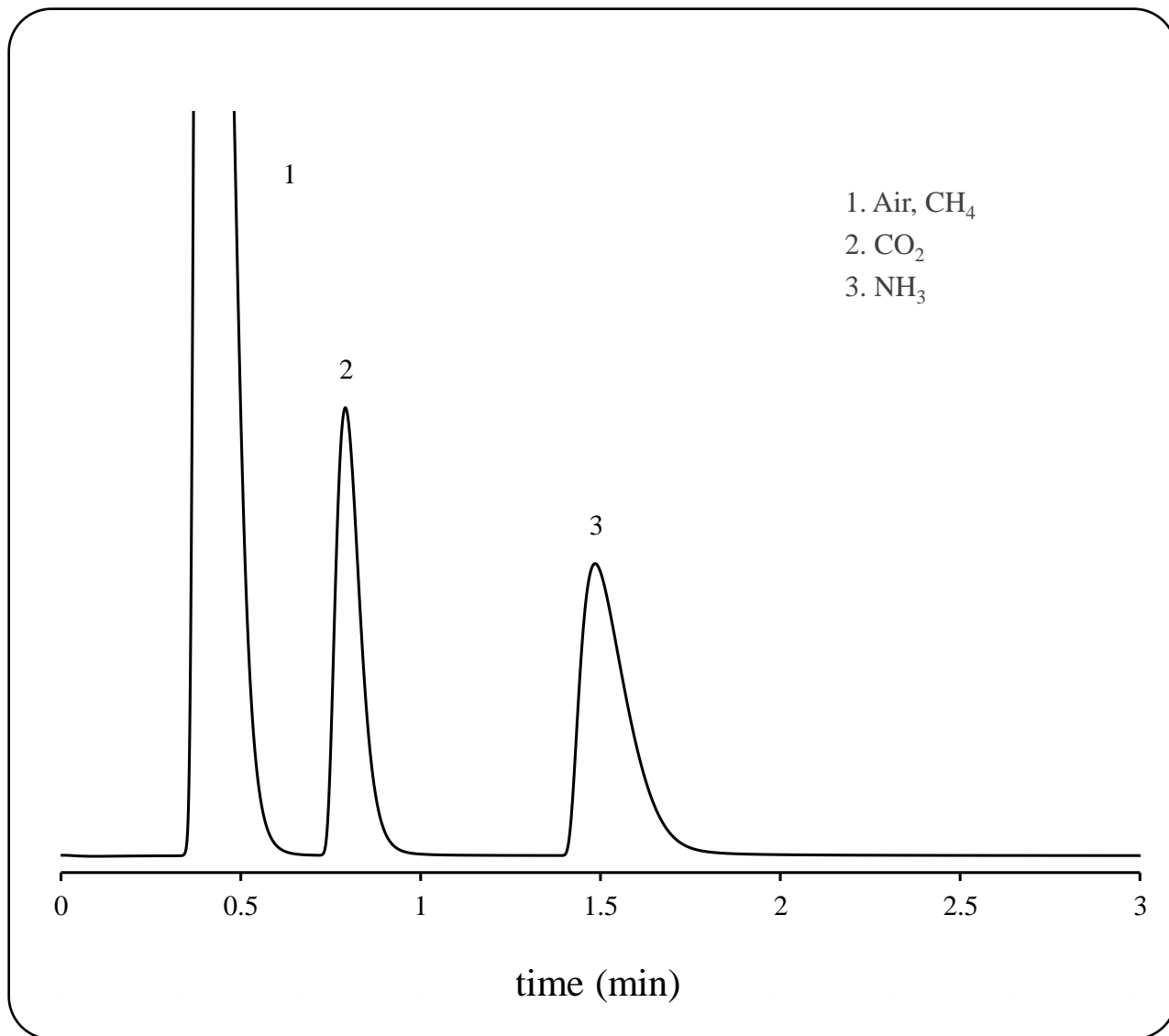
SHINWA EXPRESS

Application

VOL. 206

Analysis of Ammonia water headspace gas using a column for trimethylamine analysis

Shown below is an analysis of mixed sample of ammonia water headspace gas and inorganic gas performed using a column for trimethylamine analysis.



Column: Thermon-3000+KOH 2+2% Sunpak-N 60/100
2.0 m x 3.0 mm I.D. Glass
Column temp.: 80°C
Injection port temp.: 120°C

Detector: TCD 120°C
Carrier gas: 50 mL/min He
Sample vol.: 1.0 mL

**SHINWA CHEMICAL INDUSTRIES LTD.**

50-2 Kagekatsu-cho, Fushimi-ku
Kyoto 612-8307 Japan
TEL: +81-75-621-2360 FAX: +81-75-602-2660
E-mail: info@shinwa-cpc.co.jp
Website: <https://shinwa-cpc.co.jp/en/>