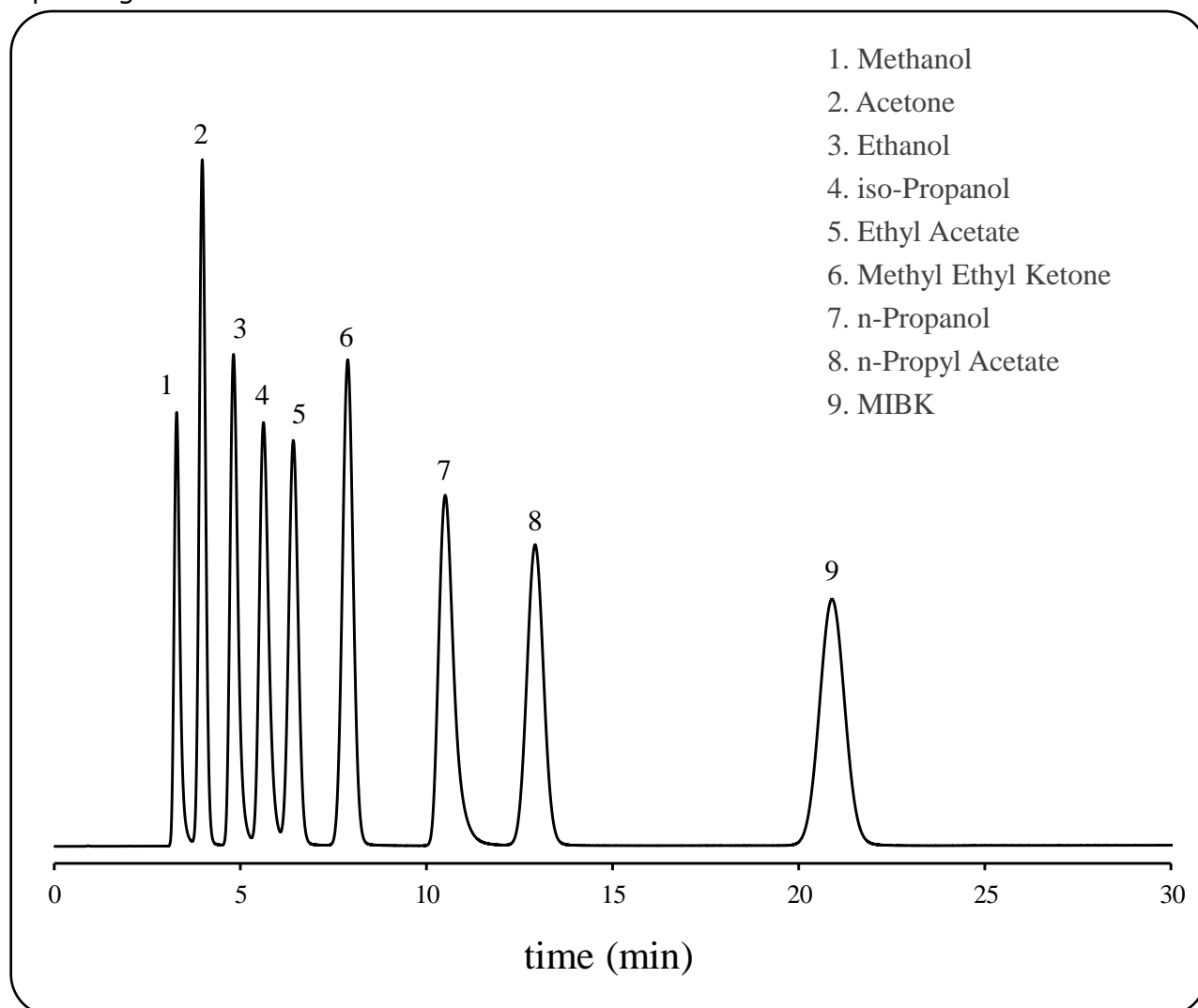


SHINWA EXPRESS *Application*

VOL. 208

Analysis of Organic solvents using a column for substances measured in the working environment analysis

SBS-120, a medium-polar liquid phase, is capable of simultaneous separation of Methanol, Acetone, Ethanol, iso-Propanol, Ethyl Acetate, and Methyl Ethyl Ketone. Shown below is an analysis of organic solvents using a column packed with a SBS-120 packing material.



Column: SBS-120 12% Shincarbon-AII 80/100 mesh
3.0 m x 3.0 mm I.D. Glass

Column temp.: 70°C

Injection port temp.: 200°C

Detector: FID 200°C

Carrier gas: 30 mL/min N₂

Sample vol.: 0.1 µL



SHINWA CHEMICAL INDUSTRIES LTD.

50-2 Kagekatsu-cho, Fushimi-ku
Kyoto 612-8307 Japan
TEL: +81-75-621-2360 FAX: +81-75-602-2660
E-mail: info@shinwa-cpc.co.jp
Website: <https://shinwa-cpc.co.jp/en/>