

SHINWA EXPRESS

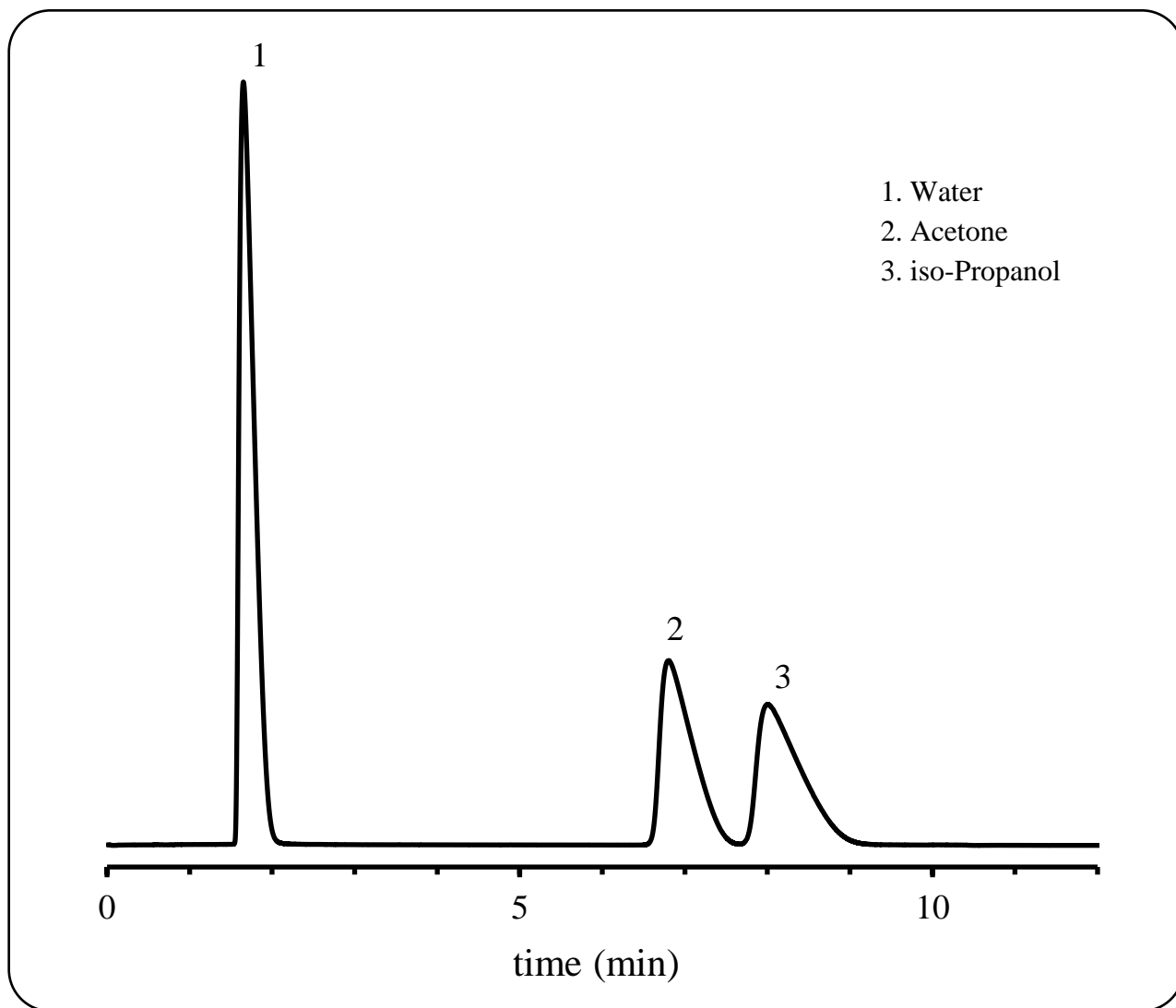
Application

VOL. 229

Analysis of Acetone and iso-Propanol using Sunpak-E

Sunpak-E is a divinylbenzene-ethylvinylbenzene-ethylene glycol dimethacrylate copolymer polymer packing material.

Shown below is an analysis of acetone and iso-propanol in water performed using a column packed with a Sunpak-E packing material.



Column: Sunpak-E 80/100 mesh 2.0 m x 3.0 mm I.D. Glass

Detector: TCD 200°C

Column temp.: 170°C

Carrier gas: 30 mL/min He

Injection port temp.: 200°C

Sample vol.: 1.0 µL



SHINWA CHEMICAL INDUSTRIES LTD.

50-2 Kagekatsu-cho, Fushimi-ku
Kyoto 612-8307 Japan
TEL: +81-75-621-2360 FAX: +81-75-602-2660
E-mail: info@shinwa-cpc.co.jp
Website: <https://shinwa-cpc.co.jp/en/>